



2nd Annual Bull Sale

MONDAY 7TH AUGUST 2023, 1.00PM

ON-PROPERTY & ONLINE

"CAMILAROI WEST", CONDAMINE QLD





FREE
DELIVERY
IN QLD

2nd Annual Bull Sale

MONDAY 7TH AUGUST 2023, 1.00PM

**ON-PROPERTY & ONLINE
"CAMILAROI WEST", CONDAMINE QLD**

INSPECTION FROM 9.30AM

54 | **ANGUS & BRANGUS
2 YEAR OLD BULLS**

31 Angus • 14 Brangus • 9 Ultrablack

Field Day & Bull Inspection

TUESDAY 18TH JULY 2023

Justin & Kate Boshammer

Justin. 0427 655 128 jb@jkcattleco.com

Kate. 0418 528 432 kate@jkcattleco.com

www.jkcattleco.com.au



Welcome

Welcome to our 2nd annual on property bull sale. We are proud to offer this group of bulls, the product of over 20 years of continual herd selection pressure.

This year our sale will be held on Monday 7th August. Historically, we have sold with Justin's father's sale, which for over 20 years has always been the People's Day of the Ekka. Most years, People's Day is the third Wednesday in August, however every third or fourth year the Ekka skips forward a week. With more bull sales now held in August it can cause disruption to which day bull sales fall on, so you may have noticed quite a change this year for particularly Angus bull sales. To overcome this, we have chosen to hold our sale on the Monday of the second week in August (SGA sale on the Tuesday), which shouldn't be impacted by Ekka dates going forward.

This year we engaged Roma Veterinary Clinic for the assessment of the bulls, and many of you would be familiar with their team. Will Nason thoroughly went through all of the sale bulls, to further build confidence in the longevity of our bulls. Sometimes things don't go as planned, and if this is ever the case, we would like to be the first to know if there are any problems.

There is plenty of data provided in our catalogue to assist in your selection of the bulls, most of which is to objectively assure the performance and validity of our program.

Of particular note is "Traits Observed", as not all bull breeders submit raw data to gain EBVs. Under each bull's EBV table you'll notice the Traits Observed – this verifies which traits have had raw data submitted on that bull. Raw data submission further improves EBV accuracy.

Average calving intervals (ACI) and number of calves data has been integral to not only the bulls we sell, but also for our own cow herd efficiency. Like most, we have debt and lease payments, and in most breeding operations roughly 70% of your carrying capacity goes into maintaining the breeder herd. Fast growth and carcase traits are nice to have, but fertile, functional cows are a must. So we hope this information goes a long way to validating the cows behind our bulls.

There are a number of bulls in this catalogue with a number of traits ranking in the top percentiles of their respective breeds, and if we had to single out one bull, it would be lot 9.

Last year was a great year for weaning weights, these sale bulls averaged 345kg at 7-9 months of age, and lot 9 came in at 460kg. By 13 months for 400 day data submission, he weighed 628kg (average was 490kg), scanned 105cm² for EMA, 7.3% IMF, 9mm rump and 6mm rib fat. Breedplan rejected his growth and EMA data as an outlier, but it has since been analysed.

His EBV data is up there, but it will take progeny data to further validate this performance, so it will be interesting as more data comes in. We used him as a yearling over Angus and Brangus cows, and we have collected semen. He has also been nominated for this year's Cohort 14 of the Angus Sire Benchmarking Program. His mother has produced 10 calves for a 360 day average calving interval – exceptional performance.

As always, please feel free to ask any questions, or to inspect the bulls prior to sale day. We are holding an open day on 18th July, and details can be found on our website. Individual photos and videos of the bulls will be available online in late July. Please feel welcome to contact us if we can help in any way, and we're looking forward to catching up with many at the sale!

Justin & Kate Boshammer



We're happy and grateful to share the news that we've recently welcomed a baby boy into our family! Mac Sterling Boshammer made a smooth and timely arrival on his due date, 21st May 2023, weighing a healthy 10lb. We're all going well, and Theo's a proud big brother!



Sale Information

SALE AGENTS

Ray White Rural Dalby

David Felsch: 0488 993 931
david.felsch@raywhite.com

Tim O'Dwyer: 0400 368 874

Keegan de Roo: 0407 701 381

ONLINE BIDDING

Elite Livestock Auctions

Tammie Robinson: 0429 231 830

AUCTIONEER

York Auctioneering

Wayne York: 0458 823 931

INSPECTION

The bulls will be yarded by 9:30am on sale day for your viewing. Prior inspections are welcome by contacting us.

SELLING SYSTEM

The sale of the bulls will be conducted as a live auction, under ALPA auction terms and conditions.

The sale will be interfaced online with Elite Livestock Auctions. Please familiarise yourself with this system prior to the sale if you are planning to bid online. You will need to sign up and complete your buyer registration with Elite Livestock Auctions.

Phone bidding is also available, please contact the agents to arrange this.

All buyers are required to register before the start of the sale. Pre-registration is also available on our website. All bulls sold will be exclusive of GST.

On completion of the sale, successful purchasers are to give written advice to the agents regarding delivery and directions.

INSURANCE

Insurance is available by arrangement on sale day. All bulls are at the buyer's risk from the fall of the hammer, so we strongly recommend insuring all purchases. Ainsley Simpson from Austbrokers Dalby will be present on the day and is also happy to talk to clients prior to, and post auction day, should they have any queries.

Ainsley Simpson: 07 4669 8300 | 0427 574 823

AGENT REBATE

4% commission will be paid to any agent who accompanies a client to the sale, or attends the sale and purchases on a client's behalf, and settles within seven days.

BULL MOVEMENT

No cattle tick clearance required.

We are a J-BAS 7 herd, and our last sample test was June 2021.

DELIVERY

We offer free delivery across Queensland, and we like to personally deliver as many bulls as possible. If you have your own transport, bulls will be available for collection on sale day.

SALE DAY SAFETY

Whilst our focus on selecting for temperament is paramount, please realise that sale day places unusual stresses on sale bulls, and that they may act out of nature.

If you choose to enter sale pens, please be mindful of your safety at all times, and realise you are doing so at your own risk. We ask that anyone under the age of 16, or those with mobility problems do not enter the pens on sale day. We ask that prams are not brought into the sale pen area, and that children are supervised please.

PHONE SERVICE

There is very good mobile coverage at the sale.

DIRECTIONS

"Camilaroi West" is located 5km north west of Condamine, on Henrys Road.

From Condamine, travel 2km towards Miles on the Leichhardt Highway, and turn left onto Henrys Road.

From Miles, travel 30km towards Condamine on the Leichhardt Highway and turn right onto Henrys Road.

The sale complex is 3km along Henrys Road, on the right.

ACCOMMODATION

Rooms have been reserved in Condamine for the nights of Sunday 6th and Monday 7th August. Please quote JK Cattle Company to secure your room. We recommend booking early.

Condamine Bell Hotel: 07 4627 7219

Bullocky's Rest Motel: 0418 961 929

Accommodation is also available in Miles (20 mins).

REFRESHMENTS

Morning tea, lunch and post-sale refreshments will be provided with our compliments.

Guests will have the opportunity to make a cash donation to Zara's Day, a fundraising initiative in memory of our baby daughter Zara. All funds raised support the Steve Waugh Foundation and the Royal Flying Doctor Service QLD Section. For more information please visit www.zarasday.com.au.

Barista coffee will also be available for purchase at the sale from The Baking Asylum.

If you have any dietary requirements, please let us know (gluten free options will be available).

PHOTOS & VIDEOS

We have provided 24 lot photos in the catalogue, and some additional lot photos will be available on our website closer to the sale.

We are planning to provide a video on every bull, particularly to assist those who will be bidding online. These videos will be available closer to the sale, and will be available on Elite Livestock Auctions, and linked on our website.

BRANGUS DNA RESULTS

We have completed gene testing on the Brangus bulls to provide information on their polled status, coat colour and tenderness rating.

Polled Status – All Brangus bulls in the sale have been tested as Homozygous Poll (PcPc).

The term Homozygous Poll indicates that the animal carries two copies of the polled gene and should only produce polled progeny (even if the cow they are mated to is horned).

Coat Colour – 24 of the 25 Brangus bulls have been tested as ED/ED – Homozygous Dominant Black. The remaining bull has been tested as ED/e (Dominant Black/Recessive Red).

Tenderness Ratings – Increase in 'tenderness' is associated with favourable alleles seen within the selected marker panel. Scoring is 1 to 10, where 10 is the most favourable number of alleles present.

DAM FERTILITY DATA

Number of calves and average calving interval (ACI) is provided in this catalogue for every bull's dam. We record all birth weights and birth dates, so have a lot of historical data on our females – if there is additional dam data you would like from a bull's pedigree, please just let us know. The dam data averages across this sale are 4.8 calves for an ACI of 365.7 days.



Health & Fertility

All bulls in the sale will be:

- ✓ Registered with their relevant breed society
- ✓ Breedplan performance recorded with genomics
- ✓ DNA sire verified*
- ✓ Semen motility and morphology tested
- ✓ Independently structurally assessed
- ✓ Blooded for tick fever (3-germ blood)
- ✓ Tested free of pestivirus
- ✓ Vaccinated for 7 in 1, 3 day and vibrio
- ✓ Dam fertility data is provided on all bulls (number of calves and average calving interval)

Semen Testing

All bulls will have undergone and passed a Bull Breeding and Soundness Evaluation (BBSE) adhering to the standards of the Australian Veterinary Association by veterinarian Dr Will Nason, Roma Vet Clinic. All bulls have undergone a morphology assessment by Just Genes.

All bull weights, scrotal measurements, and semen motility and morphology results will be provided on the supplementary sheet on sale day.

Breeding Guarantee

If there is ever a problem with any of our bulls, we would appreciate being the first to know. We are happy to work with our clients to provide guidance and assistance with any issues.

All of our bulls are sold with a 12 month breeding guarantee.

If a bull is found to be infertile or incapable of natural service (which has not occurred due to disease or injury), we will offer to exchange the bull for a replacement bull, or provide a credit to be used at a future JK Cattle Company sale, less the salvage value of the animal.

Any claims should be made in writing within 12 months of the sale date, and accompanied by a certificate from a registered veterinarian stating the nature of infertility.

This guarantee does not include interest, expenses or damages.

Animals injured or lost as a result of accident, negligence or any disease are not covered by this guarantee.

Please check your bulls during breeding season and contact us if you have any concerns.

RayWhite.

Client Focused, Results Driven

Commercial Livestock

Stud Sales

Equine

Rural Property

Sales & Marketing Specialist

Let our people be your advantage

Ray White Rural Dalby

Ph: (07) 4573 7868

166 Drayton St

Dalby QLD 4405

raywhiteruraldalby.com



Introducing JK WAGYU

In mid 2022, we took up a rare opportunity to purchase an established Wagyu seedstock breeding herd, Academy Black Wagyu Stud, from industry stalwart Barbara Roberts-Thomson.

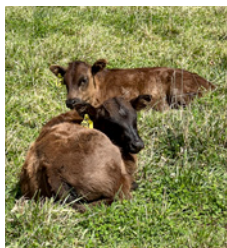
Our relationship with Wagyu began in 2014, when we bought our first Wagyu bulls to use over our commercial cows as a terminal cross, and we have continued this program ever since.

At the time we were expanding, and as a way of mitigating price risk we sought to align ourselves with a premium beef brand that offered forward contracts, preferably family owned and reliant on suppliers. There are many great brands out there, and at the time we went with Stockyard Beef who we continue to supply today.

Throughout this time we have come to appreciate the many attributes that Wagyu offer for both markets and on-farm productivity. They are hardy, highly fertile, and we often retain F1s for our own grass finished meat – there is something about the meat texture right throughout the carcase, as well as the marbling that has you coming back for more. There are some great fundamentals going for the breed, and even just a splash of Wagyu within a breeding herd has a real place in the wider Australian cattle herd.

We never set out to be Wagyu bull breeders, but last year when the opportunity came up to purchase 100 black Wagyu females from Barbara Roberts-Thomson, we went for a look. We were very impressed with the constitution of these cows, and the dedication that has gone into their breeding.

Barbara has had this herd for the past 25 years and has had a strong focus on balanced breeding, with a particular focus on improving milk, growth and structural conformation.



The Academy Wagyu females pictured in their previous Armidale, NSW environment, before relocating to QLD.

Prior to her Wagyu herd she had the Academy Hereford Stud, and in 1995 she won Grand Champion Hereford Bull at Melbourne, Sydney and Brisbane, among many other accolades.

Barbara's focus on balanced breeding aligns really well with our Angus and Brangus herds, and the addition of this herd complements our core business of breeding industry relevant bulls for the premium beef value chains.

We now have bulls available for sale privately, and welcome enquiries.

HOW TO REGISTER with

ELITE LIVESTOCK AUCTIONS



Simply go to www.elitelivestockauctions.com.au using your desktop, laptop, iPad, iPhone or android device.



Click on the "Sign Up" page / link



Create a bidding profile using the bidder registration page.
(You can either register as a livestock agent, company or private buyer)



Agree to the Elite Livestock Auctions Terms & Conditions and the Selling Agents Sale Terms & Conditions as printed in the official Sale Catalogue



Click "Register"



You will then be notified by email that an account has been created.



Once an account has been created you are all "Set to Bid"



Each Auction can then be viewed by clicking "Live Auction" logo on the Elite Livestock Auctions website.



Once you receive email notification that your account has been created please go to the sale you wish to bid at and click "Request to Bid"



The sale will then approve your application to bid and on the sale catalogue you will see "✓ Bid Request Approved"



On Sale day simply login, click "Enter Auction" on the catalogue page and you can start bidding.
(There is no need for software download)



At the completion of the auction, invoicing will be carried out as per your registration details by the Selling Agents.

Having trouble registering and logging in?
Contact Elite Livestock Auctions



1300 259 742

Elite Livestock Auctions ABN 19604 627 607
Level 19, 123 Eagle Street, Brisbane, QLD 4000

P : 1300 259 742 F : 07 3041 5053
www.elitelivestockauctions.com.au



Understanding EBVs



What is the TransTasman Angus Cattle Evaluation?

The TransTasman Angus Cattle Evaluation is the genetic evaluation program adopted by Angus Australia for Angus and Angus influenced beef cattle. The TransTasman Angus Cattle Evaluation uses Best Linear Unbiased Prediction (BLUP) technology to produce Estimated Breeding Values (EBVs) of recorded cattle for a range of important production traits (e.g. weight, carcase, fertility).

The TransTasman Angus Cattle Evaluation is an international genetic evaluation and includes pedigree, performance and genomic information from the Angus Australia and Angus New Zealand databases, along with selected information from the American and Canadian Angus Associations.

The TransTasman Angus Cattle Evaluation utilises a range of genetic evaluation software, including the internationally recognised BLUPF90 family of programs, and BREEDPLAN® beef genetic evaluation analytical software, as developed by the Animal Genetics and Breeding Unit (AGBU), a joint institute of NSW Agriculture and the University of New England, and Meat and Livestock Australia Limited (MLA).

What is an EBV?

An animal's breeding value can be defined as its genetic merit for each trait. While it is not possible to determine an animal's true breeding value, it is possible to estimate it. These estimates of an animal's true breeding value are called EBVs (Estimated Breeding Values).

EBVs are expressed as the difference between an individual animal's genetics and a historical genetic level (i.e. group of animals) within the TACE genetic evaluation, and are reported in the units in which the measurements are taken.

Using EBVs to Compare the Genetics of Two Animals

TACE EBVs can be used to estimate the expected difference in the genetics of two animals, with the expected difference equating to half the difference in the EBVs of the animals, all other things being equal (e.g. they are joined to the same animal/s).

For example, a bull with a 200 Day Growth EBV of +60 would be expected to produce progeny that are, on average, 10 kg heavier at 200 days of age than a bull with a 200 Day Growth EBV of +40 kg (i.e. 20 kg difference between the sire's EBVs, then halved as the sire only contributes half the genetics).

Or similarly, a bull with an IMF EBV of +3.0 would be expected to produce progeny with on average, 1% more intramuscular fat in a 400 kg carcase than a bull with a IMF EBV of +1.0 (i.e. 2% difference between the sire's EBVs, then halved as the sire only contributes half the genetics).

Using EBVs to Benchmark an Animal's Genetics with the Breed

EBVs can also be used to benchmark an animal's genetics relative to the genetics of other Angus or Angus infused animals recorded with Angus Australia.

To benchmark an animal's genetics relative to other Angus animals, an animal's EBV can be compared to the EBV reference tables, which provide:

- the breed average EBV
- the percentile bands table

The current breed average EBV is listed on the bottom of each page in this publication, while the current EBV reference tables are included at the end of these introductory notes.

For easy reference, the percentile band in which an animal's EBV ranks is also published in association with the EBV.

Considering Accuracy

An accuracy value is published with each EBV, and is usually displayed as a percentage value immediately below the EBV.

The accuracy value provides an indication of the reliability of the EBV in estimating the animal's genetics (or true breeding value), and is an indication of the amount of information that has been used in the calculation of the EBV.

EBVs with accuracy values below 50% should be considered as preliminary or of low accuracy, 50-74% as of medium accuracy, 75-90% of medium to high accuracy, and 90% or greater as high accuracy.

Description of TACE EBVs

EBVs are calculated for a range of traits within TACE, covering calving ease, growth, fertility, maternal performance, carcase merit, feed efficiency and structural soundness. A description of each EBV included in this publication is provided on the following page.

For more information visit: www.angusaustralia.com.au

| | | | | |
|-------------------|------------|-----------------|--|--|
| CALVING EASE | CED | % | Genetic differences in the ability of a sire's calves to be born unassisted from 2 year old heifers. | Higher EBVs indicate fewer calving difficulties in 2 year old heifers. |
| | CEM | % | Genetic differences in the ability of a sire's daughters to calve unassisted at 2 years of age. | Higher EBVs indicate fewer calving difficulties in 2 year old heifers. |
| | GL | days | Genetic differences between animals in the length of time from the date of conception to the birth of the calf. | Lower EBVs indicate shorter gestation length. |
| | BW | kg | Genetic differences between animals in calf weight at birth. | Lower EBVs indicate lighter birth weight. |
| GROWTH | 200 DW | kg | Genetic differences between animals in live weight at 200 days of age due to genetics for growth. | Higher EBVs indicate heavier live weight. |
| | 400 DW | kg | Genetic differences between animals in live weight at 400 days of age. | Higher EBVs indicate heavier live weight. |
| | 600 DW | kg | Genetic differences between animals in live weight at 600 days of age. | Higher EBVs indicate heavier live weight. |
| | MCW | kg | Genetic differences between animals in live weight of cows at 5 years of age. | Higher EBVs indicate heavier live weight. |
| | MILK | kg | Genetic differences between animals in live weight at 200 days of age due to the maternal contribution of its dam. | Higher EBVs indicate heavier live weight. |
| FERTILITY | DTC | days | Genetic differences between animals in the time from the start of the joining period (i.e. when the female is introduced to a bull) until subsequent calving. | Lower EBVs indicate shorter time to calving. |
| | SS | cm | Genetic differences between animals in scrotal circumference at 400 days of age. | Higher EBVs indicate larger scrotal circumference. |
| CARCASE | CWT | kg | Genetic differences between animals in hot standard carcase weight at 750 days of age. | Higher EBVs indicate heavier carcase weight. |
| | EMA | cm ² | Genetic differences between animals in eye muscle area at the 12/13th rib site in a 400 kg carcase. | Higher EBVs indicate larger eye muscle area. |
| | RIB | mm | Genetic differences between animals in fat depth at the 12/13th rib site in a 400 kg carcase. | Higher EBVs indicate more fat. |
| | RUMP | mm | Genetic differences between animals in fat depth at the P8 rump site in a 400 kg carcase. | Higher EBVs indicate more fat. |
| | RBV | % | Genetic differences between animals in boned out saleable meat from a 400 kg carcase. | Higher EBVs indicate higher yield. |
| | IMF | % | Genetic differences between animals in intramuscular fat (marbling) at the 12/13th rib site in a 400 kg carcase. | Higher EBVs indicate more intramuscular fat. |
| FEED/TEMP | NFI-F | kg/day | Genetic differences between animals in feed intake at a standard weight and rate of weight gain when animals are in a feedlot finishing phase. | Lower EBVs indicate more feed efficiency. |
| | DOC | % | Genetic differences between animals in temperament. | Higher EBVs indicate better temperament. |
| STRUCTURE | FOOT ANGLE | score | Genetic differences in foot angle (strength of pastern, depth of heel). | Lower EBVs indicate more desirable foot angle. |
| | CLAW SET | score | Genetic differences in claw set structure (shape and evenness of claws). | Lower EBVs indicate more desirable claw structure. |
| SELECTION INDEXES | \$A | | Genetic differences between animals in net profitability per cow joined in a typical commercial self replacing herd using Angus bulls. This selection index is not specific to a particular market end-point, but identifies animals that will improve overall net profitability in the majority of commercial, self replacing, grass and grain finishing beef production systems. | Higher selection indexes indicate greater profitability. |
| | \$A-L | | Genetic differences between animals in net profitability per cow joined in a typical commercial self replacing herd using Angus bulls. This selection index is not specific to a particular market end-point, but identifies animals that will improve overall net profitability in the majority of commercial, self replacing, grass and grain finishing beef production systems. | Higher selection indexes indicate greater profitability. |

Mid June 2023 TransTasman Angus Cattle Evaluation

| CALVEASE | | | | BIRTH | | GROWTH | | | | FERTILITY | | | | CARCASE | | | | OTHER | | | STRUCTURAL | | | INDEXES | | DAM DATA | |
|----------|------|-------|------|-------|------|--------|------|------|------|-----------|------|------|-----|---------|------|------|------|-------|-------|----------|------------|-----------|-------|---------|--------|----------|-----|
| LOT&ID | CED | CEM | GL | BW | 200 | 400 | 600 | MCW | MILK | SS | DTC | CW | EMA | RIB | RUMP | RBV | IMF | NFI-F | DOC | CLAW SET | FOOT SET | LEG ANGLE | \$A | \$A-L | CALVES | ACI | |
| 1 | S637 | +6.2 | +2.8 | -6.2 | +3.4 | +56 | +111 | +152 | +127 | +26 | +3.2 | -3.6 | +89 | +1.9 | -2.1 | -3.0 | +0.0 | +3.0 | -0.47 | +11 | +1.28 | +1.20 | +1.26 | \$202 | \$376 | 5 | 353 |
| 2 | S705 | -12.1 | -5.6 | -2.5 | +8.8 | +58 | +103 | +142 | +148 | +17 | +1.9 | -5.4 | +84 | +3.8 | -2.6 | -3.2 | +0.8 | +1.1 | -0.24 | +16 | +1.12 | +1.08 | +1.14 | \$144 | \$281 | 8 | 375 |
| 3 | S662 | +1.7 | +2.6 | -6.9 | +6.0 | +53 | +91 | +118 | +88 | +21 | +3.8 | -6.5 | +65 | +2.3 | -1.6 | -1.5 | +0.6 | +1.7 | -0.26 | +23 | +0.70 | +0.88 | +0.88 | \$213 | \$352 | 3 | 364 |
| 4 | S703 | +4.9 | -3.1 | -3.6 | +3.9 | +54 | +99 | +139 | +107 | +24 | +1.4 | -1.2 | +86 | +7.9 | -2.7 | -3.3 | +0.6 | +3.1 | -0.42 | +25 | +0.96 | +0.98 | +1.00 | \$193 | \$328 | 2 | 324 |
| 5 | S694 | -2.0 | -1.5 | -1.3 | +6.3 | +60 | +104 | +129 | +130 | +8 | +3.7 | -5.5 | +75 | +7.8 | -2.7 | -3.5 | +1.4 | +1.8 | -0.32 | +20 | +0.88 | +0.88 | +0.82 | \$212 | \$372 | 7 | 372 |
| 6 | S651 | -0.1 | +1.3 | -1.1 | +5.4 | +52 | +90 | +116 | +95 | +20 | +1.6 | -6.6 | +73 | +7.9 | +1.6 | +4.0 | +0.7 | +1.1 | -0.03 | +19 | +0.90 | +0.86 | +0.70 | \$231 | \$373 | 3 | 349 |
| 7 | S700 | +1.0 | +1.6 | -6.0 | +5.0 | +50 | +87 | +109 | +88 | +12 | +1.8 | -4.6 | +75 | +11.1 | -0.7 | -0.6 | +1.3 | +2.7 | 0.1 | +30 | +0.78 | +0.84 | +0.84 | \$227 | \$359 | 4 | 367 |
| 8 | S713 | -6.9 | -0.8 | -3.0 | +8.8 | +66 | +116 | +157 | +158 | +11 | +2.7 | -5.2 | +84 | +3.7 | -0.8 | -1.2 | +0.6 | -0.5 | -0.34 | +12 | +0.60 | +0.80 | +0.86 | \$176 | \$344 | 6 | 363 |
| 9 | S664 | +3.4 | -0.1 | -1.9 | +4.5 | +65 | +111 | +136 | +118 | +14 | +2.9 | -3.1 | +71 | +3.7 | -2.3 | -2.8 | +0.0 | +3.4 | 0.43 | +26 | +0.64 | +0.58 | +0.88 | \$220 | \$378 | 10 | 360 |
| 10 | S649 | +2.1 | -3.1 | -4.0 | +4.0 | +64 | +107 | +138 | +131 | +17 | +2.0 | -3.9 | +79 | +11.4 | -3.6 | -5.6 | +1.1 | +5.2 | 0.2 | +19 | +1.30 | +0.98 | +0.80 | \$245 | \$408 | 2 | 395 |
| 11 | S634 | +4.0 | +4.4 | -5.9 | +4.5 | +62 | +110 | +139 | +111 | +15 | +1.9 | -4.2 | +80 | +14.0 | -1.1 | -3.7 | +1.1 | +4.1 | 0.46 | +18 | +1.06 | +0.82 | +0.84 | \$272 | \$437 | 2 | 381 |
| 12 | S608 | +11.5 | +7.3 | -11.7 | -0.1 | +49 | +96 | +118 | +90 | +22 | +2.8 | -5.1 | +68 | +11.8 | -2.0 | -3.7 | +0.7 | +4.6 | 0.65 | +15 | +1.04 | +1.02 | +1.00 | \$245 | \$405 | 5 | 354 |
| 13 | S611 | +3.2 | +5.7 | -7.3 | +3.6 | +53 | +87 | +103 | +64 | +13 | +2.4 | -7.7 | +65 | +8.0 | +2.5 | +3.2 | -0.2 | +3.2 | 0.35 | +22 | +1.02 | +0.88 | +0.80 | \$266 | \$404 | 2 | 353 |
| 14 | S669 | -1.8 | -2.0 | -4.9 | +8.0 | +61 | +110 | +147 | +151 | +18 | +2.9 | -4.7 | +79 | +2.3 | -3.4 | -4.7 | +1.3 | +0.1 | -0.31 | +22 | +0.62 | +0.86 | +0.82 | \$170 | \$338 | 3 | 356 |

| CALVEASE | | | | BIRTH | | GROWTH | | | | FERTILITY | | | CARCASE | | | | OTHER | | | STRUCTURAL | | | INDEXES | | DAM DATA | | |
|----------|------|------|------|-------|------|--------|------|------|------|-----------|------|------|---------|-------|------|------|-------|-------|-------|------------|------------|-----------|---------|-------|----------|-----|-----|
| LOT & ID | CED | CEM | GL | BW | 200 | 400 | 600 | MCW | MILK | SS | DTC | CW | EMA | RIB | RUMP | RBV | IMF | NFI-F | DOC | CLAW SET | FOOT ANGLE | LEG ANGLE | \$A | \$A-L | CALVES | ACI | |
| 30 | S659 | +8.3 | +0.2 | -5.4 | +2.6 | +41 | +77 | +92 | +74 | +19 | +2.6 | -7.3 | +52 | +3.8 | +3.3 | +3.7 | -0.2 | +2.2 | 0.4 | +20 | +0.90 | +0.96 | +1.02 | \$202 | \$342 | 9 | 365 |
| 31 | S693 | -3.7 | +1.3 | -5.4 | +6.5 | +44 | +76 | +98 | +101 | +13 | +0.9 | -7.3 | +55 | +6.1 | -3.3 | -5.1 | +2.1 | +0.7 | 0.17 | +23 | +0.96 | +0.90 | +0.90 | \$170 | \$296 | 8 | 369 |
| 32 | S602 | +8.3 | +5.8 | -7.9 | +1.6 | +57 | +102 | +136 | +130 | +24 | +1.7 | -4.9 | +85 | +6.2 | +0.1 | -1.7 | +0.1 | +3.3 | -0.23 | +17 | +1.04 | +1.12 | +1.00 | \$220 | \$403 | 2 | 415 |
| 33 | S609 | +6.0 | +7.4 | -9.4 | +3.7 | +56 | +102 | +126 | +118 | +15 | +2.2 | -4.6 | +68 | +5.2 | -2.8 | -4.2 | +0.8 | +1.7 | -0.09 | +22 | +0.68 | +0.94 | +1.02 | \$206 | \$377 | 2 | 367 |
| 34 | S675 | +2.6 | -0.5 | -0.3 | +5.6 | +53 | +97 | +122 | +89 | +24 | +2.1 | -5.8 | +80 | +6.1 | -0.1 | +0.1 | +0.8 | +0.8 | -0.26 | +23 | +0.78 | +0.88 | +1.10 | \$222 | \$360 | 3 | 375 |
| 35 | S696 | +0.6 | +2.1 | -2.9 | +6.1 | +56 | +96 | +118 | +105 | +19 | +1.6 | -4.8 | +77 | +12.4 | -1.1 | -1.6 | +1.8 | +0.6 | 0.36 | +21 | +0.74 | +0.96 | +0.96 | \$224 | \$368 | 4 | 364 |
| 36 | S625 | -4.1 | -2.0 | -2.8 | +5.9 | +55 | +100 | +125 | +92 | +17 | +2.3 | -4.6 | +68 | +2.4 | -0.1 | -0.5 | +0.0 | +2.4 | -0.1 | +21 | +0.80 | +1.02 | +0.88 | \$196 | \$319 | 9 | 362 |
| 37 | S620 | +6.3 | +0.8 | -4.6 | +2.6 | +55 | +91 | +121 | +91 | +27 | +1.8 | -3.8 | +78 | +8.3 | -2.5 | -4.1 | +1.2 | +2.4 | -0.39 | +18 | +0.82 | +1.20 | +1.10 | \$219 | \$356 | 4 | 362 |
| 48 | S730 | -4.8 | -2.4 | -4.0 | +6.7 | +62 | +104 | +125 | +105 | +18 | +2.4 | -4.9 | +76 | +4.9 | -3.9 | -4.3 | +0.7 | +2.0 | -0.8 | +16 | +1.00 | +1.12 | +0.94 | \$203 | \$332 | 7 | 376 |
| 49 | S646 | -0.3 | +2.3 | -2.4 | +4.3 | +45 | +83 | +106 | +85 | +19 | +1.0 | -4.0 | +58 | +4.1 | +2.5 | +3.6 | -0.6 | +2.8 | -0.19 | +16 | +0.98 | +0.94 | +0.92 | \$178 | \$301 | 8 | 367 |
| 50 | S673 | +2.5 | -3.3 | -6.3 | +4.3 | +55 | +92 | +128 | +115 | +15 | +1.2 | -5.2 | +80 | +6.5 | -0.5 | -0.7 | +0.6 | +2.1 | 0.38 | +10 | +0.70 | +0.92 | +1.14 | \$208 | \$358 | 2 | 335 |
| 51 | S706 | +0.1 | -2.9 | -3.3 | +4.5 | +44 | +81 | +100 | +89 | +28 | +2.2 | -4.7 | +61 | +14.4 | -2.9 | -4.8 | +2.2 | +1.4 | 0.32 | +20 | +0.84 | +1.06 | +1.18 | \$186 | \$305 | 7 | 366 |
| 52 | S709 | +1.8 | -1.7 | -2.3 | +4.5 | +47 | +82 | +99 | +78 | +9 | +3.9 | -6.2 | +56 | +6.7 | +4.1 | +4.2 | -0.3 | +2.7 | 0.39 | +23 | +0.92 | +1.16 | +0.92 | \$210 | \$341 | 2 | 400 |
| 53 | S639 | -1.1 | -2.6 | -3.7 | +4.3 | +52 | +84 | +103 | +68 | +18 | +1.8 | -5.0 | +70 | +13.1 | -1.1 | -1.8 | +1.4 | +2.1 | -0.14 | +15 | +1.02 | +1.02 | +0.96 | \$228 | \$337 | 4 | 366 |
| 54 | S727 | -3.9 | -2.1 | -2.1 | +6.6 | +51 | +83 | +99 | +88 | +17 | +1.9 | -5.4 | +60 | +9.0 | -2.2 | -3.4 | +1.6 | +1.0 | -0.29 | +20 | +0.54 | +0.64 | +0.64 | \$186 | \$299 | 4 | 377 |
| 55 | S677 | -7.6 | -1.6 | -0.6 | +8.8 | +58 | +104 | +139 | +140 | +18 | +3.3 | -5.9 | +78 | +7.3 | -2.8 | -3.6 | +1.4 | +0.6 | 0.27 | +22 | +0.64 | +0.86 | +0.84 | \$176 | \$327 | 3 | 374 |
| 56 | S661 | -4.0 | -1.6 | -0.6 | +7.1 | +59 | +99 | +126 | +106 | +14 | +3.2 | -6.3 | +85 | +7.2 | -4.7 | -6.0 | +1.2 | +3.6 | 0.08 | +24 | +0.64 | +0.98 | +1.00 | \$227 | \$365 | 7 | 362 |

| | | | | | | | | | | | | | | | | | | | | | | | | | | | |
|---------------|------|------|------|------|-----|-----|------|------|-----|------|------|-----|-----|------|------|------|------|------|-------|-----|-------|-------|-------|-------|-------|--|--|
| BREED AVERAGE | +2.2 | +2.6 | -4.8 | +4.1 | +50 | +90 | +117 | +100 | +17 | +2.1 | -4.6 | +66 | +66 | +6.3 | +0.0 | -0.3 | +0.5 | +2.2 | +0.19 | +20 | +0.84 | +0.97 | +1.03 | \$197 | \$339 | | |
|---------------|------|------|------|------|-----|-----|------|------|-----|------|------|-----|-----|------|------|------|------|------|-------|-----|-------|-------|-------|-------|-------|--|--|

| | | BIRTH | | | GROWTH | | | FERTILITY | | | | CARCASS | | | | INDEXES | | | DAM DATA | |
|---------------|------------|-------|------|-----|--------|-----|-----|-----------|------|-----|------|---------|------|------|------|---------|-------|-------|----------|-----|
| | | GL | BW | | 200 | 400 | 600 | MCW | MILK | SS | CW | EMA | RIB | RUMP | RFY | IMF | \$EXP | \$DOM | CALVES | ACI |
| 15 | QLL21FS552 | -1.2 | +1.8 | +17 | +36 | +40 | +31 | +1 | +2.0 | +19 | +2.5 | +0.6 | +0.7 | +0.6 | +0.0 | \$33 | \$33 | 4 | 366 | |
| 16 | QLL21RS570 | -0.5 | +4.0 | +22 | +42 | +54 | +47 | +1 | +3.0 | +26 | +4.6 | +0.3 | +0.4 | +0.3 | +1.6 | -0.3 | \$41 | \$40 | 8 | 375 |
| 17 | QLL21RS512 | -0.9 | +0.8 | +17 | +28 | +32 | +31 | +1 | +0.3 | +18 | +1.6 | -0.2 | -0.3 | -0.2 | +0.9 | -0.1 | \$26 | \$25 | 7 | 369 |
| 18 | QLL21FS533 | -1.4 | +1.2 | +19 | +38 | +45 | +38 | +1 | +3.5 | +23 | +3.1 | +0.0 | -0.1 | +0.9 | +0.5 | \$41 | \$45 | 4 | 376 | |
| 19 | QLL21FS582 | -0.4 | +2.4 | +15 | +35 | +42 | +34 | +1 | +2.9 | +21 | +4.0 | +0.5 | +0.5 | +0.5 | +1.0 | +0.4 | \$36 | \$36 | 4 | 383 |
| 20 | QLL21US565 | +0.7 | +3.7 | +17 | +36 | +40 | +41 | -2 | +2.2 | +18 | +2.3 | +2.2 | +2.7 | -0.7 | +0.9 | \$26 | \$27 | 4 | 370 | |
| 21 | QLL21US494 | -2.9 | -0.5 | +12 | +27 | +33 | +29 | +2 | +2.8 | +15 | +1.1 | +0.4 | +0.4 | +0.4 | +0.1 | +0.6 | \$30 | \$37 | 6 | 362 |
| 22 | QLL21FS522 | -1.3 | +0.5 | +12 | +25 | +33 | +26 | +0 | +1.9 | +18 | +3.7 | -0.4 | -0.6 | +1.6 | -0.2 | \$31 | \$33 | 6 | 366 | |
| 23 | QLL21US551 | -0.5 | +1.9 | +14 | +30 | +35 | +39 | +1 | +1.2 | +15 | +0.4 | +1.7 | +2.0 | -1.3 | +1.3 | \$20 | \$25 | 10 | 357 | |
| 24 | QLL21US505 | -1.2 | -0.2 | +10 | +17 | +20 | +15 | -3 | +1.5 | +9 | +0.3 | +0.4 | +0.4 | -0.3 | +0.8 | \$16 | \$22 | 1 | | |
| 25 | QLL21US562 | -1.5 | +1.3 | +18 | +30 | +36 | +36 | -1 | +0.0 | +18 | +1.0 | +0.3 | +0.4 | +0.0 | +0.3 | \$23 | \$24 | 1 | | |
| 26 | QLL21US506 | -0.4 | +3.0 | +15 | +29 | +40 | +33 | +2 | +2.2 | +16 | +2.1 | +0.1 | +0.0 | +0.5 | +0.5 | \$26 | \$27 | 10 | 365 | |
| 28 | QLL21US497 | -1.4 | +3.3 | +26 | +38 | +48 | +45 | +2 | +2.8 | +19 | +0.2 | +0.8 | +0.9 | -0.9 | +1.2 | \$27 | \$33 | 2 | 375 | |
| 29 | QLL21FS523 | -0.5 | +0.7 | +10 | +14 | +21 | +16 | -1 | +1.3 | +11 | +2.3 | +0.3 | +0.4 | +0.9 | -0.1 | \$18 | \$22 | 4 | 381 | |
| 38 | QLL21US592 | -0.8 | +4.1 | +27 | +43 | +53 | +56 | +1 | +2.0 | +22 | +0.9 | -0.3 | -0.4 | +0.2 | +0.2 | \$31 | \$31 | 2 | 347 | |
| 39 | QLL21RS585 | -1.4 | -1.9 | +6 | +13 | +12 | +14 | +2 | -0.8 | +9 | -0.1 | -0.8 | -1.0 | +0.3 | +0.2 | \$12 | \$11 | 11 | 366 | |
| 40 | QLL21RS569 | -2.0 | -2.2 | +4 | +17 | +17 | +14 | +2 | -0.4 | +12 | +1.5 | -0.6 | -0.7 | +0.8 | +0.2 | \$19 | \$19 | 8 | 416 | |
| 41 | QLL21FS573 | -1.4 | +0.2 | +9 | +17 | +20 | +10 | -1 | +0.9 | +10 | +1.8 | -0.2 | -0.2 | +0.8 | +0.2 | \$18 | \$19 | 3 | 374 | |
| 42 | QLL21RS537 | -0.6 | +0.9 | +10 | +22 | +27 | +25 | -2 | +2.5 | +10 | +0.8 | +0.7 | +0.8 | +0.0 | +0.2 | \$22 | \$28 | 4 | 367 | |
| 43 | QLL21US538 | -0.5 | +3.8 | +22 | +29 | +37 | +35 | -2 | -0.1 | +15 | +0.9 | +0.2 | +0.3 | +0.1 | +0.4 | \$16 | \$14 | 2 | 345 | |
| 44 | QLL21RS539 | -1.5 | -4.6 | -7 | -12 | -19 | -24 | -4 | -1.3 | -3 | +1.0 | +1.2 | +1.5 | -0.1 | +0.4 | -\$6 | -\$1 | 2 | 344 | |
| 45 | QLL21FS532 | -0.9 | +3.5 | +22 | +46 | +58 | +49 | +1 | +3.4 | +26 | +4.0 | -0.1 | -0.1 | +1.4 | -0.1 | \$44 | \$45 | 4 | 256 | |
| 46 | QLL21RS590 | -1.1 | -0.1 | +6 | +18 | +22 | +16 | -2 | +1.7 | +10 | +2.0 | +1.6 | +2.0 | +0.0 | +0.5 | \$21 | \$27 | 3 | 386 | |
| BREED AVERAGE | | -0.8 | -0.2 | +11 | +21 | +22 | +20 | -2 | +0.6 | +13 | +1.2 | +0.2 | +0.1 | +0.4 | +0.3 | \$20 | \$22 | | | |

Structural Soundness Scoring

Structural soundness scores for TACE are collected using the Beef Class Structural Assessment System.

Scores are collected for traits related to feet and leg structure using a 1 – 9 scoring system, where:

- A score of 5 is considered ideal. A temperament score of 1 is preferable.
- Scores of 4 and 6 show slight variation from ideal, but this includes most animals. Any animal scoring 4 and 6 would be acceptable in any breeding program.
- Scores of 3 and 7 show greater variation, but would be acceptable in most commercial breeding programs, however seedstock producers should be wary.
- Scores of 2 and 8 are low scoring animals and should be looked at carefully before purchasing.
- Scores of 1 and 9 should be considered culls.

Structural soundness scores for TACE must be collected by an accredited technician. We have used Roger Evans, Bovine Scanning Services (Accreditor Number: 1018).

In this catalogue we have provided the raw data on each bull in this table.

The Angus bulls also have structural EBVs.

| STRUCTURE | | | | |
|-------------|---|---|---|---|
| CLAW | F | 6 | R | 6 |
| ANGLE | F | 6 | R | 6 |
| REAR LEG | S | 5 | H | 5 |
| TEMPERAMENT | 1 | | | |

Front & Rear Feet Claw Set

Front & Rear Feet Angle

Rear Leg Side & Hind View

Docility/Temperament



1

JK CATTLE CO SCOTTSDALE S637^{SV}

Angus

ID. QLL21S637 HBR DOB. 7/8/2021 AMFU,CAFU,DDFU,NHFU DAM DATA. 5 CALVES, 353 DAY ACI

CONNELLY IN SURE 8524*
G A R SURE FIRE^{SV}
CHAIR ROCK 5050 G A R 8086*

KC HAAS GPS*
TEXAS MOUNT K002^{PV}
TEXAS UNDINE Z183^{PV}

SIRE G A R RELIANT^{PV}

DAM JK CATTLE CO FLOWER M609*

B/R DESTINATION 727-928*
G A R DESTINATION N244*
G A R PREDESTINED 3279*

GLENOCH GALLIPOLI G95^{SV}
GLENOCH-JK FLOWER J652^{PV}
GLENOCH FLOWER D226*

| STRUCTURE | | | | |
|-------------|---|---|---|---|
| CLAW | F | 8 | R | 7 |
| ANGLE | F | 6 | R | 6 |
| REAR LEG | S | 7 | H | 6 |
| TEMPERAMENT | | | | 1 |

Mid June 2023 TransTasman Angus Cattle Evaluation

| TACE | CED | CEM | GL | BW | 200 | 400 | 600 | MCW | MILK | DC | SS | DOC |
|------|------|------|------|------|-----|------|------|------|------|------|------|-----|
| EBV | +6.2 | +2.8 | -6.2 | +3.4 | +56 | +111 | +152 | +127 | +26 | -3.6 | +3.2 | +11 |
| RANK | 21% | 52% | 27% | 35% | 22% | 6% | 4% | 13% | 3% | 78% | 14% | 89% |
| ACC | 58% | 46% | 83% | 75% | 74% | 72% | 72% | 69% | 63% | 39% | 75% | 50% |

| | CW | EMA | RIB | RUMP | RBV | IMF | NFI-F | CLAW SET | FOOT ANGLE | LEG ANGLE | \$ABI | \$ABI-L |
|------|-----|------|------|------|------|------|-------|----------|------------|-----------|-------|---------|
| EBV | +89 | +1.9 | -2.1 | -3.0 | +0.0 | +3.0 | -0.47 | +1.28 | +1.20 | +1.26 | \$202 | \$376 |
| RANK | 5% | 93% | 89% | 89% | 77% | 26% | 2% | 99% | 91% | 97% | 48% | 26% |
| ACC | 63% | 63% | 64% | 63% | 58% | 66% | 51% | 74% | 74% | 66% | | |

Traits Observed: GL,CE,BWT,200WT,400WT(x2),SC,Scan(EMA,Rib,Rump,IMF),Structure(Claw Set x 1, Foot Angle x 1),Genomics

S637 offers plenty of length and frame, and is suitable for heifers. A great set of EBVs – he's high ranking for growth, carcass, scrotal, milk and feed efficiency. A really nice bull, with proven fertility in his cow-line. The first few bulls can often be the best value, so don't miss him!

..... \$.....



2

JK CATTLE CO SHINER S705^{PV}

Angus

ID. QLL21S705 HBR DOB. 5/9/2021 AMFU,CAFU,DDFU,NHFU DAM DATA. 8 CALVES, 375 DAY ACI

S A V HERITAGE 6295*
S A V HARVESTOR 0338*
S A V EMBLYNETTE 7749*

TE MANIA AMBASSADOR A134^{SV}
TUWHARETOA REGENT D145^{PV}
LAWSON'S HENRY VIII Y5^{SV}

SIRE SUGARLOAF HARVESTOR N174^{SV}DAM GLENOCH-JK ANN J605^{SV}

SYDGEN C C & 7*
SUGARLOAF CLEO J15^{SV}
SUGARLOAF CLEO D84^{PV}

TE MANIA INFINITY 04 379 AB*
GLENOCH-JK ANN F606^{SV}
GLENOCH ANN C102^{SV}

| STRUCTURE | | | | |
|-------------|---|---|---|---|
| CLAW | F | 7 | R | 6 |
| ANGLE | F | 6 | R | 6 |
| REAR LEG | S | 7 | H | 6 |
| TEMPERAMENT | | | | 1 |

Mid June 2023 TransTasman Angus Cattle Evaluation

| TACE | CED | CEM | GL | BW | 200 | 400 | 600 | MCW | MILK | DC | SS | DOC |
|------|-------|------|------|------|-----|------|------|------|------|------|------|-----|
| EBV | -12.1 | -5.6 | -2.5 | +8.8 | +58 | +103 | +142 | +148 | +17 | -5.4 | +1.9 | +16 |
| RANK | 99% | 97% | 83% | 99% | 16% | 17% | 9% | 3% | 54% | 29% | 56% | 69% |
| ACC | 57% | 48% | 71% | 74% | 73% | 71% | 71% | 68% | 63% | 40% | 74% | 38% |

| | CW | EMA | RIB | RUMP | RBV | IMF | NFI-F | CLAW SET | FOOT ANGLE | LEG ANGLE | \$ABI | \$ABI-L |
|------|-----|------|------|------|------|------|-------|----------|------------|-----------|-------|---------|
| EBV | +84 | +3.8 | -2.6 | -3.2 | +0.8 | +1.1 | -0.24 | +1.12 | +1.08 | +1.14 | \$144 | \$281 |
| RANK | 9% | 79% | 94% | 91% | 28% | 77% | 8% | 92% | 74% | 81% | 92% | 87% |
| ACC | 62% | 61% | 62% | 62% | 56% | 64% | 52% | 74% | 74% | 70% | | |

Traits Observed: CE,BWT,200WT,400WT(x2),SC,Scan(EMA,Rib,Rump,IMF),Structure(Claw Set x 1, Foot Angle x 1),Genomics

A cracking bull, there's plenty of length, depth and width to this fella! His strength of spine, muscle expression, soundness and docility are trademarks of his sire, Harvester. The Ann cow-line has worked very well for us. An early lot to be snapped up!

..... \$.....



3

JK CATTLE CO SCUD MISSILE S662^{SV}

Angus

ID. QLL21S662 HBR DOB. 13/8/2021 AMFU,CAFU,DDFU,NHFU DAM DATA. 3 CALVES, 364 DAY ACI

S A V HERITAGE 6295*

PATHFINDER GENESIS G357^{PV}

S A V HARVESTOR 0338*

PATHFINDER COMPLETE K22^{SV}

S A V EMBLYNETTE 7749*

PATHFINDER EQUATOR H756*

SIRE SUGARLOAF HARVESTOR N174^{SV}

DAM GLENOCH-JK FLOWER P601*

SYDGEN C C & 7*

OUR FARM J244^{PV}SUGARLOAF CLEO J15^{SV}

GLENOCH-JK FLOWER M601*

SUGARLOAF CLEO D84^{PV}GLENOCH-JK FLOWER K617^{SV}

| STRUCTURE | | | | |
|-------------|---|---|---|---|
| CLAW | F | 7 | R | 6 |
| ANGLE | F | 6 | R | 6 |
| REAR LEG | S | 6 | H | 6 |
| TEMPERAMENT | 1 | | | |

Mid June 2023 TransTasman Angus Cattle Evaluation

| TACE | CED | CEM | GL | BW | 200 | 400 | 600 | MCW | MILK | DC | SS | DOC |
|------|------|------|------|------|-----|-----|------|-----|------|------|------|-----|
| EBV | +1.7 | +2.6 | -6.9 | +6.0 | +53 | +91 | +118 | +88 | +21 | -6.5 | +3.8 | +23 |
| RANK | 60% | 55% | 18% | 86% | 36% | 48% | 48% | 69% | 19% | 10% | 6% | 36% |
| ACC | 55% | 43% | 71% | 73% | 72% | 70% | 71% | 67% | 60% | 34% | 72% | 35% |

| | CW | EMA | RIB | RUMP | RBV | IMF | NFI-F | CLAW SET | FOOT ANGLE | LEG ANGLE | \$ABI | \$ABI-L |
|------|-----|------|------|------|------|------|-------|----------|------------|-----------|-------|---------|
| EBV | +65 | +2.3 | -1.6 | -1.5 | +0.6 | +1.7 | -0.26 | +0.70 | +0.88 | +0.88 | \$213 | \$352 |
| RANK | 53% | 90% | 82% | 71% | 40% | 61% | 7% | 21% | 27% | 9% | 36% | 45% |
| ACC | 60% | 59% | 62% | 61% | 56% | 63% | 49% | 73% | 74% | 64% | | |

Traits Observed: CE,BWT,200WT,400WT(x2),SC,Scan(EMA,Rib,Rump,IMF),Structure(Claw Set x 1, Foot Angle x 1),Genomics

There's lots to like about this bull. A big bull made with balance – strong topline, muscle expression, length, depth of body, and head carriage. His dam is well on her way, already achieving a strong ACI. There are some great cows behind her, all leading back to Y55 who was one of our most influential Angus cows to date. She was an impressive cow with high fertility, who produced a number of sale toppers.

..... \$



4

JK CATTLE CO SHEPHERD S703^{SV}

Angus

ID. QLL21S703 HBR DOB. 4/9/2021 AMFU,CAFU,DDFU,NHFU DAM DATA. 2 CALVES, 324 DAY ACI

TUWHARETOA REGENT D145^{PV}SYDGEN EXCEED 3223^{PV}GLENOCH HINMAN H221^{SV}SYDGEN ENHANCE^{SV}GLENOCH FLOWER D80^{SV}

SYDGEN RITA 2618*

SIRE JK CATTLE CO QUAKER Q615^{SV}

DAM JK CATTLE CO FLOWER Q627*

S A V THUNDERBIRD 9061^{SV}GLENOCH FIRST BASE F111^{SV}

GLENOCH-JK WILCOOLA K609*

GLENOCH-JK FLOWER N615*

GLENOCH-JK WILCOOLA H631*

GLENOCH-JK FLOWER K628*

| STRUCTURE | | | | |
|-------------|---|---|---|---|
| CLAW | F | 7 | R | 6 |
| ANGLE | F | 6 | R | 6 |
| REAR LEG | S | 5 | H | 6 |
| TEMPERAMENT | 1 | | | |

Mid June 2023 TransTasman Angus Cattle Evaluation

| TACE | CED | CEM | GL | BW | 200 | 400 | 600 | MCW | MILK | DC | SS | DOC |
|------|------|------|------|------|-----|-----|------|------|------|------|------|-----|
| EBV | +4.9 | -3.1 | -3.6 | +3.9 | +54 | +99 | +139 | +107 | +24 | -1.2 | +1.4 | +25 |
| RANK | 32% | 92% | 69% | 46% | 30% | 26% | 11% | 37% | 8% | 98% | 75% | 28% |
| ACC | 54% | 44% | 71% | 70% | 69% | 67% | 68% | 66% | 59% | 34% | 71% | 37% |

| | CW | EMA | RIB | RUMP | RBV | IMF | NFI-F | CLAW SET | FOOT ANGLE | LEG ANGLE | \$ABI | \$ABI-L |
|------|-----|------|------|------|------|------|-------|----------|------------|-----------|-------|---------|
| EBV | +86 | +7.9 | -2.7 | -3.3 | +0.6 | +3.1 | -0.42 | +0.96 | +0.98 | +1.00 | \$193 | \$328 |
| RANK | 7% | 29% | 94% | 92% | 40% | 24% | 3% | 73% | 52% | 38% | 59% | 63% |
| ACC | 58% | 57% | 59% | 59% | 53% | 62% | 49% | 71% | 71% | 66% | | |

Traits Observed: CE,BWT,200WT,400WT(x2),SC,Scan(EMA,Rib,Rump,IMF),Structure(Claw Set x 1, Foot Angle x 1),Genomics

A quality bull here – so well balanced for length, depth and width, with a very solid structure result too. His dam is a beautiful type of young cow, and has achieved an impressive ACI from her first two calves of just 324 days, during the period of a heifer's first rejoin.

..... \$



5

JK CATTLE CO SPECTACULAR S694^{PV}

Angus

ID. QLL21S694 HBR DOB. 31/8/2021 AMFU,CAFU,DDFU,NHFU DAM DATA. 7 CALVES, 372 DAY ACI

S A V HERITAGE 6295*

TUWHARETOA REGENT D145^{PV}

S A V HARVESTOR 0338*

GLENOC HINMAN H221^{SV}

S A V EMBLYNETTE 7749*

GLENOC FLOWER D80^{SV}SIRE SUGARLOAF HARVESTOR N174^{SV}DAM GLENOC-JK FLOWER K617^{SV}

SYDGEN C C & 7*

SUMMITCREST OUTLOOK*

SUGARLOAF CLEO J15^{SV}

GLENOC FLOWER Y55*

SUGARLOAF CLEO D84^{PV}

GLENOC MOONGARRA V52*

| STRUCTURE | | | | |
|-------------|---|---|---|---|
| CLAW | F | 7 | R | 6 |
| ANGLE | F | 6 | R | 6 |
| REAR LEG | S | 6 | H | 6 |
| TEMPERAMENT | | 1 | | |

Mid June 2023 TransTasman Angus Cattle Evaluation

| TACE | CED | CEM | GL | BW | 200 | 400 | 600 | MCW | MILK | DC | SS | DOC |
|------|------|------|------|------|-----|------|------|------|------|------|------|-----|
| EBV | -2.0 | -1.5 | -1.3 | +6.3 | +60 | +104 | +129 | +130 | +8 | -5.5 | +3.7 | +20 |
| RANK | 82% | 86% | 92% | 90% | 12% | 14% | 25% | 10% | 98% | 27% | 7% | 49% |
| ACC | 55% | 43% | 70% | 74% | 73% | 71% | 71% | 68% | 63% | 36% | 74% | 33% |

| | CW | EMA | RIB | RUMP | RBV | IMF | NFI-F | CLAW SET | FOOT ANGLE | LEG ANGLE | \$ABI | \$ABI-L |
|------|-----|------|------|------|------|------|-------|----------|------------|-----------|-------|---------|
| EBV | +75 | +7.8 | -2.7 | -3.5 | +1.4 | +1.8 | -0.32 | +0.88 | +0.88 | +0.82 | \$212 | \$372 |
| RANK | 25% | 30% | 94% | 93% | 7% | 58% | 5% | 58% | 27% | 4% | 37% | 28% |
| ACC | 61% | 60% | 62% | 62% | 56% | 64% | 50% | 73% | 73% | 68% | | |

Traits Observed: CE,BWT,200WT,400WT(x2),SC,Scan(EMA,Rib,Rump,IMF),Structure(Claw Set x 1, Foot Angle x 1),Genomics

This bull particularly stood out amongst the group as a weaner and yearling, and there's still plenty to him! He shares the same cow-line as lot 3, going back to the great producer in Y55 – one of our most influential cows. A very nice bull who should breed on.

\$



6

JK CATTLE CO SCOOTER S651^{SV}

Angus

ID. QLL21S651 HBR DOB. 9/8/2021 AMFU,CAFU,DDFU,NHFU DAM DATA. 3 CALVES, 349 DAY ACI

S A V HERITAGE 6295*

ARDROSSAN EQUATOR A241^{PV}

S A V HARVESTOR 0338*

GLENOC KALLANGUR K112^{PV}

S A V EMBLYNETTE 7749*

GLENOC FLOWER G72^{SV}SIRE SUGARLOAF HARVESTOR N174^{SV}

DAM GLENOC-JK FLOWER P649*

SYDGEN C C & 7*

GLENOC GALLIPOLI G95^{SV}SUGARLOAF CLEO J15^{SV}GLENOC-JK FLOWER J652^{PV}SUGARLOAF CLEO D84^{PV}

GLENOC FLOWER D226*

| STRUCTURE | | | | |
|-------------|---|---|---|---|
| CLAW | F | 6 | R | 6 |
| ANGLE | F | 6 | R | 6 |
| REAR LEG | S | 5 | H | 6 |
| TEMPERAMENT | | 1 | | |

Mid June 2023 TransTasman Angus Cattle Evaluation

| TACE | CED | CEM | GL | BW | 200 | 400 | 600 | MCW | MILK | DC | SS | DOC |
|------|------|------|------|------|-----|-----|------|-----|------|------|------|-----|
| EBV | -0.1 | +1.3 | -1.1 | +5.4 | +52 | +90 | +116 | +95 | +20 | -6.6 | +1.6 | +19 |
| RANK | 72% | 67% | 94% | 78% | 41% | 50% | 51% | 58% | 29% | 9% | 68% | 55% |
| ACC | 54% | 42% | 69% | 73% | 72% | 70% | 70% | 67% | 60% | 33% | 72% | 32% |

| | CW | EMA | RIB | RUMP | RBV | IMF | NFI-F | CLAW SET | FOOT ANGLE | LEG ANGLE | \$ABI | \$ABI-L |
|------|-----|------|------|------|------|------|-------|----------|------------|-----------|-------|---------|
| EBV | +73 | +7.9 | +1.6 | +4.0 | +0.7 | +1.1 | -0.03 | +0.90 | +0.86 | +0.70 | \$231 | \$373 |
| RANK | 29% | 29% | 16% | 3% | 34% | 77% | 24% | 62% | 23% | 1% | 17% | 27% |
| ACC | 60% | 59% | 61% | 61% | 54% | 63% | 49% | 73% | 73% | 67% | | |

Traits Observed: CE,BWT,200WT,400WT(x2),SC,Scan(EMA,Rib,Rump,IMF),Structure(Claw Set x 1, Foot Angle x 1),Genomics

This bull made the front cover of our pre sale brochure. He's nicely balanced, expressive in his muscle pattern, and out of a cracking young cow beginning to show her ease of re-breed ability. She is by K112, and while we really like his sons, his daughters are going to be a real asset going forward. K112 has done such a great job of muscle expression, fat coverage and fertility. K112 ranks in the top 3% for days to calving, and this young bull S651 ranks in the top 9% for DTC, with plenty of fat coverage and high carcase weight.

\$



7

JK CATTLE CO SHIELD S700^{SV}

Angus

ID. QLL21S700 HBR DOB. 1/9/2021 AMFU,CAFU,DDC,NHFU DAM DATA. 4 CALVES, 367 DAY ACI

PAPA EQUATOR 2928*
ARDROSSAN EQUATOR A241^{PV}
ARDROSSAN PRINCESS W38^{PV}CONNEALY CONSENSUS 7229^{SV}
V A R GENERATION 2100^{PV}
SANDPOINT BLACKBIRD 8809*SIRE GLENOCH KALLANGUR K112^{PV}
TUWHARETOA REGENT D145^{PV}
GLENOCH FLOWER G72^{SV}
GLENOCH FLOWER B133*DAM GLENOCH-JK DORIS N648^{SV}
ARDROSSAN ADMIRAL A2^{PV}
GLENOCH-JK DORIS F603*
K-BAR DORIS Z1*

| STRUCTURE | | | | |
|-------------|---|---|---|---|
| CLAW | F | 6 | R | 6 |
| ANGLE | F | 6 | R | 6 |
| REAR LEG | S | 6 | H | 6 |
| TEMPERAMENT | 1 | | | |

Mid June 2023 TransTasman Angus Cattle Evaluation

| TACE | CED | CEM | GL | BW | 200 | 400 | 600 | MCW | MILK | DC | SS | DOC |
|------|------|-------|------|------|------|------|-------|----------|------------|-----------|-------|---------|
| EBV | +1.0 | +1.6 | -6.0 | +5.0 | +50 | +87 | +109 | +88 | +12 | -4.6 | +1.8 | +30 |
| RANK | 65% | 64% | 30% | 71% | 48% | 60% | 67% | 70% | 85% | 51% | 60% | 14% |
| ACC | 58% | 49% | 72% | 73% | 73% | 71% | 72% | 69% | 64% | 42% | 74% | 49% |
| | CW | EMA | RIB | RUMP | RBV | IMF | NFI-F | CLAW SET | FOOT ANGLE | LEG ANGLE | \$ABI | \$ABI-L |
| EBV | +75 | +11.1 | -0.7 | -0.6 | +1.3 | +2.7 | 0.1 | +0.78 | +0.84 | +0.84 | \$227 | \$359 |
| RANK | 23% | 8% | 64% | 55% | 9% | 33% | 39% | 36% | 20% | 5% | 21% | 39% |
| ACC | 64% | 64% | 65% | 65% | 58% | 68% | 57% | 75% | 75% | 70% | | |

Traits Observed: CE,BWT,200WT,400WT(x2),SC,Scan(EMA,Rib,Rump,IMF),Structure(Claw Set x 1, Foot Angle x 1),Genomics

S700 is full brother to the equal top selling bull last year, and he's shaping up to be every bit as good. Very well balanced, big topped and smooth through the front end, stamped with the muscular expression of his sire K112. He offers high EMA and retail beef yield, and a solid set of 6s for his structural assessment.

..... \$



8

JK CATTLE CO SHARP SHOOTER S713^{SV}

Angus

ID. QLL21S713 HBR DOB. 17/9/2021 AMFU,CAFU,DDFU,NHFU DAM DATA. 6 CALVES, 363 DAY ACI

S A V HERITAGE 6295*
S A V HARVESTOR 0338*
S A V EMBLYNETTE 7749*KAROO W109 DIRECTION Z181^{SV}
CARABAR DOCKLANDS D62^{PV}
CARABAR BLACKCAP MARY B12^{PV}SIRE SUGARLOAF HARVESTOR N174^{SV}
SYDGEN C C & 7*
SUGARLOAF CLEO J15^{SV}
SUGARLOAF CLEO D84^{PV}DAM GLENOCH-JK BLACKCAP MARY L601*
TE MANIA BERKLEY B1^{PV}
CARABAR BLACKCAP MARY H191^{OV}
CARABAR BLACKCAP MARY B37^{PV}

| STRUCTURE | | | | |
|-------------|---|---|---|---|
| CLAW | F | 7 | R | 6 |
| ANGLE | F | 6 | R | 6 |
| REAR LEG | S | 6 | H | 6 |
| TEMPERAMENT | 1 | | | |

Mid June 2023 TransTasman Angus Cattle Evaluation

| TACE | CED | CEM | GL | BW | 200 | 400 | 600 | MCW | MILK | DC | SS | DOC |
|------|------|------|------|------|------|------|-------|----------|------------|-----------|-------|---------|
| EBV | -6.9 | -0.8 | -3.0 | +8.8 | +66 | +116 | +157 | +158 | +11 | -5.2 | +2.7 | +12 |
| RANK | 95% | 83% | 77% | 99% | 4% | 3% | 2% | 2% | 89% | 34% | 26% | 88% |
| ACC | 57% | 47% | 70% | 72% | 73% | 71% | 71% | 68% | 62% | 39% | 74% | 38% |
| | CW | EMA | RIB | RUMP | RBV | IMF | NFI-F | CLAW SET | FOOT ANGLE | LEG ANGLE | \$ABI | \$ABI-L |
| EBV | +84 | +3.7 | -0.8 | -1.2 | +0.6 | -0.5 | -0.34 | +0.60 | +0.80 | +0.86 | \$176 | \$344 |
| RANK | 9% | 80% | 67% | 66% | 40% | 98% | 5% | 9% | 13% | 7% | 75% | 51% |
| ACC | 62% | 60% | 62% | 62% | 56% | 64% | 51% | 74% | 74% | 69% | | |

Traits Observed: CE,BWT,200WT,400WT(x2),SC,Scan(EMA,Rib,Rump,IMF),Structure(Claw Set x 1, Foot Angle x 1),Genomics

There's plenty of depth of body to this fella, he has weighed heavy all along. He offers all growth EBVs in the top few percent of the breed, and his carcass weight is up there too. His mother has proven herself, and her pedigree is almost identical to that of the Carabar bull who sold for over 100k a few years back.

..... \$

PRODUCING AUSTRALIA'S
MOST AWARDED BEEF

Partnering with JK Cattle Company genetics

CONTACT US

Brandon Gallagher
Livestock Procurement Officer
P: 07 4692 2277
M: 0456 621 850
E: brandon@stockyardbeef.com.au



9

JK CATTLE CO SHOW STOPPER S664^{SV}

Angus

ID. QLL21S664 HBR DOB. 14/8/2021 AMFU,CAFU,DDFU,NHFU DAM DATA. 10 CALVES, 360 DAY ACI

C R A BEXTOR 872 5205 608*

TE MANIA UNLIMITED U3271*

G A R PROPHET^{SV}

TE MANIA INFINITY 04 379 AB*

G A R OBJECTIVE 1885*

TE MANIA 95102*

SIRE BALDRIDGE BEAST MODE B074^{PV}DAM GLENOCH-JK NINAH G601^{SV}

STYLES UPGRADE J59*

HA PROGRAM 5652*

BALDRIDGE ISABEL Y69*

GLENOCH-JK NINAH E162*

BALDRIDGE ISABEL T935*

K-BAR NINAH C3*

| STRUCTURE | | | | |
|-------------|---|---|---|---|
| CLAW | F | 7 | R | 6 |
| ANGLE | F | 6 | R | 6 |
| REAR LEG | S | 5 | H | 6 |
| TEMPERAMENT | 1 | | | |

Mid June 2023 TransTasman Angus Cattle Evaluation

| TACE | CED | CEM | GL | BW | 200 | 400 | 600 | MCW | MILK | DC | SS | DOC |
|------|------|------|------|------|------|------|-------|----------|------------|-----------|-------|---------|
| EBV | +3.4 | -0.1 | -1.9 | +4.5 | +65 | +111 | +136 | +118 | +14 | -3.1 | +2.9 | +26 |
| RANK | 45% | 78% | 88% | 60% | 4% | 7% | 15% | 21% | 78% | 86% | 21% | 25% |
| ACC | 66% | 58% | 83% | 75% | 75% | 73% | 74% | 72% | 70% | 49% | 76% | 56% |
| | CW | EMA | RIB | RUMP | RBV | IMF | NFI-F | CLAW SET | FOOT ANGLE | LEG ANGLE | \$ABI | \$ABI-L |
| EBV | +71 | +3.7 | -2.3 | -2.8 | +0.0 | +3.4 | 0.43 | +0.64 | +0.58 | +0.88 | \$220 | \$378 |
| RANK | 37% | 80% | 91% | 88% | 77% | 19% | 79% | 13% | 1% | 9% | 28% | 24% |
| ACC | 67% | 66% | 67% | 67% | 63% | 69% | 58% | 76% | 76% | 72% | | |

Traits Observed: GL,CE,BWT,200WT,400WT(x2),SC,Scan(EMA,Rib,Rump,IMF),Structure(Claw Set x 1, Foot Angle x 1),Genomics

What a beauty this bloke is! We used him over Angus and Brangus cows as a yearling, and we seriously considered keeping him for ourselves. We have collected semen, and have nominated him for Cohort 14 of the Angus Sire Benchmarking Program this year. He weighed a thumping 460kg when weaned. At 13 months he weighed 628kg and scanned 108cm² for EMA, 7.3% for IMF, 6mm rib and 9mm rump. He's the only son in the sale by his well-known sire, Beast Mode, though it's his dam who's the big reason behind these stats. She also has awesome fertility performance - 10 calves for a 360 day ACI. We are retaining the right to collect semen for our own use, retaining semen marketing rights and 50% revenue sharing interest (we are open to negotiation by interested parties prior to the sale).

\$



10

JK CATTLE CO SCOTCH WHISKEY S649^{SV}

Angus

ID. QLL21S649 HBR DOB. 8/8/2021 AMF,CAF,DDF,NHF,DWF,MAF,MHF,OHF,OSF,RGF DAM DATA. 2 CALVES, 395 DAY ACI

G A R EARLY BIRD*

AYRVALE GENERAL G18^{PV}G A R ASHLAND^{PV}GLENOCH-JK NEGOTIATE N612^{SV}

CHAIR ROCK AMBUSH 1018*

GLENOCH-JK BEAUTY J639*

SIRE G A R HOME TOWN^{PV}DAM JK CATTLE CO ANN Q661^{PV}G A R SURE FIRE^{SV}GLENOCH HINMAN H221^{SV}

CHAIR ROCK SURE FIRE 6095*

GLENOCH-JK ANN K615^{SV}

CHAIR ROCK PROGRESS 3005*

GLENOCH-JK ANN F606^{SV}

| STRUCTURE | | | | |
|-------------|---|---|---|---|
| CLAW | F | 7 | R | 6 |
| ANGLE | F | 6 | R | 6 |
| REAR LEG | S | 6 | H | 6 |
| TEMPERAMENT | 1 | | | |

Mid June 2023 TransTasman Angus Cattle Evaluation

| TACE | CED | CEM | GL | BW | 200 | 400 | 600 | MCW | MILK | DC | SS | DOC |
|------|------|-------|------|------|------|------|-------|----------|------------|-----------|-------|---------|
| EBV | +2.1 | -3.1 | -4.0 | +4.0 | +64 | +107 | +138 | +131 | +17 | -3.9 | +2.0 | +19 |
| RANK | 56% | 92% | 62% | 48% | 6% | 11% | 13% | 10% | 53% | 71% | 52% | 52% |
| ACC | 60% | 47% | 81% | 74% | 74% | 71% | 72% | 69% | 63% | 36% | 75% | 52% |
| | CW | EMA | RIB | RUMP | RBV | IMF | NFI-F | CLAW SET | FOOT ANGLE | LEG ANGLE | \$ABI | \$ABI-L |
| EBV | +79 | +11.4 | -3.6 | -5.6 | +1.1 | +5.2 | 0.2 | +1.30 | +0.98 | +0.80 | \$245 | \$408 |
| RANK | 15% | 7% | 98% | 99% | 14% | 3% | 53% | 99% | 52% | 3% | 8% | 9% |
| ACC | 63% | 63% | 64% | 63% | 57% | 67% | 52% | 75% | 76% | 70% | | |

Traits Observed: GL,CE,BWT,200WT,400WT(x2),SC,Scan(EMA,Rib,Rump,IMF),Structure(Claw Set x 1, Foot Angle x 1),Genomics

This bull made the catalogue cover, with his powerful constitution, slick skin and real sire appeal. There's plenty of presence to him, backed up by a great cow-line and impressive EBVs. For many years we have spoken about the Ann cow family. His maternal grandmother K615 is the mother of Glenoch-JK Makahu M602 - the bull we sold to Glatz Black Angus in S.A. a few years ago, and his semen sold well through Agri-Gene. We used S649 as a yearling over Angus and Brangus cows and really look forward to his progeny.

\$



11

JK CATTLE CO SIGNATURE S634^{PV}

Angus

ID. QLL21S634 HBR DOB. 6/8/2021 AMF,CAF,DDF,NHF,DWF, MAF,MHF,OHF,OSF,RGF DAM DATA. 2 CALVES, 381 DAY ACI

G A R EARLY BIRD[#]G A R ASHLAND^{PV}CHAIR ROCK AMBUSH 1018[#]RENNYLEA EDMUND E11^{PV}RENNYLEA KODAK K522^{SV}RENNYLEA EISA ERICA F810[#]SIRE G A R HOME TOWN^{PV}DAM JK CATTLE CO NINAH Q629^{SV}G A R SURE FIRE^{SV}CHAIR ROCK SURE FIRE 6095[#]CHAIR ROCK PROGRESS 3005[#]JMB TRACTION 292^{PV}GLENOCH-JK NINAH N630^{SV}GLENOCH-JK NINAH G601^{SV}

| STRUCTURE | | | | |
|-------------|---|---|---|---|
| CLAW | F | 7 | R | 6 |
| ANGLE | F | 6 | R | 6 |
| REAR LEG | S | 6 | H | 6 |
| TEMPERAMENT | 1 | | | |

Mid June 2023 TransTasman Angus Cattle Evaluation

| TACE | CED | CEM | GL | BW | 200 | 400 | 600 | MCW | MILK | DC | SS | DOC |
|------|------|------|------|------|-----|------|------|------|------|------|------|-----|
| EBV | +4.0 | +4.4 | -5.9 | +4.5 | +62 | +110 | +139 | +111 | +15 | -4.2 | +1.9 | +18 |
| RANK | 40% | 35% | 31% | 60% | 7% | 11% | 31% | 67% | 63% | 56% | 60% | |
| ACC | 60% | 47% | 83% | 74% | 74% | 72% | 72% | 69% | 63% | 37% | 75% | 55% |

| | CW | EMA | RIB | RUMP | RBV | IMF | NFI-F | CLAW SET | FOOT ANGLE | LEG ANGLE | \$ABI | \$ABI-L |
|------|-----|-------|------|------|------|------|-------|----------|------------|-----------|-------|---------|
| EBV | +80 | +14.0 | -1.1 | -3.7 | +1.1 | +4.1 | 0.46 | +1.06 | +0.82 | +0.84 | \$272 | \$437 |
| RANK | 14% | 2% | 73% | 94% | 14% | 9% | 82% | 87% | 16% | 5% | 2% | 2% |
| ACC | 63% | 63% | 64% | 63% | 58% | 67% | 52% | 76% | 76% | 70% | | |

Traits Observed: GL,C,E,BWT,200WT,400WT(x2),SC,Scan(EMA,Rib,Rump,IMF),Structure(Claw Set x 1, Foot Angle x 1),Genomics

S634 is a cracking bull, with moderate birth and frame, fast growth, big EMA and IMF, and balance across other traits. He's top 2% for both \$Indexes, and very similar to the previous lot. He's backed up by a great cow-line, going back to G601 (10 calves, 360 day ACI) who is the mother of lot 9. We used S634 as a yearling over cows, and he was a real cow-getter.

\$.....



12

JK CATTLE CO STEAKHOUSE S608^{SV}

Angus

ID. QLL21S608 HBR DOB. 29/7/2021 AMFU,CAFU,DDFU,NHFU DAM DATA. 5 CALVES, 354 DAY ACI

G A R EARLY BIRD[#]G A R ASHLAND^{PV}CHAIR ROCK AMBUSH 1018[#]KC HAAS GPS[#]TEXAS MOUNT K002^{PV}TEXAS UNDINE Z183^{PV}SIRE G A R HOME TOWN^{PV}DAM GLENOCH-JK ANN M632^{PV}G A R SURE FIRE^{SV}CHAIR ROCK SURE FIRE 6095[#]CHAIR ROCK PROGRESS 3005[#]TE MANIA INFINITY 04 379 AB[#]GLENOCH-JK ANN F606^{SV}GLENOCH ANN C102^{SV}

| STRUCTURE | | | | |
|-------------|---|---|---|---|
| CLAW | F | 6 | R | 6 |
| ANGLE | F | 6 | R | 6 |
| REAR LEG | S | 6 | H | 6 |
| TEMPERAMENT | 1 | | | |

Mid June 2023 TransTasman Angus Cattle Evaluation

| TACE | CED | CEM | GL | BW | 200 | 400 | 600 | MCW | MILK | DC | SS | DOC |
|------|-------|------|-------|------|-----|-----|------|-----|------|------|------|-----|
| EBV | +11.5 | +7.3 | -11.7 | -0.1 | +49 | +96 | +118 | +90 | +22 | -5.1 | +2.8 | +15 |
| RANK | 1% | 10% | 1% | 2% | 53% | 33% | 48% | 67% | 16% | 37% | 23% | 73% |
| ACC | 61% | 49% | 83% | 75% | 74% | 72% | 73% | 70% | 64% | 39% | 75% | 55% |

| | CW | EMA | RIB | RUMP | RBV | IMF | NFI-F | CLAW SET | FOOT ANGLE | LEG ANGLE | \$ABI | \$ABI-L |
|------|-----|-------|------|------|------|------|-------|----------|------------|-----------|-------|---------|
| EBV | +68 | +11.8 | -2.0 | -3.7 | +0.7 | +4.6 | 0.65 | +1.04 | +1.02 | +1.00 | \$245 | \$405 |
| RANK | 44% | 6% | 88% | 94% | 34% | 5% | 93% | 85% | 62% | 38% | 9% | 10% |
| ACC | 64% | 64% | 65% | 64% | 59% | 67% | 53% | 76% | 76% | 70% | | |

Traits Observed: GL,C,E,BWT,200WT,400WT(x2),SC,Scan(EMA,Rib,Rump,IMF),Structure(Claw Set x 1, Foot Angle x 1),Genomics

There's plenty of length, neck extension and ideal head carriage in the fella. He's from the great Ann cow family that has worked so well for us, and his mother has certainly proved herself for fertility. He has an awesome set of EBVs to back him up, and ranks highly for calving ease, EMA and IMF. We used him over yearling heifers.

\$.....



13

JK CATTLE CO STOCKTON S611^{SV}

Angus

ID. QLL21S611 HBR DOB. 31/7/2021 AMFU,CAFU,DDFU,NHFU DAM DATA. 2 CALVES, 353 DAY ACI

G A R EARLY BIRD[#]ARDROSSAN EQUATOR A241^{PV}G A R ASHLAND^{PV}GLENOC H KALLANGUR K112^{PV}CHAIR ROCK AMBUSH 1018[#]GLENOC FLOWER G72^{SV}SIRE G A R HOME TOWN^{PV}DAM JK CATTLE CO LEONIE Q647[#]G A R SURE FIRE^{SV}GLENOC GALAXY G55^{SV}CHAIR ROCK SURE FIRE 6095[#]GLENOC-JK LEONIE L632[#]CHAIR ROCK PROGRESS 3005[#]LAWSON'S PAYLOAD W346[#]

| STRUCTURE | | | | |
|-------------|---|---|---|---|
| CLAW | F | 7 | R | 6 |
| ANGLE | F | 6 | R | 6 |
| REAR LEG | S | 5 | H | 6 |
| TEMPERAMENT | 1 | | | |

Mid June 2023 TransTasman Angus Cattle Evaluation

| TACE | CED | CEM | GL | BW | 200 | 400 | 600 | MCW | MILK | DC | SS | DOC |
|------|------|------|------|------|------|------|-------|----------|------------|-----------|-------|---------|
| EBV | +3.2 | +5.7 | -7.3 | +3.6 | +53 | +87 | +103 | +64 | +13 | -7.7 | +2.4 | +22 |
| RANK | 47% | 22% | 15% | 39% | 38% | 61% | 78% | 94% | 82% | 2% | 36% | 40% |
| ACC | 58% | 45% | 81% | 74% | 73% | 71% | 72% | 68% | 61% | 35% | 74% | 52% |
| | CW | EMA | RIB | RUMP | RBV | IMF | NFI-F | CLAW SET | FOOT ANGLE | LEG ANGLE | \$ABI | \$ABI-L |
| EBV | +65 | +8.0 | +2.5 | +3.2 | -0.2 | +3.2 | 0.35 | +1.02 | +0.88 | +0.80 | \$266 | \$404 |
| RANK | 54% | 28% | 7% | 6% | 85% | 22% | 72% | 82% | 27% | 3% | 2% | 10% |
| ACC | 62% | 63% | 63% | 63% | 57% | 66% | 51% | 76% | 76% | 70% | | |

Traits Observed: GL,CE,BWT,200WT,400WT(x2),SC,Scan(EMA,Rib,Rump,IMF),Structure(Claw Set x 1, Foot Angle x 1),Genomics

This guy sure bends the curve for calving ease, adequate growth, low mature cow weight, superior fertility traits, muscle expression, fat coverage and high IMF. He's out of a K112 daughter, with early re-breed data on her first rejoin.

..... \$.....



14

JK CATTLE CO SECRET SERVICE S669^{SV}

Angus

ID. QLL21S669 HBR DOB. 18/8/2021 AMFU,CAFU,DDFU,NHFU DAM DATA. 3 CALVES, 356 DAY ACI

S A V HERITAGE 6295[#]PATHFINDER GENESIS G357^{PV}S A V HARVESTOR 0338[#]PATHFINDER COMPLETE K22^{SV}S A V EMBLYNETTE 7749[#]PATHFINDER EQUATOR H756[#]SIRE SUGARLOAF HARVESTOR N174^{SV}DAM GLENOC-JK ANN P602[#]SYDGEN C C & 7[#]GLENOC HINMAN H221^{SV}SUGARLOAF CLEO J15^{SV}GLENOC-JK ANN K615^{SV}SUGARLOAF CLEO D84^{PV}GLENOC-JK ANN F606^{SV}

| STRUCTURE | | | | |
|-------------|---|---|---|---|
| CLAW | F | 7 | R | 6 |
| ANGLE | F | 6 | R | 6 |
| REAR LEG | S | 6 | H | 6 |
| TEMPERAMENT | 1 | | | |

Mid June 2023 TransTasman Angus Cattle Evaluation

| TACE | CED | CEM | GL | BW | 200 | 400 | 600 | MCW | MILK | DC | SS | DOC |
|------|------|------|------|------|------|------|-------|----------|------------|-----------|-------|---------|
| EBV | -1.8 | -2.0 | -4.9 | +8.0 | +61 | +110 | +147 | +151 | +18 | -4.7 | +2.9 | +22 |
| RANK | 81% | 88% | 47% | 99% | 10% | 8% | 6% | 3% | 45% | 48% | 21% | 39% |
| ACC | 56% | 44% | 71% | 73% | 72% | 70% | 71% | 68% | 61% | 35% | 73% | 37% |
| | CW | EMA | RIB | RUMP | RBV | IMF | NFI-F | CLAW SET | FOOT ANGLE | LEG ANGLE | \$ABI | \$ABI-L |
| EBV | +79 | +2.3 | -3.4 | -4.7 | +1.3 | +0.1 | -0.31 | +0.62 | +0.86 | +0.82 | \$170 | \$338 |
| RANK | 16% | 90% | 98% | 98% | 9% | 94% | 6% | 11% | 23% | 4% | 79% | 56% |
| ACC | 61% | 60% | 62% | 62% | 56% | 64% | 50% | 72% | 73% | 68% | | |

Traits Observed: CE,BWT,200WT,400WT(x2),SC,Scan(EMA,Rib,Rump,IMF),Structure(Claw Set x 1, Foot Angle x 1),Genomics

He's a proper meat machine, carrying a lot of similar characteristics to his sire. His mother is showing all the signs to prove herself for fertility, and her mother is the mother of Glenoch-JK Makahu M602. The Ann family has been a great one for us.

..... \$.....



specialising in:

Succession Planning
Debt Advisory
Milestone Management & Advice
Business Consultancy & Advocacy

Your working farm financial experts

Get in touch with us today.
 Simply scan the QR code.
www.homesteadagribusiness.com.au



15

JK CATTLE CO SPECTRE S552 (P)

Brangus

ID. QLL21FS552 DOB. 26/8/2021 31% CONTENT COAT. ED/ED DAM DATA. 4 CALVES, 366 DAY ACI

CRC NORTH STAR 9U8W3 (P)
BELVIEW FLYNN M012 (P) (AI)
BELVIEW CAITRINA (P)COLE OF BRINKS 14P3 (P)
NINDOOINBAH F707 (P) (ET)
MS BRINKS SONAR 596R5 (P)

SIRE BELVIEW POSIEDON P052 (P)

DAM GLENOCH JK BERNIE N532 (P)

CSONKA OF BRINKS 30R4 (P)
BELVIEW ZENA (P) (ET)
BELVIEW PERRI (P)GLENOCH DEALER D66 (P)
GLENOCH BERNIE F129 (P)
GLENOCH BERNIE D216 (P)

| STRUCTURE | | | | |
|-------------|---|---|---|---|
| CLAW | F | 7 | R | 6 |
| ANGLE | F | 6 | R | 6 |
| REAR LEG | S | 7 | H | 7 |
| TEMPERAMENT | | 1 | | |

June 2023 Brangus BREEDPLAN

| | GL | BW | 200 | 400 | 600 | MCW | MILK | SS |
|------|------|------|-----|-----|-----|-----|------|------|
| EBV | -1.2 | +1.8 | +17 | +36 | +40 | +31 | +1 | +2.0 |
| RANK | 25% | 95% | 20% | 10% | 10% | 20% | 10% | 10% |
| ACC | 43% | 75% | 68% | 67% | 64% | 50% | 39% | 71% |

| | CW | EMA | RIB | RUMP | RBV | IMF | \$EXP | \$DOM |
|------|-----|------|------|------|------|------|-------|-------|
| EBV | +19 | +2.5 | +0.6 | +0.7 | +0.6 | +0.0 | \$33 | \$33 |
| RANK | 20% | 10% | 20% | 20% | 20% | 90% | 10% | 15% |
| ACC | 55% | 47% | 56% | 56% | 47% | 46% | | |

Traits Observed: BWT,200WT,400WT(x2),SS,FAT,EMA,IMF

A big, long, stretchy bull to start the Brangus run. He has gained well all along and is out of nice cow, well on her way to proving herself for fertility. Nicely balanced in his EBVs, and could present good buying value being the first Brangus bull to sell. Homozygous Polled. Tenderness Rating: 5.

\$



16

JK CATTLE CO STELLAR S570 (P)

Brangus

ID. QLL21RS570 DOB. 15/9/2021 35% CONTENT COAT. ED/ED DAM DATA. 8 CALVES, 375 DAY ACI

CRC NORTH STAR 9U8W3 (P)
BELVIEW FLYNN M012 (P) (AI)
BELVIEW CAITRINA (P)COLE OF BRINKS 14P3 (P)
NINDOOINBAH F707 (P) (ET)
MS BRINKS SONAR 596R5 (P)

SIRE BELVIEW POSIEDON P052 (P)

DAM GLENOCH JK FLOWER J509 (P)

CSONKA OF BRINKS 30R4 (P)
BELVIEW ZENA (P) (ET)
BELVIEW PERRI (P)SANDON REAGAN A5 (P) (AI)
GLENOCH JK FLOWER C145 (S)
GLENOCH JK FLOWER A177 (P)

| STRUCTURE | | | | |
|-------------|---|---|---|---|
| CLAW | F | 6 | R | 6 |
| ANGLE | F | 6 | R | 7 |
| REAR LEG | S | 6 | H | 6 |
| TEMPERAMENT | | 1 | | |

June 2023 Brangus BREEDPLAN

| | GL | BW | 200 | 400 | 600 | MCW | MILK | SS |
|------|------|------|-----|-----|-----|-----|------|------|
| EBV | -0.5 | +4.0 | +22 | +42 | +54 | +47 | +1 | +3.0 |
| RANK | 65% | 99% | 10% | 5% | 5% | 5% | 10% | 1% |
| ACC | 44% | 75% | 68% | 67% | 65% | 51% | 41% | 71% |

| | CW | EMA | RIB | RUMP | RBV | IMF | \$EXP | \$DOM |
|------|-----|------|------|------|------|------|-------|-------|
| EBV | +26 | +4.6 | +0.3 | +0.4 | +1.6 | -0.3 | \$41 | \$40 |
| RANK | 5% | 1% | 35% | 35% | 1% | 99% | 5% | 5% |
| ACC | 56% | 47% | 57% | 57% | 48% | 47% | | |

Traits Observed: BWT,200WT,400WT(x2),SS,FAT,EMA,IMF

S570 is big topped, long and with plenty of presence – a very nice bull. His mother J509 has produced two of the top selling Brangus bulls for us at previous sales. She's long, wedge shaped and very correct in her udder. She's an older cow now and still producing the goods. Homozygous Polled. Tenderness Rating: 9.

\$



Roma Agribusiness Team

Business Banking Executive - Jason Coonan 0427 645 871
Agribusiness Manager - Hugh Scott 0428 190 772

agribusiness



17

JK CATTLE CO SIGNATORY S512 (P)

Brangus

ID. QLL21RS512 DOB. 8/8/2021 38% CONTENT COAT. ED/ED DAM DATA. 7 CALVES, 369 DAY ACI

CSONKA OF BRINKS 30R4 (P)
 TELPARA HILLS MUNDINE 820J2 (P) (AI)
 TELPARA HILLS MISS L11 820D4 (P)

COLE OF BRINKS 14P3 (P)
 NINDOOINBAH F707 (P) (ET)
 MS BRINKS SONAR 596R5 (P)

SIRE BIMBADEEN Q PICUS P108 (P)

DAM GLENOCH JK MYTH K506 (P)

DOONSIDE DR MOK (S)
 BIMBADEEN Q G0158 (P)
 BIMBADEEN Q R608 (P)

BOOROOMOOKA UNDERTAKEN Y145 (P)
 GLENOCH JK MYTH C502 (P) (AI)
 GLENOCH JK MYTH A522 (P)

| STRUCTURE | | | | |
|-------------|---|---|---|---|
| CLAW | F | 6 | R | 5 |
| ANGLE | F | 6 | R | 6 |
| REAR LEG | S | 6 | H | 6 |
| TEMPERAMENT | | | | 1 |

June 2023 Brangus BREEDPLAN

| | GL | BW | 200 | 400 | 600 | MCW | MILK | SS |
|------|------|------|-----|-----|-----|-----|------|------|
| EBV | -0.9 | +0.8 | +17 | +28 | +32 | +31 | +1 | +0.3 |
| RANK | 40% | 80% | 20% | 25% | 25% | 20% | 10% | 55% |
| ACC | 46% | 77% | 69% | 68% | 66% | 52% | 46% | 72% |

| | CW | EMA | RIB | RUMP | RBV | IMF | \$EXP | \$DOM |
|------|-----|------|------|------|------|------|-------|-------|
| EBV | +18 | +1.6 | -0.2 | -0.3 | +0.9 | -0.1 | \$26 | \$25 |
| RANK | 20% | 30% | 75% | 80% | 10% | 95% | 25% | 30% |
| ACC | 57% | 49% | 58% | 58% | 49% | 48% | | |

Traits Observed: BWT,200WT,400WT(x2),SS,FAT,EMA,IMF

There's a lot to like about this bull. He has been fast growing since he was a calf, weighed heavy, is very clean through his underline, and his dam has produced the goods many times. He's very correct in his feet, smooth through his shoulders, with a nicely balanced set of EBVs. Homozygous Polled. Tenderness Rating: 6.

\$



18

JK CATTLE CO SOMBRE S533 (P)

Brangus

ID. QLL21F5533 DOB. 18/8/2021 27% CONTENT COAT. ED/ED DAM DATA. 4 CALVES, 376 DAY ACI

CSONKA OF BRINKS 30R4 (P)
 TELPARA HILLS MUNDINE 820J2 (P) (AI)
 TELPARA HILLS MISS L11 820D4 (P)

MATAURI REALITY 839 (P)
 GLENOCH LYNDON L866 (P)
 GLENOCH BEAUTY H224 (P)

SIRE BIMBADEEN Q PICUS P108 (P)

DAM GLENOCH JK RUTH N548 (P)

DOONSIDE DR MOK (S)
 BIMBADEEN Q G0158 (P)
 BIMBADEEN Q R608 (P)

NINDOOINBAH F707 (P) (ET)
 GLENOCH JK RUTH J511 (P)
 LAWSONS TANK A1163 (P) (AI)

| STRUCTURE | | | | |
|-------------|---|---|---|---|
| CLAW | F | 7 | R | 6 |
| ANGLE | F | 6 | R | 6 |
| REAR LEG | S | 6 | H | 6 |
| TEMPERAMENT | | | | 1 |

June 2023 Brangus BREEDPLAN

| | GL | BW | 200 | 400 | 600 | MCW | MILK | SS |
|------|------|------|-----|-----|-----|-----|------|------|
| EBV | -1.4 | +1.2 | +19 | +38 | +45 | +38 | +1 | +3.5 |
| RANK | 15% | 90% | 15% | 10% | 5% | 15% | 10% | 1% |
| ACC | 43% | 76% | 68% | 66% | 64% | 50% | 41% | 71% |

| | CW | EMA | RIB | RUMP | RBV | IMF | \$EXP | \$DOM |
|------|-----|------|------|------|------|------|-------|-------|
| EBV | +23 | +3.1 | +0.0 | -0.1 | +0.9 | +0.5 | \$41 | \$45 |
| RANK | 10% | 5% | 60% | 65% | 10% | 10% | 5% | 1% |
| ACC | 55% | 46% | 56% | 55% | 46% | 44% | | |

Traits Observed: BWT,200WT,400WT(x2),SS,FAT,EMA,IMF

Love the depth of body, thickness, structural soundness and clean underline to this bull. He has always stood out – he weighed over 400kg at weaning, and scanned over 100cm² for EMA at 13 months. Very balanced across his EBVs, with high ranking \$Indexes – top 1% and 5%. We would be very happy to breed more bulls like him. Homozygous Polled. Tenderness Rating: 9.

\$



19

JK CATTLE CO STADIUM S582 (P)

Brangus

ID. QLL21F5582 DOB. 26/9/2021 30% CONTENT COAT. ED/ED DAM DATA. 4 CALVES, 383 DAY ACI

CRC NORTH STAR 9U8W3 (P)
BELVIEW FLYNN M012 (P) (AI)
BELVIEW CAITRINA (P)ARDROSSAN EQUATOR A241 (P) (ET)
GLENOCH KALLANGUR K112 (P)
GLENOCH FLOWER G72 (P)

SIRE BELVIEW POSIEDON P052 (P)

DAM GLENOCH JK MYTH N553 (P)

CSONKA OF BRINKS 30R4 (P)
BELVIEW ZENA (P) (ET)
BELVIEW PERRI (P)NINDOOINBAH F707 (P) (ET)
GLENOCH JK MYTH J501 (P)
GLENOCH JK MYTH C502 (P) (AI)

| STRUCTURE | | | | |
|-------------|---|---|---|---|
| CLAW | F | 6 | R | 6 |
| ANGLE | F | 6 | R | 7 |
| REAR LEG | S | 7 | H | 6 |
| TEMPERAMENT | | | | 1 |

June 2023 Brangus BREEDPLAN

| | GL | BW | 200 | 400 | 600 | MCW | MILK | SS |
|------|------|------|-----|-----|-----|-----|------|------|
| EBV | -0.4 | +2.4 | +15 | +35 | +42 | +34 | +1 | +2.9 |
| RANK | 70% | 99% | 25% | 15% | 10% | 20% | 10% | 1% |
| ACC | 43% | 75% | 68% | 66% | 64% | 50% | 38% | 70% |

| | CW | EMA | RIB | RUMP | RBV | IMF | \$EXP | \$DOM |
|------|-----|------|------|------|------|------|-------|-------|
| EBV | +21 | +4.0 | +0.5 | +0.5 | +1.0 | +0.4 | \$36 | \$36 |
| RANK | 10% | 1% | 25% | 30% | 10% | 15% | 5% | 10% |
| ACC | 55% | 46% | 56% | 56% | 47% | 46% | | |

Traits Observed: BWT,200WT,400WT(x2),SS,FAT,EMA,IMF

A great looking bull, we considered using him as a yearling over cows. Big topped, well in the top 1% for EMA, and for a big EMA bull he is also very correct in his feet, with plenty of heel and little to no curl. Love the cow-line, featuring K112, J501 and C502. An awesome bull. Homozygous Polled. Tenderness Rating: 7.

\$



20

JK CATTLE CO SPORTSMAN S565 (U) (P)

Ultrablack

ID. QLL21U5565 DOB. 8/9/2021 22% CONTENT COAT. ED/ED DAM DATA. 4 CALVES, 370 DAY ACI

PAPA EQUATOR 2928 (P)
ARDROSSAN EQUATOR A241 (P) (ET)
ARDROSSAN PRINCESS W38 (P) (ET)COLE OF BRINKS 14P3 (P)
NINDOOINBAH F707 (P) (ET)
MS BRINKS SONAR 596R5 (P)

SIRE GLENOCH KALLANGUR K112 (P)

DAM GLENOCH JK INDIE N530 (P)

TUWHARETOA REGENT D145 (P)
GLENOCH FLOWER G72 (P)
GLENOCH FLOWER B133 (P)BONOX 232 (P)
GLENOCH JK INDIE B502 (P)
BRANGUS COW (P)

| STRUCTURE | | | | |
|-------------|---|---|---|---|
| CLAW | F | 7 | R | 6 |
| ANGLE | F | 7 | R | 7 |
| REAR LEG | S | 7 | H | 6 |
| TEMPERAMENT | | | | 1 |

June 2023 Brangus BREEDPLAN

| | GL | BW | 200 | 400 | 600 | MCW | MILK | SS |
|------|------|------|-----|-----|-----|-----|------|------|
| EBV | +0.7 | +3.7 | +17 | +36 | +40 | +41 | -2 | +2.2 |
| RANK | 99% | 99% | 20% | 10% | 10% | 10% | 45% | 5% |
| ACC | 45% | 76% | 67% | 66% | 64% | 49% | 46% | 71% |

| | CW | EMA | RIB | RUMP | RBV | IMF | \$EXP | \$DOM |
|------|-----|------|------|------|------|------|-------|-------|
| EBV | +18 | +2.3 | +2.2 | +2.7 | -0.7 | +0.9 | \$26 | \$27 |
| RANK | 20% | 10% | 1% | 1% | 99% | 1% | 25% | 25% |
| ACC | 55% | 45% | 55% | 55% | 45% | 44% | | |

Traits Observed: BWT,200WT,400WT(x2),SS,FAT,EMA,IMF

A nice looking bull - balanced, expressive in his muscle pattern, with an ideal skin type. By the ever-consistent K112, he also passes on his fat coverage and marbling attributes. Homozygous Polled. Tenderness Rating: 5.

\$

21

JK CATTLE CO SKYSCRAPER S494 (U) (P)

Ultrablack

ID. QLL21U5494 DOB. 28/7/2021 22% CONTENT COAT. ED/ED DAM DATA. 6 CALVES, 362 DAY ACI

CRC NORTH STAR 9U8W3 (P)
BELVIEW FLYNN M012 (P) (AI)
BELVIEW CAITRINA (P)DUNOON REAGAN R093 (P) (ET)
GLENOCH GALAXY G55 (P) (AI)
GLENOCH WATTLE E137 (P) (AI)

SIRE BELVIEW POSIEDON P052 (P)

DAM GLENOCH-JK FLOWER L608 (P)

CSONKA OF BRINKS 30R4 (P)
BELVIEW ZENA (P) (ET)
BELVIEW PERRI (P)GLENOCH GALLIPOLI G95 (P)
GLENOCH-JK FLOWER J652 (P)
GLENOCH-JK FLOWER F605 (P)

| STRUCTURE | | | | |
|-------------|---|---|---|---|
| CLAW | F | 6 | R | 6 |
| ANGLE | F | 6 | R | 6 |
| REAR LEG | S | 6 | H | 6 |
| TEMPERAMENT | | | | 1 |

June 2023 Brangus BREEDPLAN

| | GL | BW | 200 | 400 | 600 | MCW | MILK | SS |
|------|------|------|-----|-----|-----|-----|------|------|
| EBV | -2.9 | -0.5 | +12 | +27 | +33 | +29 | +2 | +2.8 |
| RANK | 1% | 45% | 40% | 30% | 20% | 25% | 5% | 1% |
| ACC | 40% | 74% | 65% | 64% | 61% | 46% | 36% | 70% |

| | CW | EMA | RIB | RUMP | RBV | IMF | \$EXP | \$DOM |
|------|-----|------|------|------|------|------|-------|-------|
| EBV | +15 | +1.1 | +0.4 | +0.4 | +0.1 | +0.6 | \$30 | \$37 |
| RANK | 35% | 55% | 30% | 35% | 70% | 5% | 15% | 10% |
| ACC | 52% | 42% | 51% | 51% | 41% | 40% | | |

Traits Observed: BWT,200WT,400WT(x2),SS,FAT,EMA,IMF

A well balanced bull who has stood out since a calf, with a great spread of EBVs to back him up. His EBVs suggest he is suitable over heifers, and his raw birth weight was a couple of kg below the average for that year. His mother is well proven now, and she always produces a great calf. Performance and depth of breeding here. Homozygous Polled. Tenderness Rating: 6.

\$

22

JK CATTLE CO STATESMAN S522 (P)

Brangus

ID. QLL21F5522 DOB. 14/8/2021 31% CONTENT COAT. ED/ED DAM DATA. 6 CALVES, 366 DAY ACI

CRC NORTH STAR 9U8W3 (P)
BELVIEW FLYNN M012 (P) (AI)
BELVIEW CAITRINA (P)

SIRE BELVIEW POSIEDON P052 (P)

CSONKA OF BRINKS 30R4 (P)
BELVIEW ZENA (P) (ET)
BELVIEW PERRI (P)

COLE OF BRINKS 14P3 (P)
NINDOOINBAH F707 (P) (ET)
MS BRINKS SONAR 596R5 (P)

DAM GLENOCH JK FLOWER K517 (P)

BURTHLENE PATRIOT 47M (P)
GLENOCH FLOWER E292 (P) (ET)
GLENOCH FLOWER Y16 (P)

| STRUCTURE | | | | |
|-------------|---|---|---|---|
| CLAW | F | 6 | R | 6 |
| ANGLE | F | 6 | R | 6 |
| REAR LEG | S | 6 | H | 6 |
| TEMPERAMENT | 1 | | | |

June 2023 Brangus BREEDPLAN

| | GL | BW | 200 | 400 | 600 | MCW | MILK | SS |
|------|------|------|------|------|------|------|-------|-------|
| EBV | -1.3 | +0.5 | +12 | +25 | +33 | +26 | +0 | +1.9 |
| RANK | 20% | 75% | 40% | 35% | 20% | 30% | 15% | 10% |
| ACC | 44% | 75% | 68% | 67% | 65% | 51% | 40% | 71% |
| | CW | EMA | RIB | RUMP | RBV | IMF | \$EXP | \$DOM |
| EBV | +18 | +3.7 | -0.4 | -0.6 | +1.6 | -0.2 | \$31 | \$33 |
| RANK | 20% | 1% | 85% | 90% | 1% | 99% | 15% | 15% |
| ACC | 56% | 47% | 56% | 56% | 47% | 46% | | |

Traits Observed: BWT,200WT,400WT(x2),SS,FAT,EMA,IMF

Very nice expression and shape to this fella, with a tidy underline. He scored well for structure, balanced EBVs, and out of a cow well proven for fertility. Back in her pedigree is Burthlene Patriot, who was well known for very maternal, functional fertile daughters in the Angus breed. Homozygous Polled. Tenderness Rating: 4.

..... \$.....

23

JK CATTLE CO SPECULATOR S551 (U) (P)

Ultrablack

ID. QLL21U5551 DOB. 26/8/2021 9% CONTENT COAT. ED/e DAM DATA. 10 CALVES, 357 DAY ACI

PAPA EQUATOR 2928 (P)
ARDROSSAN EQUATOR A241 (P) (ET)
ARDROSSAN PRINCESS W38 (P) (ET)

SIRE GLENOCH KALLANGUR K112 (P)

TUWHARETOA REGENT D145 (P)
GLENOCH FLOWER G72 (P)
GLENOCH FLOWER B133 (P)

SANDON REAGAN C18 (P) (AI)
GLENOCH JK EVER READY E502 (P)
GLENOCH JK MYTH C502 (P) (AI)

DAM GLENOCH JK FLOWER G520 (P)

GLENOCH ZORTEX Z150 (P) (AI)
GLENOCH JK FLOWER B203 (P)
GLENOCH RED FLOWER MANSO Y4 (P) (ET)

| STRUCTURE | | | | |
|-------------|---|---|---|---|
| CLAW | F | 6 | R | 6 |
| ANGLE | F | 6 | R | 6 |
| REAR LEG | S | 6 | H | 6 |
| TEMPERAMENT | 1 | | | |

June 2023 Brangus BREEDPLAN

| | GL | BW | 200 | 400 | 600 | MCW | MILK | SS |
|------|------|------|------|------|------|------|-------|-------|
| EBV | -0.5 | +1.9 | +14 | +30 | +35 | +39 | +1 | +1.2 |
| RANK | 65% | 95% | 30% | 25% | 20% | 10% | 10% | 25% |
| ACC | 43% | 76% | 67% | 66% | 63% | 48% | 50% | 72% |
| | CW | EMA | RIB | RUMP | RBV | IMF | \$EXP | \$DOM |
| EBV | +15 | +0.4 | +1.7 | +2.0 | -1.3 | +1.3 | \$20 | \$25 |
| RANK | 35% | 90% | 5% | 5% | 99% | 1% | 45% | 30% |
| ACC | 54% | 44% | 54% | 54% | 44% | 43% | | |

Traits Observed: BWT,200WT,400WT(x2),SS,FAT,EMA,IMF

If you are chasing high marbling – top 1%, phenotype, proven fertility and a splash of Indicus, this is your bull. His mother will have her 11th calf for us this spring, and could very much define her as a good old stick. A very nice bull! Homozygous Polled. Tenderness Rating: 9.

..... \$.....



2023 SALE BULLS



24

JK CATTLE CO SINCERE S505 (U) (P)*Ultrablack*

ID. QLL21US505

DOB. 5/8/2021

19% CONTENT

COAT. ED/ED

DAM DATA. 1 CALF

TE MANIA AMBASSADOR A134 (P)
TUWHARETOA REGENT D145 (P)
LAWSON'S HENRY VIII Y5 (P)

SUHN'S NEXT STEP 331R7 (P)
TRIPLE B LAMONT L594 (P) (ET)
TRIPLE B B217 (P)

SIRE GLENOCH HINMAN H221 (P) (AI)**DAM JK CATTLE CO LADY FLOWER Q511 (P)**

HA PROGRAM 5652 (P) (ET)
GLENOCH FLOWER D80 (P) (AI)
GLENOCH FLOWER B154 (P)

NINDOOINBAH F707 (P) (ET)
GLENOCH JK LADY FLOWER M532 (P)
GLENOCH JK LADY FLOWER G528 (S)

| STRUCTURE | | | | |
|-------------|---|---|---|---|
| CLAW | F | 4 | R | 6 |
| ANGLE | F | 6 | R | 6 |
| REAR LEG | S | 7 | H | 6 |
| TEMPERAMENT | | | | 1 |

June 2023 Brangus BREEDPLAN

| | GL | BW | 200 | 400 | 600 | MCW | MILK | SS |
|------|------|------|-----|-----|-----|-----|------|------|
| EBV | -1.2 | -0.2 | +10 | +17 | +20 | +15 | -3 | +1.5 |
| RANK | 25% | 55% | 50% | 60% | 50% | 55% | 65% | 20% |
| ACC | 42% | 74% | 65% | 63% | 61% | 47% | 35% | 69% |

| | CW | EMA | RIB | RUMP | RBV | IMF | \$EXP | \$DOM |
|------|-----|------|------|------|------|------|-------|-------|
| EBV | +9 | +0.3 | +0.4 | +0.4 | -0.3 | +0.8 | \$16 | \$22 |
| RANK | 65% | 90% | 30% | 35% | 95% | 5% | 60% | 40% |
| ACC | 52% | 44% | 55% | 55% | 45% | 43% | | |

Traits Observed: BWT,200WT,400WT(x2),SS,FAT,EMA,IMF

A nicely balanced Ultrablack type, showing length and a very correct underline. He's by the high marbling sire Hinman, and his data also suggests he's suitable for heifers. His sire and maternal grandsire are well proven for calving ease. Homozygous Polled. Tenderness Rating: 7.

\$

CROSBY
CATTLE
TRANSPORT

Transporting cattle for over 30 years

Contact Lionel Crosby on 0428 762 755



25

JK CATTLE CO SPLENDID S562 (U) (P)*Ultrablack*

ID. QLL21US562

DOB. 6/9/2021

16% CONTENT

COAT. ED/ED

DAM DATA. 1 CALF

TUWHARETOA REGENT D145 (P)
GLENOCH HINMAN H221 (P) (AI)
GLENOCH FLOWER D80 (P) (AI)

SUHN'S NEXT STEP 331R7 (P)
TRIPLE B LAMONT L594 (P) (ET)
TRIPLE B B217 (P)

SIRE JK CATTLE CO QUAKER Q615 (P)**DAM JK CATTLE CO BEAUTY Q540 (P)**

S A V THUNDERBIRD 9061 (P)
GLENOCH-JK WILCOOLA K609 (P)
GLENOCH-JK WILCOOLA H631 (P)

NINDOOINBAH F707 (P) (ET)
GLENOCH JK BEAUTY N503 (P)
GLENOCH BEAUTY E275 (P)

| STRUCTURE | | | | |
|-------------|---|---|---|---|
| CLAW | F | 7 | R | 6 |
| ANGLE | F | 6 | R | 6 |
| REAR LEG | S | 7 | H | 6 |
| TEMPERAMENT | | | | 1 |

June 2023 Brangus BREEDPLAN

| | GL | BW | 200 | 400 | 600 | MCW | MILK | SS |
|------|------|------|-----|-----|-----|-----|------|------|
| EBV | -1.5 | +1.3 | +18 | +30 | +36 | +36 | -1 | +0.0 |
| RANK | 15% | 90% | 15% | 25% | 15% | 15% | 30% | 70% |
| ACC | 37% | 72% | 63% | 62% | 59% | 44% | 29% | 68% |

| | CW | EMA | RIB | RUMP | RBV | IMF | \$EXP | \$DOM |
|------|-----|------|------|------|------|------|-------|-------|
| EBV | +18 | +1.0 | +0.3 | +0.4 | +0.0 | +0.3 | \$23 | \$24 |
| RANK | 20% | 60% | 35% | 35% | 80% | 25% | 35% | 35% |
| ACC | 50% | 42% | 52% | 52% | 43% | 41% | | |

Traits Observed: BWT,200WT,400WT(x2),SS,FAT,EMA,IMF

An Ultrablack type, thick through his topline and expressive throughout. His balanced EBVs complement his balanced phenotype. His maternal grandmother, N503, has been a high performing cow for us and is about to have her fifth calf this spring. Homozygous Polled. Tenderness Rating: 10.

\$



26

JK CATTLE CO SIMULCAST S506 (U) (P)

Ultrablack

ID. QLL21U506 DOB. 7/8/2021 22% CONTENT COAT. ED/ED DAM DATA. 10 CALVES, 365 DAY ACI

CRC NORTH STAR 9U8W3 (P)
BELVIEW FLYNN M012 (P) (AI)
BELVIEW CAITRINA (P)TE MANIA AMBASSADOR A134 (P)
TUWHARETOA REGENT D145 (P)
LAWSON'S HENRY VIII Y5 (P)

SIRE BELVIEW POSIEDON P052 (P)

DAM GLENOCH FLOWER G113 (P)

CSONKA OF BRINKS 30R4 (P)
BELVIEW ZENA (P) (ET)
BELVIEW PERRI (P)B/R NEW FRONTIER 095 (P) (ET)
GLENOCH FLOWER Z146 (P)
GLENOCH FLOWER T66 (P)

| STRUCTURE | | | | |
|-------------|---|---|---|---|
| CLAW | F | 7 | R | 6 |
| ANGLE | F | 7 | R | 6 |
| REAR LEG | S | 7 | H | 7 |
| TEMPERAMENT | | 1 | | |

June 2023 Brangus BREEDPLAN

| | GL | BW | 200 | 400 | 600 | MCW | MILK | SS |
|------|------|------|-----|-----|-----|-----|------|------|
| EBV | -0.4 | +3.0 | +15 | +29 | +40 | +33 | +2 | +2.2 |
| RANK | 70% | 99% | 25% | 25% | 10% | 20% | 5% | 5% |
| ACC | 41% | 74% | 66% | 65% | 62% | 47% | 38% | 70% |

| | CW | EMA | RIB | RUMP | RBV | IMF | \$EXP | \$DOM |
|------|-----|------|------|------|------|------|-------|-------|
| EBV | +16 | +2.1 | +0.1 | +0.0 | +0.5 | +0.5 | \$26 | \$27 |
| RANK | 30% | 15% | 50% | 60% | 30% | 10% | 25% | 25% |
| ACC | 53% | 44% | 52% | 52% | 43% | 42% | | |

Traits Observed: BWT,200WT,400WT(x2),SS,FAT,EMA,IMF

Plenty of length, balanced EBVs and presence to this bull. His mother has certainly proven herself. . Homozygous Polled. Tenderness Rating: 6.

\$

27

WITHDRAWN

28

JK CATTLE CO SOPRANO S497 (U) (P)

Ultrablack

ID. QLL21U5497 DOB. 29/7/2021 9% CONTENT COAT. ED/ED DAM DATA. 2 CALVES, 375 DAY ACI

TE MANIA AMBASSADOR A134 (P)
TUWHARETOA REGENT D145 (P)
LAWSON'S HENRY VIII Y5 (P)COLE OF BRINKS 14P3 (P)
NINDOOINBAH F707 (P) (ET)
MS BRINKS SONAR 596R5 (P)

SIRE GLENOCH HINMAN H221 (P) (AI)

DAM JK CATTLE CO FLOWER Q528 (P)

HA PROGRAM 5652 (P) (ET)
GLENOCH FLOWER D80 (P) (AI)
GLENOCH FLOWER B154 (P)ARDROSSAN EQUATOR A241 (P) (ET)
GLENOCH FLOWER H311 (P)
GLENOCH FLOWER C66 (P)

| STRUCTURE | | | | |
|-------------|---|---|---|---|
| CLAW | F | 7 | R | 6 |
| ANGLE | F | 6 | R | 7 |
| REAR LEG | S | 6 | H | 6 |
| TEMPERAMENT | | 1 | | |

June 2023 Brangus BREEDPLAN

| | GL | BW | 200 | 400 | 600 | MCW | MILK | SS |
|------|------|------|-----|-----|-----|-----|------|------|
| EBV | -1.4 | +3.3 | +26 | +38 | +48 | +45 | +2 | +2.8 |
| RANK | 15% | 99% | 5% | 10% | 5% | 5% | 5% | 1% |
| ACC | 42% | 74% | 65% | 63% | 61% | 47% | 36% | 68% |

| | CW | EMA | RIB | RUMP | RBV | IMF | \$EXP | \$DOM |
|------|-----|------|------|------|------|------|-------|-------|
| EBV | +19 | +0.2 | +0.8 | +0.9 | -0.9 | +1.2 | \$27 | \$33 |
| RANK | 20% | 95% | 15% | 15% | 99% | 1% | 25% | 15% |
| ACC | 52% | 44% | 54% | 54% | 45% | 43% | | |

Traits Observed: BWT,200WT,400WT(x2),SS,FAT,EMA,IMF

S497 is by the well-performed Angus sire Hinman, and he is more of an Angus type with a splash of Indicus. This bull shows length, depth of body and was a stand out as a young calf. Plenty of IMF, top 1%. A really nice bull. Homozygous Polled. Tenderness Rating: 10.

\$

29

JK CATTLE CO SONOROUS S523 (P)

Brangus

ID. QLL21F5523 DOB. 14/8/2021 32% CONTENT COAT. ED/ED DAM DATA. 4 CALVES, 381 DAY ACI

CSONKA OF BRINKS 30R4 (P)
TELPARA HILLS MUNDINE 820J2 (P) (AI)
TELPARA HILLS MISS L11 820D4 (P)COLE OF BRINKS 14P3 (P)
NINDOOINBAH F707 (P) (ET)
MS BRINKS SONAR 596R5 (P)

SIRE BIMBADEEN Q PICUS P108 (P)

DAM GLENOCH JK PERFECTION N529 (P)

DOONSIDE DR MOK (S)
BIMBADEEN Q G0158 (P)
BIMBADEEN Q R608 (P)SANDON ADMIRAL D13 (P)
SANDON PERFECTION F48 (P)
SANDON PERFECTION V27 (P)

| STRUCTURE | | | | |
|-------------|---|---|---|---|
| CLAW | F | 7 | R | 6 |
| ANGLE | F | 6 | R | 7 |
| REAR LEG | S | 7 | H | 6 |
| TEMPERAMENT | | 1 | | |

June 2023 Brangus BREEDPLAN

| | GL | BW | 200 | 400 | 600 | MCW | MILK | SS |
|------|------|------|-----|-----|-----|-----|------|------|
| EBV | -0.5 | +0.7 | +10 | +14 | +21 | +16 | -1 | +1.3 |
| RANK | 65% | 80% | 50% | 70% | 45% | 55% | 30% | 25% |
| ACC | 45% | 77% | 69% | 67% | 65% | 51% | 44% | 71% |

| | CW | EMA | RIB | RUMP | RBV | IMF | \$EXP | \$DOM |
|------|-----|------|------|------|------|------|-------|-------|
| EBV | +11 | +2.3 | +0.3 | +0.4 | +0.9 | -0.1 | \$18 | \$22 |
| RANK | 55% | 10% | 35% | 35% | 10% | 95% | 50% | 40% |
| ACC | 56% | 48% | 57% | 57% | 48% | 47% | | |

Traits Observed: BWT,200WT,400WT(x2),SS,FAT,EMA,IMF

A nice broad head on this fella, he catches your eye. He's balanced, made smooth through his front end, with an ideal head carriage and a very tidy underline. Homozygous Polled. Tenderness Rating: 4.

\$



30

JK CATTLE CO SCRIMMAGE S659^{SV}

Angus

ID. QLL21S659 HBR DOB. 12/8/2021 AMFU,CAFU,DDFU,NHFU DAM DATA. 9 CALVES, 365 DAY ACI

S A V HERITAGE 6295*

TE MANIA AMBASSADOR A134^{SV}

S A V HARVESTOR 0338*

TUWHARETOA REGENT D145^{PV}

S A V EMBLYNETTE 7749*

LAWSON'S HENRY VIII Y5^{SV}SIRE SUGARLOAF HARVESTOR N174^{SV}

DAM GLENOCH LASSIE H261*

SYDGEN C C & 7*

ARDROSSAN ADMIRAL A2^{PV}SUGARLOAF CLEO J15^{SV}

GLENOCH LASSIE E68*

SUGARLOAF CLEO D84^{PV}

GLENOCH LASSIE T84*

| STRUCTURE | | | | |
|-------------|---|---|---|---|
| CLAW | F | 6 | R | 6 |
| ANGLE | F | 6 | R | 6 |
| REAR LEG | S | 6 | H | 6 |
| TEMPERAMENT | 1 | | | |

Mid June 2023 TransTasman Angus Cattle Evaluation

| TACE | CED | CEM | GL | BW | 200 | 400 | 600 | MCW | MILK | DC | SS | DOC |
|------|------|------|------|------|-----|-----|-----|-----|------|------|------|-----|
| EBV | +8.3 | +0.2 | -5.4 | +2.6 | +41 | +77 | +92 | +74 | +19 | -7.3 | +2.6 | +20 |
| RANK | 9% | 76% | 39% | 20% | 86% | 84% | 92% | 87% | 36% | 4% | 29% | 49% |
| ACC | 57% | 48% | 71% | 74% | 72% | 71% | 71% | 68% | 62% | 39% | 73% | 37% |

| | CW | EMA | RIB | RUMP | RBV | IMF | NFI-F | CLAW SET | FOOT ANGLE | LEG ANGLE | \$ABI | \$ABI-L |
|------|-----|------|------|------|------|------|-------|----------|------------|-----------|-------|---------|
| EBV | +52 | +3.8 | +3.3 | +3.7 | -0.2 | +2.2 | 0.4 | +0.90 | +0.96 | +1.02 | \$202 | \$342 |
| RANK | 87% | 79% | 3% | 4% | 85% | 46% | 77% | 62% | 47% | 45% | 48% | 53% |
| ACC | 61% | 60% | 62% | 62% | 56% | 64% | 50% | 74% | 74% | 70% | | |

Traits Observed: CE,BWT,200WT,400WT(x2),SC,Scan(EMA,Rib,Rump,IMF),Structure(Claw Set x 1, Foot Angle x 1),Genomics

A well shaped bull, suitable for heifers. The Lassie cow-line are like gold if you can find them, as they are known for doing ability and fertility. This guy is no exception with fat coverage and days to calving ranking in the top 4%, backed up by his dam's proven ACI record. He's scored a solid set of 6s for structure.

..... \$.....



31

JK CATTLE CO SHATTER PROOF S693^{SV}

Angus

ID. QLL21S693 HBR DOB. 31/8/2021 AMFU,CAFU,DDFU,NHFU DAM DATA. 8 CALVES, 369 DAY ACI

S A V HERITAGE 6295*

PAPA EQUATOR 2928*

S A V HARVESTOR 0338*

ARDROSSAN EQUATOR A241^{PV}

S A V EMBLYNETTE 7749*

ARDROSSAN PRINCESS W38^{PV}SIRE SUGARLOAF HARVESTOR N174^{SV}DAM GLENOCH FLOWER J204^{SV}

SYDGEN C C & 7*

BOOROOMOOKA THEO T030^{SV}SUGARLOAF CLEO J15^{SV}

GLENOCH FLOWER Z71*

SUGARLOAF CLEO D84^{PV}

GLENOCH FLOWER V12*

| STRUCTURE | | | | |
|-------------|---|---|---|---|
| CLAW | F | 7 | R | 6 |
| ANGLE | F | 6 | R | 6 |
| REAR LEG | S | 6 | H | 6 |
| TEMPERAMENT | 1 | | | |

Mid June 2023 TransTasman Angus Cattle Evaluation

| TACE | CED | CEM | GL | BW | 200 | 400 | 600 | MCW | MILK | DC | SS | DOC |
|------|------|------|------|------|-----|-----|-----|------|------|------|------|-----|
| EBV | -3.7 | +1.3 | -5.4 | +6.5 | +44 | +76 | +98 | +101 | +13 | -7.3 | +0.9 | +23 |
| RANK | 89% | 67% | 39% | 92% | 77% | 86% | 85% | 48% | 82% | 4% | 89% | 34% |
| ACC | 57% | 47% | 72% | 74% | 73% | 71% | 72% | 69% | 63% | 40% | 74% | 37% |

| | CW | EMA | RIB | RUMP | RBV | IMF | NFI-F | CLAW SET | FOOT ANGLE | LEG ANGLE | \$ABI | \$ABI-L |
|------|-----|------|------|------|------|------|-------|----------|------------|-----------|-------|---------|
| EBV | +55 | +6.1 | -3.3 | -5.1 | +2.1 | +0.7 | 0.17 | +0.96 | +0.90 | +0.90 | \$170 | \$296 |
| RANK | 81% | 51% | 98% | 99% | 1% | 86% | 49% | 73% | 32% | 12% | 79% | 81% |
| ACC | 62% | 61% | 63% | 63% | 57% | 65% | 52% | 72% | 72% | 67% | | |

Traits Observed: CE,BWT,200WT,400WT(x2),SC,Scan(EMA,Rib,Rump,IMF),Structure(Claw Set x 1, Foot Angle x 1),Genomics

S693 shows length and muscle expression very similar to his sire. His mother has been a great cow for us. We have been A.I.ing some of our cows to another of her sons, by Beast Mode.

..... \$.....



For over 65 years Alands Accountants have been providing business services to rural Queensland.

With our origins in Dalby, Alands now service clients in and around major regional areas such as Rockhampton, Longreach, Goondiwindi and Roma.

We specialise in family cattle and grain production businesses, and our team offers comprehensive solutions for complex agricultural issues.

Level 15, 300 Queen Street, Brisbane
07 3211 8560 | info@alands.com.au
www.alands.com.au



Dan Sheahan
CA, Director



Stephanie Aland
CA, Director



Alistair Carlisle
CA, Director

To find out how we can help your business, contact our friendly staff or catch up with Dan Sheahan at the bull sale.



32

JK CATTLE CO SHERIDAN S602^{SV}

Angus

ID. QLL21S602 HBR DOB. 26/7/2021 AMFU,CAFU,DDFU,NHFU DAM DATA. 2 CALVES, 415 DAY ACI

TE MANIA AMBASSADORA A134^{SV}
 TUWHARETOA REGENT D145^{SV}
 LAWSONS HENRY VIII Y5^{SV}

PATHFINDER GENESIS G357^{PV}
 CHILTERN PARK NOAH N2^{PV}
 CHILTERN PARK L18^{PV}

SIRE GLENOCH HINMAN H221^{SV}DAM JK CATTLE CO ANN Q659[#]

HA PROGRAM 5652[#]
 GLENOCH FLOWER D80^{SV}
 GLENOCH FLOWER B154[#]

GLENOCH LANNAM L095^{SV}
 GLENOCH-JK ANN N662[#]
 GLENOCH-JK ANN L662[#]

| STRUCTURE | | | | |
|-------------|---|---|---|---|
| CLAW | F | 6 | R | 6 |
| ANGLE | F | 6 | R | 6 |
| REAR LEG | S | 6 | H | 6 |
| TEMPERAMENT | 1 | | | |

Mid June 2023 TransTasman Angus Cattle Evaluation

| TACE | CED | CEM | GL | BW | 200 | 400 | 600 | MCW | MILK | DC | SS | DOC |
|------|------|------|------|------|------|------|-------|----------|------------|-----------|-------|---------|
| EBV | +8.3 | +5.8 | -7.9 | +1.6 | +57 | +102 | +136 | +130 | +24 | -4.9 | +1.7 | +17 |
| RANK | 9% | 21% | 10% | 9% | 19% | 19% | 15% | 11% | 6% | 42% | 64% | 64% |
| ACC | 57% | 47% | 70% | 74% | 73% | 71% | 72% | 69% | 64% | 42% | 74% | 45% |
| | CW | EMA | RIB | RUMP | RBV | IMF | NFI-F | CLAW SET | FOOT ANGLE | LEG ANGLE | \$ABI | \$ABI-L |
| EBV | +85 | +6.2 | +0.1 | -1.7 | +0.1 | +3.3 | -0.23 | +1.04 | +1.12 | +1.00 | \$220 | \$403 |
| RANK | 8% | 49% | 45% | 74% | 71% | 20% | 9% | 85% | 81% | 38% | 28% | 10% |
| ACC | 64% | 63% | 65% | 65% | 59% | 67% | 56% | 71% | 71% | 67% | | |

Traits Observed: CE,BWT,200WT,400WT(x2),SC,Scan(EMA,Rib,Rump,IMF),Structure(Claw Set x 1, Foot Angle x 1),Genomics

A great data set here, and possibly one of the last direct sons of Hinman to be offered. This fella is highly suitable for heifers, with fast growth and a balance of traits elsewhere. He was our backup heifer bull if we needed him, so we do know he passed morphology as a yearling too. A nice bull mid-way through the catalogue.

..... \$.....



33

JK CATTLE CO STANTON S609^{SV}

Angus

ID. QLL21S609 HBR DOB. 29/7/2021 AMFU,CAFU,DDFU,NHFU DAM DATA. 2 CALVES, 367 DAY ACI

O C C PAXTON 730P[#]
 COLEMAN CHARLO 0256^{PV}
 BOHI ABIGALE 6014[#]

MATAURI REALITY 839[#]
 GLENOCH-JK MAKAHU M602^{SV}
 GLENOCH-JK ANN K615^{SV}

SIRE S A V RAINFALL 6846^{PV}DAM JK CATTLE CO FLOWER Q626[#]

S A V 8180 TRAVELER 004[#]
 S A V BLACKCAP MAY 4136[#]
 S A V MAY 2397[#]

ARDROSSAN EQUATOR A241^{PV}
 GLENOCH FLOWER J319[#]
 GLENOCH FLOWER C183[#]

| STRUCTURE | | | | |
|-------------|---|---|---|---|
| CLAW | F | 6 | R | 6 |
| ANGLE | F | 6 | R | 6 |
| REAR LEG | S | 7 | H | 6 |
| TEMPERAMENT | 1 | | | |

Mid June 2023 TransTasman Angus Cattle Evaluation

| TACE | CED | CEM | GL | BW | 200 | 400 | 600 | MCW | MILK | DC | SS | DOC |
|------|------|------|------|------|------|------|-------|----------|------------|-----------|-------|---------|
| EBV | +6.0 | +7.4 | -9.4 | +3.7 | +56 | +102 | +126 | +118 | +15 | -4.6 | +2.2 | +22 |
| RANK | 23% | 10% | 4% | 41% | 22% | 18% | 30% | 22% | 69% | 51% | 44% | 38% |
| ACC | 56% | 43% | 82% | 74% | 72% | 71% | 71% | 68% | 62% | 35% | 74% | 42% |
| | CW | EMA | RIB | RUMP | RBV | IMF | NFI-F | CLAW SET | FOOT ANGLE | LEG ANGLE | \$ABI | \$ABI-L |
| EBV | +68 | +5.2 | -2.8 | -4.2 | +0.8 | +1.7 | -0.09 | +0.68 | +0.94 | +1.02 | \$206 | \$377 |
| RANK | 44% | 62% | 95% | 96% | 28% | 61% | 18% | 18% | 42% | 45% | 43% | 25% |
| ACC | 62% | 62% | 63% | 62% | 57% | 65% | 48% | 75% | 75% | 64% | | |

Traits Observed: GL,CE,BWT,200WT,400WT(x2),SC,Scan(EMA,Rib,Rump,IMF),Structure(Claw Set x 1, Foot Angle x 1),Genomics

Great calving ease, fast growth and phenotype to boot. A cracking bull and the first calf for a young cow that rejoined very well. In his pedigree are Makahu, A241, Traveler 004, Net Worth – they're all bulls that have bred on great types.

..... \$.....



34

JK CATTLE CO SENATOR S675^{SV}

Angus

ID. QLL21S675 HBR DOB. 24/8/2021 AMFU,CAFU,DDFU,NHFU DAM DATA. 3 CALVES, 375 DAY ACI

S A V HERITAGE 6295[#]MATAURI REALITY 839[#]S A V HARVESTOR 0338[#]GLENOCH-JK MAKAHU M602^{SV}S A V EMBLYNETTE 7749[#]GLENOCH-JK ANN K615^{SV}SIRE SUGARLOAF HARVESTOR N174^{SV}DAM GLENOCH-JK FLOWER P648[#]SYDGEN C C & 7[#]GLENOCH GALLEON G57^{SV}SUGARLOAF CLEO J15^{SV}GLENOCH-JK FLOWER J646[#]SUGARLOAF CLEO D84^{PV}GLENOCH-JK FLOWER F604[#]

| STRUCTURE | | | | |
|-------------|---|---|---|---|
| CLAW | F | 6 | R | 6 |
| ANGLE | F | 7 | R | 7 |
| REAR LEG | S | 6 | H | 6 |
| TEMPERAMENT | 1 | | | |

Mid June 2023 TransTasman Angus Cattle Evaluation

| TACE | CED | CEM | GL | BW | 200 | 400 | 600 | MCW | MILK | DC | SS | DOC |
|------|------|------|------|------|------|------|-------|----------|------------|-----------|-------|---------|
| EBV | +2.6 | -0.5 | -0.3 | +5.6 | +53 | +97 | +122 | +89 | +24 | -5.8 | +2.1 | +23 |
| RANK | 52% | 81% | 97% | 81% | 34% | 32% | 38% | 68% | 8% | 21% | 48% | 35% |
| ACC | 54% | 42% | 68% | 73% | 72% | 70% | 71% | 67% | 60% | 34% | 72% | 35% |
| | | | | | | | | | | | | |
| | CW | EMA | RIB | RUMP | RBV | IMF | NFI-F | CLAW SET | FOOT ANGLE | LEG ANGLE | \$ABI | \$ABI-L |
| EBV | +80 | +6.1 | -0.1 | +0.1 | +0.8 | +0.8 | -0.26 | +0.78 | +0.88 | +1.10 | \$222 | \$360 |
| RANK | 14% | 51% | 50% | 42% | 28% | 84% | 7% | 36% | 27% | 71% | 26% | 37% |
| ACC | 60% | 59% | 61% | 61% | 55% | 62% | 47% | 72% | 72% | 67% | | |

Traits Observed: CE,BWT,200WT,400WT(x2),SC,Scan(EMA,Rib,Rump,IMF),Structure(Claw Set x 1, Foot Angle x 1),Genomics

A nice bull, quite balanced across every trait. His maternal grandmother J646 was a very good type, and her sire G57 was purchased by Brown Mountain Angus, and went on to breed very functional and easy doing cattle.

\$.....

35

JK CATTLE CO SHEIKH S696^{SV}

Angus

ID. QLL21S696 HBR DOB. 31/8/2021 AMFU,CAFU,DDFU,NHFU DAM DATA. 4 CALVES, 364 DAY ACI

PATHFINDER GENESIS G357^{PV}ARDROSSAN EQUATOR A241^{PV}CHILTERN PARK NOAH N2^{PV}GLENOCH KALLANGUR K112^{PV}CHILTERN PARK L18^{PV}GLENOCH FLOWER G72^{SV}SIRE JK CATTLE CO QEDAR Q653^{SV}DAM GLENOCH-JK FLOWER N658^{SV}GLENOCH LAUROY L211^{SV}GLENOCH D.J.Y D58^{SV}GLENOCH-JK FLOWER N686[#]GLENOCH-JK FLOWER F626[#]GLENOCH FLOWER G113[#]GLENOCH FLOWER A261[#]

| STRUCTURE | | | | |
|-------------|---|---|---|---|
| CLAW | F | 6 | R | 6 |
| ANGLE | F | 6 | R | 7 |
| REAR LEG | S | 6 | H | 6 |
| TEMPERAMENT | 1 | | | |

Mid June 2023 TransTasman Angus Cattle Evaluation

| TACE | CED | CEM | GL | BW | 200 | 400 | 600 | MCW | MILK | DC | SS | DOC |
|------|------|-------|------|------|------|------|-------|----------|------------|-----------|-------|---------|
| EBV | +0.6 | +2.1 | -2.9 | +6.1 | +56 | +96 | +118 | +105 | +19 | -4.8 | +1.6 | +21 |
| RANK | 68% | 59% | 78% | 88% | 23% | 34% | 47% | 41% | 33% | 45% | 68% | 45% |
| ACC | 52% | 40% | 66% | 71% | 70% | 68% | 68% | 65% | 58% | 32% | 71% | 29% |
| | | | | | | | | | | | | |
| | CW | EMA | RIB | RUMP | RBV | IMF | NFI-F | CLAW SET | FOOT ANGLE | LEG ANGLE | \$ABI | \$ABI-L |
| EBV | +77 | +12.4 | -1.1 | -1.6 | +1.8 | +0.6 | 0.36 | +0.74 | +0.96 | +0.96 | \$224 | \$368 |
| RANK | 20% | 4% | 73% | 73% | 2% | 88% | 73% | 28% | 47% | 26% | 24% | 31% |
| ACC | 58% | 57% | 59% | 60% | 52% | 62% | 48% | 70% | 70% | 66% | | |

Traits Observed: CE,BWT,200WT,400WT(x2),SC,Scan(EMA,Rib,Rump,IMF),Structure(Claw Set x 1, Foot Angle x 1),Genomics

A quality bull with big EMA. His mother is a very nice type, and she is starting to prove herself for fertility. There's lots to like about the K112 daughters.

\$.....

36

JK CATTLE CO SABRE S625^{SV}

Angus

ID. QLL21S625 HBR DOB. 5/8/2021 AMFU,CAFU,DDFU,NHFU DAM DATA. 9 CALVES, 362 DAY ACI

CONNEALY IN SURE 8524[#]CONNEALY IMPRESSION[#]G A R SURE FIRE^{SV}CONNEALY SENSATION 964^{PV}CHAIR ROCK 5050 G A R 8086[#]PRETTY PELL OF CONAMGA 964[#]SIRE G A R RELIANT^{PV}DAM GLENOCH-JK FLOWER H662[#]B/R DESTINATION 727-928[#]TE MANIA INFINITY 04 379 AB[#]G A R DESTINATION N244[#]GLENOCH-JK FLOWER F604[#]G A R PREDESTINED 3279[#]GLENOCH-JB FLOWER D232[#]

| STRUCTURE | | | | |
|-------------|---|---|---|---|
| CLAW | F | 7 | R | 6 |
| ANGLE | F | 6 | R | 6 |
| REAR LEG | S | 6 | H | 6 |
| TEMPERAMENT | 1 | | | |

Mid June 2023 TransTasman Angus Cattle Evaluation

| TACE | CED | CEM | GL | BW | 200 | 400 | 600 | MCW | MILK | DC | SS | DOC |
|------|------|------|------|------|------|------|-------|----------|------------|-----------|-------|---------|
| EBV | -4.1 | -2.0 | -2.8 | +5.9 | +55 | +100 | +125 | +92 | +17 | -4.6 | +2.3 | +21 |
| RANK | 90% | 88% | 79% | 85% | 29% | 24% | 32% | 63% | 52% | 51% | 40% | 42% |
| ACC | 58% | 47% | 84% | 75% | 74% | 72% | 73% | 70% | 65% | 39% | 75% | 49% |
| | | | | | | | | | | | | |
| | CW | EMA | RIB | RUMP | RBV | IMF | NFI-F | CLAW SET | FOOT ANGLE | LEG ANGLE | \$ABI | \$ABI-L |
| EBV | +68 | +2.4 | -0.1 | -0.5 | +0.0 | +2.4 | -0.1 | +0.80 | +1.02 | +0.88 | \$196 | \$319 |
| RANK | 43% | 90% | 50% | 53% | 77% | 41% | 17% | 40% | 62% | 9% | 55% | 69% |
| ACC | 64% | 64% | 65% | 64% | 59% | 67% | 53% | 75% | 75% | 67% | | |

Traits Observed: GL,CE,BWT,200WT,400WT(x2),SC,Scan(EMA,Rib,Rump,IMF),Structure(Claw Set x 1, Foot Angle x 1),Genomics

S625's mother has been one of our best cows and she has certainly proven herself for fertility. This bull is long with fast growth, and a balance of traits elsewhere. He's been picked on a bit by his mates so potentially doesn't present as well as he could, but the genetics and cow performance is there to deliver.

\$.....



Johnson Family • Bookings: Gary 0407 640 289 Rhys 0429 877 175 • Accounts: Lynda 0409 640 112

37

JK CATTLE CO STOCKMAN S620^{SV}

Angus

ID. QLL21S620 HBR DOB. 4/8/2021 AMF,CAF,DDF,NHF,DWF, MAF,MHF,OHF,OSF,RGF DAM DATA. 4 CALVES, 362 DAY ACI

CONNEALY IN SURE 8524*
G A R SURE FIRE^{SV}
CHAIR ROCK 5050 G A R 8086*LT DRIVEN 9087*
GLENOCH KEERA K270^{SV}
GLENOCH FLOWER D80^{SV}SIRE G A R RELIANT^{PV}

DAM GLENOCH-JK JEDDA M638#

B/R DESTINATION 727-928*
G A R DESTINATION N244*
G A R PREDESTINED 3279*GLENOCH GIBRALTER G205^{SV}
GLENOCH-JK JEDDA J643*
GLENOCH JEDDA F252*

| STRUCTURE | | | | |
|-------------|---|---|---|---|
| CLAW | F | 7 | R | 6 |
| ANGLE | F | 6 | R | 6 |
| REAR LEG | S | 6 | H | 6 |
| TEMPERAMENT | 1 | | | |

Mid June 2023 TransTasman Angus Cattle Evaluation

| TACE | CED | CEM | GL | BW | 200 | 400 | 600 | MCW | MILK | DC | SS | DOC |
|------|------|------|------|------|-----|-----|------|-----|------|------|------|-----|
| EBV | +6.3 | +0.8 | -4.6 | +2.6 | +55 | +91 | +121 | +91 | +27 | -3.8 | +1.8 | +18 |
| RANK | 20% | 71% | 52% | 20% | 26% | 47% | 40% | 65% | 3% | 73% | 60% | 57% |
| ACC | 56% | 44% | 83% | 74% | 73% | 71% | 72% | 68% | 62% | 36% | 74% | 45% |

| | CW | EMA | RIB | RUMP | RBV | IMF | NFI-F | CLAW SET | FOOT ANGLE | LEG ANGLE | \$ABI | \$ABI-L |
|------|-----|------|------|------|------|------|-------|----------|------------|-----------|-------|---------|
| EBV | +78 | +8.3 | -2.5 | -4.1 | +1.2 | +2.4 | -0.39 | +0.82 | +1.20 | +1.10 | \$219 | \$356 |
| RANK | 18% | 26% | 93% | 96% | 11% | 41% | 3% | 44% | 91% | 71% | 29% | 41% |
| ACC | 62% | 61% | 63% | 62% | 56% | 65% | 50% | 74% | 74% | 67% | | |

Traits Observed: GL,C,E,BWT,200WT,400WT(x2),SC,Scan(EMA,Rib,Rump,IMF),Structure(Claw Set x 1, Foot Angle x 1),Genomics

Cracking EBVs here, and he really stood out as a calf. Suitable for heifers and he shows an ideal balance of width, depth and length in a moderate frame. A great package in the second half of the sale catalogue.

..... \$.....



38

JK CATTLE CO STEEL S592 (U) (P)

Ultrablack

ID. QLL21US592 DOB. 30/10/2021 9% CONTENT COAT. ED/ED DAM DATA. 2 CALVES, 347 DAY ACI

SYDGEN EXCEED 3223 (P)
SYDGEN ENHANCE (P) (AI)
SYDGEN RITA 2618 (P) (AI)COLE OF BRINKS 14P3 (P)
NINDOOINBAH F707 (P) (ET)
MS BRINKS SONAR 596R5 (P)

SIRE JK CATTLE CO QUALITATIVE Q623 (P)

DAM JK CATTLE CO FLOWER Q533 (P)

MATAURI REALITY 839 (P)
GLENOCH-JK ANN N608 (P)
GLENOCKH-JK ANN J605 (P)GLENOCH GIBRALTER G205 (P)
GLENOCH-JK FLOWER J649 (P)
GLENOCH FLOWER A254 (P) (ET)

| STRUCTURE | | | | |
|-------------|---|---|---|---|
| CLAW | F | 6 | R | 6 |
| ANGLE | F | 6 | R | 7 |
| REAR LEG | S | 7 | H | 6 |
| TEMPERAMENT | 1 | | | |

June 2023 Brangus BREEDPLAN

| | GL | BW | 200 | 400 | 600 | MCW | MILK | SS |
|------|------|------|-----|-----|-----|-----|------|------|
| EBV | -0.8 | +4.1 | +27 | +43 | +53 | +56 | +1 | +2.0 |
| RANK | 45% | 99% | 1% | 5% | 5% | 1% | 10% | 10% |
| ACC | 34% | 68% | 57% | 56% | 53% | 39% | 29% | 28% |

| | CW | EMA | RIB | RUMP | RBV | IMF | \$EXP | \$DOM |
|------|-----|------|------|------|------|------|-------|-------|
| EBV | +22 | +0.9 | -0.3 | -0.4 | +0.2 | +0.2 | \$31 | \$31 |
| RANK | 10% | 65% | 80% | 80% | 60% | 45% | 15% | 15% |
| ACC | 45% | 38% | 46% | 46% | 38% | 35% | | |

Traits Observed: BWT,200WT,400WT(x2),FAT,EMA,IMF

There's plenty of frame and stretch in this bull. His mother has rejoined well on her first rejoin, and as a heifer was a stand out. Homozygous Polled. Tenderness Rating: 4.

..... \$.....

39

JK CATTLE CO STAMINA S585 (P)

Brangus

ID. QLL21RS585 DOB. 12/10/2021 37% CONTENT COAT. ED/ED DAM DATA. 11 CALVES, 366 DAY ACI

CSONKA OF BRINKS 30R4 (P)
TELPARA HILLS MUNDINE 820J2 (P) (AI)
TELPARA HILLS MISS L11 820D4 (P)BONOX 265 (P)
GLENOCH JK DOOMADGIE D501 (P) (AI)
GLENOCH JK DORIS Z524 (P)

SIRE BIMBADEEN Q PICUS P108 (P)

DAM GLENOCH JK LADY FLOWER F506 (P)

DOONSDIE DR MOK (S)
BIMBADEEN Q G0158 (P)
BIMBADEEN Q R608 (P)GLENOCH ASTRONAUT A61 (P) (AI)
GLENOCH JK LADY FLOWER C121 (P)
GLENOCH JK LADY FLOWER A117 (S)

| STRUCTURE | | | | |
|-------------|---|---|---|---|
| CLAW | F | 7 | R | 6 |
| ANGLE | F | 7 | R | 7 |
| REAR LEG | S | 7 | H | 6 |
| TEMPERAMENT | 1 | | | |

June 2023 Brangus BREEDPLAN

| | GL | BW | 200 | 400 | 600 | MCW | MILK | SS |
|------|------|------|-----|-----|-----|-----|------|------|
| EBV | -1.4 | -1.9 | +6 | +13 | +12 | +14 | +2 | -0.8 |
| RANK | 15% | 5% | 70% | 75% | 70% | 60% | 5% | 99% |
| ACC | 43% | 76% | 69% | 66% | 64% | 50% | 46% | 71% |

| | CW | EMA | RIB | RUMP | RBV | IMF | \$EXP | \$DOM |
|------|-----|------|------|------|------|------|-------|-------|
| EBV | +9 | -0.1 | -0.8 | -1.0 | +0.3 | +0.2 | \$12 | \$11 |
| RANK | 65% | 99% | 95% | 95% | 50% | 45% | 75% | 85% |
| ACC | 55% | 45% | 54% | 54% | 45% | 44% | | |

Traits Observed: BWT,200WT,400WT(x2),SS,FAT,EMA,IMF

Check out the fertility data here – 11 calves, 366 ACI. A full brother to this bull sold last year for \$18,000. A very nice, balanced bull, deep sided and suitable for heifers as well. Homozygous Polled. Tenderness Rating: 4.

..... \$.....

40

JK CATTLE CO SPROCKET S569 (P)

Brangus

ID. QLL21RS569 DOB. 15/9/2021 40% CONTENT COAT. ED/ED DAM DATA. 8 CALVES, 416 DAY ACI

CRC NORTH STAR 9U8W3 (P)
BELVIEW FLYNN M012 (P) (AI)
BELVIEW CAITRINA (P)

BONOX 265 (P)
GLENOCH JK DOOMADGIE D501 (P) (AI)
GLENOCH JK DORIS Z524 (P)

SIRE BELVIEW POSIEDON P052 (P)
CSONKA OF BRINKS 30R4 (P)
BELVIEW ZENA (P) (ET)
BELVIEW PERRI (P)

DAM GLENOCH JK LADY FLOWER H513 (P)
S A V 004 DENSITY 4436 (P)
GLENOCH JK LADY FLOWER B121 (P)
GLENOCH LADY REM FLOWER X143 (P) (ET)

| STRUCTURE | | | |
|-------------|---|---|-----|
| CLAW | F | 6 | R 6 |
| ANGLE | F | 6 | R 7 |
| REAR LEG | S | 7 | H 6 |
| TEMPERAMENT | 1 | | |

June 2023 Brangus BREEDPLAN

| | GL | BW | 200 | 400 | 600 | MCW | MILK | SS |
|------|------|------|-----|-----|-----|-----|------|------|
| EBV | -2.0 | -2.2 | +4 | +17 | +17 | +14 | +2 | -0.4 |
| RANK | 5% | 1% | 85% | 60% | 60% | 60% | 5% | 90% |
| ACC | 43% | 75% | 68% | 67% | 64% | 50% | 43% | 70% |

| | CW | EMA | RIB | RUMP | RBV | IMF | \$EXP | \$DOM |
|------|-----|------|------|------|------|------|-------|-------|
| EBV | +12 | +1.5 | -0.6 | -0.7 | +0.8 | +0.2 | \$19 | \$19 |
| RANK | 50% | 35% | 90% | 90% | 15% | 45% | 50% | 50% |
| ACC | 55% | 45% | 54% | 54% | 45% | 44% | | |

Traits Observed: BWT,200WT,400WT(x2),SS,FAT,EMA,IMF

June 2023 Brangus BREEDPLAN

| | GL | BW | 200 | 400 | 600 | MCW | MILK | SS |
|------|------|------|-----|-----|-----|-----|------|------|
| EBV | -0.6 | +0.9 | +10 | +22 | +27 | +25 | -2 | +2.5 |
| RANK | 60% | 85% | 50% | 45% | 30% | 35% | 45% | 5% |
| ACC | 44% | 75% | 68% | 67% | 65% | 51% | 40% | 70% |

| | CW | EMA | RIB | RUMP | RBV | IMF | \$EXP | \$DOM |
|------|-----|------|------|------|------|------|-------|-------|
| EBV | +10 | +0.8 | +0.7 | +0.8 | +0.0 | +0.2 | \$22 | \$28 |
| RANK | 60% | 70% | 15% | 15% | 80% | 45% | 40% | 25% |
| ACC | 56% | 47% | 56% | 56% | 47% | 46% | | |

Traits Observed: BWT,200WT,400WT(x2),SS,FAT,EMA,IMF

S569 is a tidy, well put together bull with an expressive muscle pattern along his top. His EBVs suggest he's suitable over heifers, and his raw birth weight was 3kg below our average for that year. Homozygous Polled. Tenderness Rating: 4.

A well balanced bull, with a tidy, correct underline. He's high ranking for scrotal size, and his dam is well on her way to proving herself for fertility. Homozygous Polled.

41

JK CATTLE CO SPRUCE S573 (P)

Brangus

ID. QLL21FS573 DOB. 16/9/2021 33% CONTENT COAT. ED/ED DAM DATA. 3 CALVES, 374 DAY ACI

CRC NORTH STAR 9U8W3 (P)
BELVIEW FLYNN M012 (P) (AI)
BELVIEW CAITRINA (P)

SUHN'S NEXT STEP 331R7 (P)
TRIPLE B LAMONT L594 (P) (ET)
TRIPLE B B217 (P)

SIRE BELVIEW POSIEDON P052 (P)
CSONKA OF BRINKS 30R4 (P)
BELVIEW ZENA (P) (ET)
BELVIEW PERRI (P)

DAM GLENOCH JK JEDDA P541 (P)
GLENOCH KEERA K270 (P) (AI)
GLENOCH-JK JEDDA M647 (P)
GLENOCH-JK JEDDA J625 (P)

| STRUCTURE | | | |
|-------------|---|---|-----|
| CLAW | F | 6 | R 6 |
| ANGLE | F | 6 | R 7 |
| REAR LEG | S | 7 | H 6 |
| TEMPERAMENT | 1 | | |

June 2023 Brangus BREEDPLAN

| | GL | BW | 200 | 400 | 600 | MCW | MILK | SS |
|------|------|------|-----|-----|-----|-----|------|------|
| EBV | -1.4 | +0.2 | +9 | +17 | +20 | +10 | -1 | +0.9 |
| RANK | 15% | 65% | 55% | 60% | 50% | 70% | 30% | 35% |
| ACC | 42% | 75% | 67% | 66% | 64% | 49% | 36% | 70% |

| | CW | EMA | RIB | RUMP | RBV | IMF | \$EXP | \$DOM |
|------|-----|------|------|------|------|------|-------|-------|
| EBV | +10 | +1.8 | -0.2 | -0.2 | +0.8 | +0.2 | \$18 | \$19 |
| RANK | 60% | 20% | 75% | 70% | 15% | 45% | 50% | 50% |
| ACC | 55% | 46% | 55% | 55% | 46% | 45% | | |

Traits Observed: BWT,200WT,400WT(x2),SS,FAT,EMA,IMF

June 2023 Brangus BREEDPLAN

| | GL | BW | 200 | 400 | 600 | MCW | MILK | SS |
|------|------|------|-----|-----|-----|-----|------|------|
| EBV | -0.5 | +3.8 | +22 | +29 | +37 | +35 | -2 | -0.1 |
| RANK | 65% | 99% | 10% | 25% | 15% | 15% | 45% | 75% |
| ACC | 38% | 73% | 63% | 62% | 59% | 44% | 32% | 68% |

| | CW | EMA | RIB | RUMP | RBV | IMF | \$EXP | \$DOM |
|------|-----|------|------|------|------|------|-------|-------|
| EBV | +15 | +0.9 | +0.2 | +0.3 | +0.1 | +0.4 | \$16 | \$14 |
| RANK | 35% | 65% | 45% | 40% | 70% | 15% | 60% | 70% |
| ACC | 50% | 42% | 52% | 52% | 42% | 40% | | |

Traits Observed: BWT,200WT,400WT(x2),SS,FAT,EMA,IMF

A long bull with a balance of traits, ready to work. Very correct underline. Homozygous Polled. Tenderness Rating: 7.

S538 is a moderate, expressive bull with a big top. He's by the high marbling Angus sire, Hinman, and his mother is already showing her fertility, having re-bred quickly as a first calf heifer. Her mother, G520 has had 10 calves for a 357 ACI, and is also the mother of lot 23. Homozygous Polled. Tenderness Rating: 9.

44

JK CATTLE CO SONIC S539 (P)

Brangus

ID. QLL21RS539 DOB. 21/8/2021 38% CONTENT COAT. ED/ED DAM DATA. 2 CALVES, 344 DAY ACI

CSONKA OF BRINKS 30R4 (P)
TELPARA HILLS MUNDINE 820J2 (P) (AI)
TELPARA HILLS MISS L11 820D4 (P)

SUHN'S NEXT STEP 331R7 (P)
TRIPLE B LAMONT L594 (P) (ET)
TRIPLE B B217 (P)

SIRE BIMBADEEN Q PICUS P108 (P)

DOONSIDE DR MOK (S)
BIMBADEEN Q G0158 (P)
BIMBADEEN Q R608 (P)

DAM JK CATTLE CO EDWINA Q554 (P)

GLENOCH KALLANGUR K112 (P)
GLENOCH JK EDWINA N506 (P)
GLENOCH JK EDWINA H519 (P)

| STRUCTURE | | | | |
|-------------|---|---|---|---|
| CLAW | F | 7 | R | 6 |
| ANGLE | F | 6 | R | 6 |
| REAR LEG | S | 6 | H | 6 |
| TEMPERAMENT | | 1 | | |

June 2023 Brangus BREEDPLAN

| | GL | BW | 200 | 400 | 600 | MCW | MILK | SS |
|------|------|------|-----|-----|-----|-----|------|------|
| EBV | -1.5 | -4.6 | -7 | -12 | -19 | -24 | -4 | -1.3 |
| RANK | 15% | 1% | 99% | 99% | 99% | 99% | 80% | 99% |
| ACC | 42% | 75% | 68% | 66% | 64% | 50% | 41% | 71% |

| | CW | EMA | RIB | RUMP | RBV | IMF | \$EXP | \$DOM |
|------|-----|------|------|------|------|------|-------|-------|
| EBV | -3 | +1.0 | +1.2 | +1.5 | -0.1 | +0.4 | (\$6) | (\$1) |
| RANK | 99% | 60% | 5% | 5% | 90% | 15% | 99% | 99% |
| ACC | 56% | 47% | 56% | 56% | 47% | 45% | | |

Traits Observed: BWT,200WT,400WT,SS,FAT,EMA,IMF

S539 is easy doing and highly suitable over heifers. His mother has rejoined well on her first rejoin. Her mother N506 has so far had 4 calves for a 351 day ACI, while her mother H519 had 5 calves for a 360 day ACI. Homozygous Polled. Tenderness Rating: 9.

\$



FARM Agronomy & Resource Management have been actively working with farmers in Northern NSW and Southern QLD for 13 years.

We are specifically focused on working with clients on making sustainable farming profitable. Services are flexible and we are always utilising that broader objective as a framework for the work we do.

FARM started out mostly working with cropping-focused farmers, but over the past 5-10 years there has certainly been a shift to working with more mixed and livestock-centric farmers.

Creating a profitable farm business that improves the soil and other resources is certainly no prescriptive method, but based on principles.

Ian Moss: 0428 910 073 ian@farmagronomy.com.au

www.farmagronomy.com.au



45

JK CATTLE CO SALUTE S532 (P)

Brangus

ID. QLL21F5532 DOB. 17/8/2021 31% CONTENT COAT. ED/ED DAM DATA. 4 CALVES (TW), 384 DAY ACI

CRC NORTH STAR 9U8W3 (P)
BELVIEW FLYNN M012 (P) (AI)
BELVIEW CAITRINA (P)

COLE OF BRINKS 14P3 (P)
NINDOOINBAH F707 (P) (ET)
MS BRINKS SONAR 596R5 (P)

SIRE BELVIEW POSIEDON P052 (P)

CSONKA OF BRINKS 30R4 (P)
BELVIEW ZENA (P) (ET)
BELVIEW PERRI (P)

DAM GLENOCH JK EVA P520 (P)

CONNEALY SENSATION 964 (P)
GLENOCH EVA H61 (P)
GLENOCH EVA F071 (P)

| STRUCTURE | | | | |
|-------------|---|---|---|---|
| CLAW | F | 6 | R | 6 |
| ANGLE | F | 6 | R | 6 |
| REAR LEG | S | 6 | H | 6 |
| TEMPERAMENT | | 1 | | |

June 2023 Brangus BREEDPLAN

| | GL | BW | 200 | 400 | 600 | MCW | MILK | SS |
|------|------|------|-----|-----|-----|-----|------|------|
| EBV | -0.9 | +3.5 | +22 | +46 | +58 | +49 | +1 | +3.4 |
| RANK | 40% | 99% | 10% | 5% | 1% | 5% | 10% | 1% |
| ACC | 43% | 75% | 67% | 66% | 64% | 50% | 36% | 70% |

| | CW | EMA | RIB | RUMP | RBV | IMF | \$EXP | \$DOM |
|------|-----|------|------|------|------|------|-------|-------|
| EBV | +26 | +4.0 | -0.1 | -0.1 | +1.4 | -0.1 | \$44 | \$45 |
| RANK | 5% | 1% | 65% | 65% | 5% | 95% | 1% | 1% |
| ACC | 55% | 46% | 55% | 55% | 46% | 45% | | |

Traits Observed: BWT,200WT,400WT(x2),SS,FAT,EMA,IMF

There's lots to like about this gentle natured fella, and we used him as a yearling over cows. He should be listed earlier in the catalogue, but he's part of different bull group due to being used as a yearling. Top 1% for both \$Indexes, 600 day weight, EMA and scrotal size, with several other high ranking traits too. His mother P520 is a lovely type, and her mother still going strong with 9 calves and a 365 day ACI. Homozygous Polled. Tenderness Rating: 4.

\$



46

JK CATTLE CO STATUTE S590 (P)

Brangus

ID. QLL21RS590 DOB. 18/10/2021 35% CONTENT COAT. ED/ED DAM DATA. 3 CALVES, 386 DAY ACI

CRC NORTH STAR 9U8W3 (P)
BELVIEW FLYNN M012 (P) (AI)
BELVIEW CAITRINA (P)MC HIGH QUALITY 535Y (P)
BELVIEW FIRST CLASS M177 (P) (ET)
BELVIEW DARCI (P) (ET)

SIRE BELVIEW POSIEDON P052 (P)

DAM GLENOCH JK FLOWER P513 (P)

CSONKA OF BRINKS 30R4 (P)
BELVIEW ZENA (P) (ET)
BELVIEW PERRI (P)GLENOCH JK EVER READY E502 (P)
GLENOCH JK FLOWER G520 (P)
GLENOCH JK FLOWER B203 (P)

| STRUCTURE | | | | |
|-------------|---|---|---|---|
| CLAW | F | 7 | R | 6 |
| ANGLE | F | 6 | R | 7 |
| REAR LEG | S | 7 | H | 6 |
| TEMPERAMENT | | | | 1 |

June 2023 Brangus BREEDPLAN

| | GL | BW | 200 | 400 | 600 | MCW | MILK | SS |
|------|------|------|-----|-----|-----|-----|------|------|
| EBV | -1.1 | -0.1 | +6 | +18 | +22 | +16 | -2 | +1.7 |
| RANK | 30% | 60% | 70% | 55% | 45% | 55% | 45% | 15% |
| ACC | 42% | 75% | 68% | 66% | 64% | 50% | 37% | 69% |

| | CW | EMA | RIB | RUMP | RBV | IMF | \$EXP | \$DOM |
|------|-----|------|------|------|------|------|-------|-------|
| EBV | +10 | +2.0 | +1.6 | +2.0 | +0.0 | +0.5 | \$21 | \$27 |
| RANK | 60% | 15% | 5% | 5% | 80% | 10% | 40% | 25% |
| ACC | 55% | 47% | 57% | 57% | 47% | 47% | | |

Traits Observed: BWT,200WT,400WT(x2),SS,FAT,EMA,IMF

A nicely balanced Brangus bull with length and a big top, he's smooth through the front end and carries his head well. His EBVs offer carcass qualities – he ranks well for EMA, fat and IMF. Go back through the pedigree and you may notice G520 (dam of lot 23) – she's had 10 calves, 357 ACI. Homozygous Polled. Tenderness Rating: 7.

\$.....



47

WITHDRAWN

48

JK CATTLE CO SHREWD S730^{SV}

Angus

ID. QLL21S730 APR DOB. 19/10/2021 AMFU,CAFU,DDC,NHFU DAM DATA. 7 CALVES, 376 DAY ACI

SA V HERITAGE 6295*
SA V HARVESTOR 0338*
SA V EMBLYNETTE 7749*GARDENS HIGHMARK*
GARDENS WAVE*
GREEN GARDEN LADY 6255 S2*SIRE SUGARLOAF HARVESTOR N174^{SV}

DAM GLENOCH-JK ZIGGY J601*

SYDGEN C C & 7*
SUGARLOAF CLEO J15^{SV}
SUGARLOAF CLEO D84^{PV}LAWSON'S HIGH GRADE Z440^{PV}
LAWSON'S HIGH GRADE B1548*
LAWSON'S HENRY VIII Z1126*

| STRUCTURE | | | | |
|-------------|---|---|---|---|
| CLAW | F | 6 | R | 6 |
| ANGLE | F | 7 | R | 6 |
| REAR LEG | S | 6 | H | 6 |
| TEMPERAMENT | | | | 1 |

Mid June 2023 TransTasman Angus Cattle Evaluation

| TACE | CED | CEM | GL | BW | 200 | 400 | 600 | MCW | MILK | DC | SS | DOC |
|------|------|------|------|------|-----|------|------|------|------|------|------|-----|
| EBV | -4.8 | -2.4 | -4.0 | +6.7 | +62 | +104 | +125 | +105 | +18 | -4.9 | +2.4 | +16 |
| RANK | 92% | 90% | 62% | 93% | 7% | 15% | 32% | 41% | 45% | 42% | 36% | 71% |
| ACC | 55% | 44% | 71% | 72% | 73% | 71% | 72% | 68% | 62% | 36% | 68% | 33% |

| | CW | EMA | RIB | RUMP | RBV | IMF | NFI-F | CLAW SET | FOOT ANGLE | LEG ANGLE | \$ABI | \$ABI-L |
|------|-----|------|------|------|------|------|-------|----------|------------|-----------|-------|---------|
| EBV | +76 | +4.9 | -3.9 | -4.3 | +0.7 | +2.0 | -0.8 | +1.00 | +1.12 | +0.94 | \$203 | \$332 |
| RANK | 22% | 66% | 99% | 97% | 34% | 52% | 1% | 79% | 81% | 20% | 48% | 60% |
| ACC | 61% | 61% | 62% | 62% | 56% | 64% | 50% | 67% | 67% | 61% | | |

Traits Observed: CE,BWT,400WT(x2),SC,Scan(EMA,Rib,Rump,IMF),Genomics

S730 is a moderate, meaty fella, ready for some cows. Net feed intake efficiency in the top 1%.

\$.....

49

JK CATTLE CO SCARIFIER S646^{SV}

Angus

ID. QLL21S646 HBR DOB. 8/8/2021 AMFU,CAFU,DDFU,NHFU DAM DATA. 8 CALVES, 367 DAY ACI

CONNEALY IN SURE 8524*
G A R SURE FIRE^{SV}
CHAIR ROCK 5050 G A R 8086*LEACHMAN RIGHT TIME^{SV}
BT RIGHT TIME 24J*
SITZ EVERELDA ENTENSE 1905*SIRE G A R RELIANT^{PV}DAM GLENOCH-JK WILCOOLA J629^{SV}B/R DESTINATION 727-928*
G A R DESTINATION N244*
G A R PREDESTINED 3279*C A FUTURE DIRECTION 5321*
K-BAR WILCOOLA A1*
ARDROSSAN WILCOOLA Q17+95*

| STRUCTURE | | | | |
|-------------|---|---|---|---|
| CLAW | F | 6 | R | 6 |
| ANGLE | F | 6 | R | 6 |
| REAR LEG | S | 5 | H | 6 |
| TEMPERAMENT | | | | 1 |

Mid June 2023 TransTasman Angus Cattle Evaluation

| TACE | CED | CEM | GL | BW | 200 | 400 | 600 | MCW | MILK | DC | SS | DOC |
|------|------|------|------|------|-----|-----|------|-----|------|------|------|-----|
| EBV | -0.3 | +2.3 | -2.4 | +4.3 | +45 | +83 | +106 | +85 | +19 | -4.0 | +1.0 | +16 |
| RANK | 74% | 57% | 84% | 55% | 73% | 72% | 74% | 74% | 35% | 68% | 86% | 70% |
| ACC | 60% | 50% | 83% | 75% | 74% | 72% | 73% | 70% | 65% | 44% | 75% | 51% |

| | CW | EMA | RIB | RUMP | RBV | IMF | NFI-F | CLAW SET | FOOT ANGLE | LEG ANGLE | \$ABI | \$ABI-L |
|------|-----|------|------|------|------|------|-------|----------|------------|-----------|-------|---------|
| EBV | +58 | +4.1 | +2.5 | +3.6 | -0.6 | +2.8 | -0.19 | +0.98 | +0.94 | +0.92 | \$178 | \$301 |
| RANK | 74% | 76% | 7% | 4% | 95% | 31% | 11% | 76% | 42% | 16% | 73% | 79% |
| ACC | 64% | 64% | 65% | 65% | 60% | 68% | 55% | 75% | 75% | 67% | | |

Traits Observed: GL,CE,BWT,200WT,400WT(x2),SC,Scan(EMA,Rib,Rump,IMF),Structure(Claw Set x 1, Foot Angle x 1),Genomics

Another moderate framed, meaty bull who's scored well for structure. He's out of a solid performing cow who has certainly proven herself for fertility. She goes back to the popular donor cow Ardrossan Q17.

\$.....

50

JK CATTLE CO SEMANTIC S673^{SV}

Angus

ID. QLL21S673 HBR DOB. 23/8/2021 AMFU,CAFU,DDFU,NHFU DAM DATA. 2 CALVES, 335 DAY ACI

KAROO W109 DIRECTION Z181^{SV}
CARABAR DOCKLANDS D62^{PV}
CARABAR BLACKCAP MARY B12^{PV}ARDROSSAN EQUATOR A241^{PV}
GLENOCH KALLANGUR K112^{PV}
GLENOCH FLOWER G72^{SV}SIRE KAROO D62 DOCKLANDS N107^{SV}DAM JK CATTLE CO DORIS Q672[#]RENNYLEA EDMUND E11^{PV}
KAROO WILCOOLA L223[#]
KAROO WILCOOLA H257[#]TE MANIA INFINITY 04 379 AB[#]
GLENOCH-JK DORIS F608[#]
GLENOCH-JB DORIS D61[#]

| STRUCTURE | | | | |
|-------------|---|---|---|---|
| CLAW | F | 6 | R | 6 |
| ANGLE | F | 6 | R | 6 |
| REAR LEG | S | 6 | H | 7 |
| TEMPERAMENT | 1 | | | |

Mid June 2023 TransTasman Angus Cattle Evaluation

| TACE | CED | CEM | GL | BW | 200 | 400 | 600 | MCW | MILK | DC | SS | DOC |
|------|------|------|------|------|------|------|-------|----------|------------|-----------|-------|---------|
| EBV | +2.5 | -3.3 | -6.3 | +4.3 | +55 | +92 | +128 | +115 | +15 | -5.2 | +1.2 | +10 |
| RANK | 53% | 93% | 26% | 55% | 29% | 44% | 28% | 26% | 70% | 34% | 81% | 92% |
| ACC | 57% | 48% | 69% | 72% | 72% | 70% | 71% | 67% | 61% | 39% | 73% | 40% |
| | | | | | | | | | | | | |
| | CW | EMA | RIB | RUMP | RBV | IMF | NFI-F | CLAW SET | FOOT ANGLE | LEG ANGLE | \$ABI | \$ABI-L |
| EBV | +80 | +6.5 | -0.5 | -0.7 | +0.6 | +2.1 | 0.38 | +0.70 | +0.92 | +1.14 | \$208 | \$358 |
| RANK | 15% | 46% | 60% | 57% | 40% | 49% | 75% | 21% | 37% | 81% | 41% | 40% |
| ACC | 61% | 60% | 62% | 62% | 56% | 64% | 51% | 70% | 71% | 67% | | |

Traits Observed: CE,BWT,200WT,400WT(x2),SC,Scan(EMA,Rib,Rump,IMF),Structure(Claw Set x 1, Foot Angle x 1),Genomics

S673 is smooth and long made, with good neck extension. He shows similar characteristics to his sire.
His dam has rejoined really well.

..... \$.....

51

JK CATTLE CO SNIPER S706^{PV}

Angus

ID. QLL21S706 HBR DOB. 5/9/2021 AMFU,CAFU,DDFU,NHFU DAM DATA. 7 CALVES, 366 DAY ACI

PATHFINDER GENESIS G357^{PV}
CHILTERN PARK NOAH N2^{PV}
CHILTERN PARK L18^{PV}TUWHARETOA REGENT D145^{PV}
GLENOCH HINMAN H221^{SV}
GLENOCH FLOWER D80^{SV}SIRE JK CATTLE CO QEDAR Q653^{SV}DAM GLENOCH-JK ANN K615^{SV}GLENOCH LAUROY L211^{SV}
GLENOCH-JK FLOWER N686[#]
GLENOCH FLOWER G113[#]TE MANIA INFINITY 04 379 AB[#]
GLENOCH-JK ANN F606^{SV}
GLENOCH ANN C102^{SV}

| STRUCTURE | | | | |
|-------------|---|---|---|---|
| CLAW | F | 7 | R | 6 |
| ANGLE | F | 6 | R | 7 |
| REAR LEG | S | 7 | H | 6 |
| TEMPERAMENT | 1 | | | |

Mid June 2023 TransTasman Angus Cattle Evaluation

| TACE | CED | CEM | GL | BW | 200 | 400 | 600 | MCW | MILK | DC | SS | DOC |
|------|------|-------|------|------|------|------|-------|----------|------------|-----------|-------|---------|
| EBV | +0.1 | -2.9 | -3.3 | +4.5 | +44 | +81 | +100 | +89 | +28 | -4.7 | +2.2 | +20 |
| RANK | 71% | 92% | 73% | 60% | 77% | 77% | 82% | 68% | 2% | 48% | 44% | 46% |
| ACC | 55% | 45% | 68% | 72% | 71% | 69% | 70% | 67% | 61% | 36% | 73% | 37% |
| | | | | | | | | | | | | |
| | CW | EMA | RIB | RUMP | RBV | IMF | NFI-F | CLAW SET | FOOT ANGLE | LEG ANGLE | \$ABI | \$ABI-L |
| EBV | +61 | +14.4 | -2.9 | -4.8 | +2.2 | +1.4 | 0.32 | +0.84 | +1.06 | +1.18 | \$186 | \$305 |
| RANK | 65% | 2% | 96% | 98% | 1% | 69% | 68% | 49% | 71% | 88% | 66% | 77% |
| ACC | 60% | 60% | 62% | 62% | 55% | 64% | 50% | 70% | 71% | 67% | | |

Traits Observed: CE,BWT,200WT,400WT(x2),SC,Scan(EMA,Rib,Rump,IMF),Structure(Claw Set x 1, Foot Angle x 1),Genomics

A great cow-line here, his mother K615 is the mother of Glenoch-JK Makahu M602.
His sire has bred cattle with big EMA, and this bull should be no different in passing this onto his progeny.

..... \$.....

52

JK CATTLE CO SHINGLE S709^{SV}

Angus

ID. QLL21S709 HBR DOB. 9/9/2021 AMFU,CAFU,DDFU,NHFU DAM DATA. 2 CALVES, 400 DAY ACI

SYDGEN EXCEED 3223^{PV}
SYDGEN ENHANCE^{SV}
SYDGEN RITA 2618[#]AYRVALE GENERAL G18^{PV}
GLENOCH-JK NEGOTIATE N612^{SV}
GLENOCH-JK BEAUTY J639[#]SIRE JK CATTLE CO QUALITATIVE Q623^{SV}DAM JK CATTLE CO WILCOOLA Q674[#]MATAURI REALITY 839[#]
GLENOCH-JK ANN N608[#]
GLENOCH-JK ANN J605^{SV}GLENOCH KALLANGUR K112^{PV}
GLENOCH-JK WILCOOLA N652[#]
GLENOCH-JK WILCOOLA J629^{SV}

| STRUCTURE | | | | |
|-------------|---|---|---|---|
| CLAW | F | 6 | R | 6 |
| ANGLE | F | 6 | R | 6 |
| REAR LEG | S | 7 | H | 6 |
| TEMPERAMENT | 1 | | | |

Mid June 2023 TransTasman Angus Cattle Evaluation

| TACE | CED | CEM | GL | BW | 200 | 400 | 600 | MCW | MILK | DC | SS | DOC |
|------|------|------|------|------|------|------|-------|----------|------------|-----------|-------|---------|
| EBV | +1.8 | -1.7 | -2.3 | +4.5 | +47 | +82 | +99 | +78 | +9 | -6.2 | +3.9 | +23 |
| RANK | 59% | 87% | 85% | 60% | 63% | 74% | 84% | 82% | 96% | 14% | 5% | 36% |
| ACC | 53% | 44% | 67% | 69% | 69% | 67% | 68% | 65% | 58% | 33% | 71% | 34% |
| | | | | | | | | | | | | |
| | CW | EMA | RIB | RUMP | RBV | IMF | NFI-F | CLAW SET | FOOT ANGLE | LEG ANGLE | \$ABI | \$ABI-L |
| EBV | +56 | +6.7 | +4.1 | +4.2 | -0.3 | +2.7 | 0.39 | +0.92 | +1.16 | +0.92 | \$210 | \$341 |
| RANK | 79% | 43% | 2% | 3% | 88% | 33% | 76% | 66% | 87% | 16% | 39% | 53% |
| ACC | 57% | 56% | 59% | 59% | 52% | 61% | 47% | 70% | 70% | 66% | | |

Traits Observed: CE,BWT,200WT,400WT(x2),SC,Scan(EMA,Rib,Rump,IMF),Structure(Claw Set x 1, Foot Angle x 1),Genomics

A nice long bull with an ideal head carriage, and nicely balanced across all traits. His pedigree contains some of our best cows from the Ann, Wilcoola and Beauty lines.

..... \$.....

53

JK CATTLE CO SANDMAN S639^{SV}

Angus

ID. QLL21S639 HBR DOB. 7/8/2021 AMFU,CAFU,DDFU,NHFU DAM DATA. 4 CALVES, 366 DAY ACI

CONNEALY IN SURE 8524[#]
G A R SURE FIRE^{SV}
CHAIR ROCK 5050 G A R 8086[#]TUWHARETOA REGENT D145^{PV}
GLENOCH LEONARDO L269^{PV}
GLENOCH FLOWER D80^{SV}SIRE G A R RELIANT^{PV}DAM GLENOCH-JK MOONGARRA N701^{SV}B/R DESTINATION 727-928[#]
G A R DESTINATION N244[#]
G A R PREDESTINED 3279[#]TE MANIA INFINITY 04 379 AB[#]
GLENOCH MOONGARRA G161[#]
GLENOCH MOONGARRA A154[#]

| STRUCTURE | | | | |
|-------------|---|---|---|---|
| CLAW | F | 6 | R | 5 |
| ANGLE | F | 6 | R | 6 |
| REAR LEG | S | 6 | H | 6 |
| TEMPERAMENT | 1 | | | |

Mid June 2023 TransTasman Angus Cattle Evaluation

| TACE | CED | CEM | GL | BW | 200 | 400 | 600 | MCW | MILK | DC | SS | DOC |
|------|------|-------|------|------|------|------|-------|----------|------------|-----------|-------|---------|
| EBV | -1.1 | -2.6 | -3.7 | +4.3 | +52 | +84 | +103 | +68 | +18 | -5.0 | +1.8 | +15 |
| RANK | 78% | 91% | 67% | 55% | 41% | 69% | 79% | 92% | 44% | 40% | 60% | 74% |
| ACC | 57% | 45% | 83% | 74% | 73% | 71% | 72% | 69% | 63% | 39% | 74% | 47% |
| | | | | | | | | | | | | |
| | CW | EMA | RIB | RUMP | RBV | IMF | NFI-F | CLAW SET | FOOT ANGLE | LEG ANGLE | \$ABI | \$ABI-L |
| EBV | +70 | +13.1 | -1.1 | -1.8 | +1.4 | +2.1 | -0.14 | +1.02 | +1.02 | +0.96 | \$228 | \$337 |
| RANK | 39% | 3% | 73% | 76% | 7% | 49% | 14% | 82% | 62% | 26% | 20% | 57% |
| ACC | 63% | 63% | 64% | 63% | 58% | 66% | 52% | 74% | 74% | 67% | | |

Traits Observed: GL,CE,BWT,200WT,400WT(x2),SC,Scan(EMA,Rib,Rump,IMF),Structure(Claw Set x 1, Foot Angle x 1),Genomics

S639 is a nicely balanced, moderate bull. He has an ideal head carriage, a big EMA and a balance of traits elsewhere. Check out his muscle pattern along his top, he will pass this onto his progeny. His mother is much the same, and is really proving herself for fertility.

..... \$.....

54 JK CATTLE CO SHOTGUN S727^{SV} *Angus*

ID. QLL21S727 HBR DOB. 8/10/2021 AMFU,CAFU,DDFU,NHFU DAM DATA. 4 CALVES, 377 DAY ACI

PATHFINDER GENESIS G357^{PV}
CHILTERN PARK NOAH N2^{PV}
CHILTERN PARK L18^{PV}

TUWHARETOA REGENT D145^{PV}
GLENOCH HINMAN H221^{SV}
GLENOCH FLOWER D80^{SV}

SIRE JK CATTLE CO QEDAR Q653^{SV}

DAM GLENOCH-JK FLOWER N654[#]

GLENOCH LAUROY L211^{SV}
GLENOCH-JK FLOWER N686[#]
GLENOCH FLOWER G113[#]

SUMMITCREST OUTLOOK[#]
GLENOCH FLOWER Y55[#]
GLENOCH MOONGARRA V52[#]

| STRUCTURE | | | | |
|-------------|---|---|---|---|
| CLAW | F | 7 | R | 6 |
| ANGLE | F | 6 | R | 6 |
| REAR LEG | S | 5 | H | 6 |
| TEMPERAMENT | 1 | | | |

Mid June 2023 TransTasman Angus Cattle Evaluation

| TACE | CED | CEM | GL | BW | 200 | 400 | 600 | MCW | MILK | DC | SS | DOC |
|------|------|------|------|------|-----|-----|-----|-----|------|------|------|-----|
| EBV | -3.9 | -2.1 | -2.1 | +6.6 | +51 | +83 | +99 | +88 | +17 | -5.4 | +1.9 | +20 |
| RANK | 89% | 89% | 87% | 92% | 46% | 71% | 84% | 69% | 50% | 29% | 56% | 46% |
| ACC | 53% | 41% | 67% | 70% | 71% | 69% | 70% | 67% | 60% | 35% | 66% | 30% |

| | CW | EMA | RIB | RUMP | RBV | IMF | NFI-F | CLAW SET | FOOT ANGLE | LEG ANGLE | \$ABI | \$ABI-L |
|------|-----|------|------|------|------|------|-------|----------|------------|-----------|-------|---------|
| EBV | +60 | +9.0 | -2.2 | -3.4 | +1.6 | +1.0 | -0.29 | +0.54 | +0.64 | +0.64 | \$186 | \$299 |
| RANK | 69% | 20% | 90% | 92% | 4% | 80% | 6% | 5% | 2% | 1% | 66% | 80% |
| ACC | 60% | 58% | 61% | 61% | 54% | 63% | 49% | 66% | 61% | 57% | | |

Traits Observed: CE,BWT,200WT,400WT(x2),SC,Scan(EMA,Rib,Rump,IMF),Structure(Clau Set x 1, Foot Angle x 1),Genomics

A balanced, big topped bull. He's not the biggest, but he's tidy and well made, and goes back to one of the best cows in Y55.

55 JK CATTLE CO SERGEANT S677^{SV} *Angus*

ID. QLL21S677 HBR DOB. 25/8/2021 AMFU,CAFU,DDFU,NHFU DAM DATA. 3 CALVES, 374 DAY ACI

S A V HERITAGE 6295[#]
S A V HARVESTOR 0338[#]
S A V EMBLYNETTE 7749[#]

MATAURI REALITY 839[#]
GLENOCH-JK MAKAHU M602^{SV}
GLENOCH-JK ANN K615^{SV}

SIRE SUGARLOAF HARVESTOR N174^{SV}

DAM GLENOCH-JK FLOWER P667[#]

SYDGEN C C & 7[#]
SUGARLOAF CLEO J15^{SV}
SUGARLOAF CLEO D84^{PV}

GLENOCH HARLIN H304^{SV}
GLENOCH-JK FLOWER K647[#]
GLENOCH-JK FLOWER E77[#]

| STRUCTURE | | | | |
|-------------|---|---|---|---|
| CLAW | F | 6 | R | 6 |
| ANGLE | F | 6 | R | 6 |
| REAR LEG | S | 7 | H | 6 |
| TEMPERAMENT | 1 | | | |

Mid June 2023 TransTasman Angus Cattle Evaluation

| TACE | CED | CEM | GL | BW | 200 | 400 | 600 | MCW | MILK | DC | SS | DOC |
|------|------|------|------|------|-----|------|------|------|------|------|------|-----|
| EBV | -7.6 | -1.6 | -0.6 | +8.8 | +58 | +104 | +139 | +140 | +18 | -5.9 | +3.3 | +22 |
| RANK | 96% | 87% | 96% | 99% | 16% | 15% | 11% | 5% | 40% | 19% | 12% | 38% |
| ACC | 55% | 43% | 69% | 72% | 72% | 70% | 71% | 67% | 60% | 33% | 73% | 35% |

| | CW | EMA | RIB | RUMP | RBV | IMF | NFI-F | CLAW SET | FOOT ANGLE | LEG ANGLE | \$ABI | \$ABI-L |
|------|-----|------|------|------|------|------|-------|----------|------------|-----------|-------|---------|
| EBV | +78 | +7.3 | -2.8 | -3.6 | +1.4 | +0.6 | 0.27 | +0.64 | +0.86 | +0.84 | \$176 | \$327 |
| RANK | 18% | 36% | 95% | 94% | 7% | 88% | 62% | 13% | 23% | 5% | 75% | 64% |
| ACC | 60% | 58% | 61% | 61% | 54% | 62% | 48% | 72% | 72% | 67% | | |

Traits Observed: CE,200WT,400WT(x2),SC,Scan(EMA,Rib,Rump,IMF),Structure(Clau Set x 1, Foot Angle x 1),Genomics

Plenty of length and muscle expression to this bull, he shows very similar characteristics to his sire. Great cow-line, going back to one of our most influential cows, Y55 as the dam of E77.

56 JK CATTLE CO SCRIPTURE S661^{SV} *Angus*

ID. QLL21S661 HBR DOB. 13/8/2021 AMFU,CAFU,DDFU,NHFU DAM DATA. 7 CALVES, 362 DAY ACI

G A R EARLY BIRD[#]
G A R ASHLAND^{PV}
CHAIR ROCK AMBUSH 1018[#]

BOOROOMOOKA UNDERTAKEN Y145^{PV}
RENNYLEA EDMUND E11^{PV}
LAWSON'S HENRY VIII Y5^{SV}

SIRE G A R HOME TOWN^{PV}

DAM GLENOCH-JK BARA K611[#]

G A R SURE FIRE^{SV}
CHAIR ROCK SURE FIRE 6095[#]
CHAIR ROCK PROGRESS 3005[#]

ARDROSSAN EQUATOR A241^{PV}
GLENOCH-JK BARA H604[#]
K-BAR BARA A2[#]

| STRUCTURE | | | | |
|-------------|---|---|---|---|
| CLAW | F | 7 | R | 6 |
| ANGLE | F | 6 | R | 7 |
| REAR LEG | S | 7 | H | 6 |
| TEMPERAMENT | 1 | | | |

Mid June 2023 TransTasman Angus Cattle Evaluation

| TACE | CED | CEM | GL | BW | 200 | 400 | 600 | MCW | MILK | DC | SS | DOC |
|------|------|------|------|------|-----|-----|------|------|------|------|------|-----|
| EBV | -4.0 | -1.6 | -0.6 | +7.1 | +59 | +99 | +126 | +106 | +14 | -6.3 | +3.2 | +24 |
| RANK | 90% | 87% | 96% | 96% | 14% | 24% | 31% | 40% | 78% | 12% | 14% | 30% |
| ACC | 61% | 50% | 84% | 75% | 75% | 73% | 74% | 71% | 66% | 42% | 75% | 56% |

| | CW | EMA | RIB | RUMP | RBV | IMF | NFI-F | CLAW SET | FOOT ANGLE | LEG ANGLE | \$ABI | \$ABI-L |
|------|-----|------|------|------|------|------|-------|----------|------------|-----------|-------|---------|
| EBV | +85 | +7.2 | -4.7 | -6.0 | +1.2 | +3.6 | 0.08 | +0.64 | +0.98 | +1.00 | \$227 | \$365 |
| RANK | 8% | 37% | 99% | 99% | 11% | 15% | 37% | 13% | 52% | 38% | 21% | 34% |
| ACC | 65% | 65% | 66% | 66% | 61% | 68% | 54% | 74% | 75% | 69% | | |

Traits Observed: GL,CE,BWT,200WT,400WT(x2),SC,Scan(EMA,Rib,Rump,IMF),Structure(Clau Set x 1, Foot Angle x 1),Genomics

A nice long bull to finish the sale, with fast growth, big EMA, high IMF and a balance of traits elsewhere. Proven fertility in his cow-line.

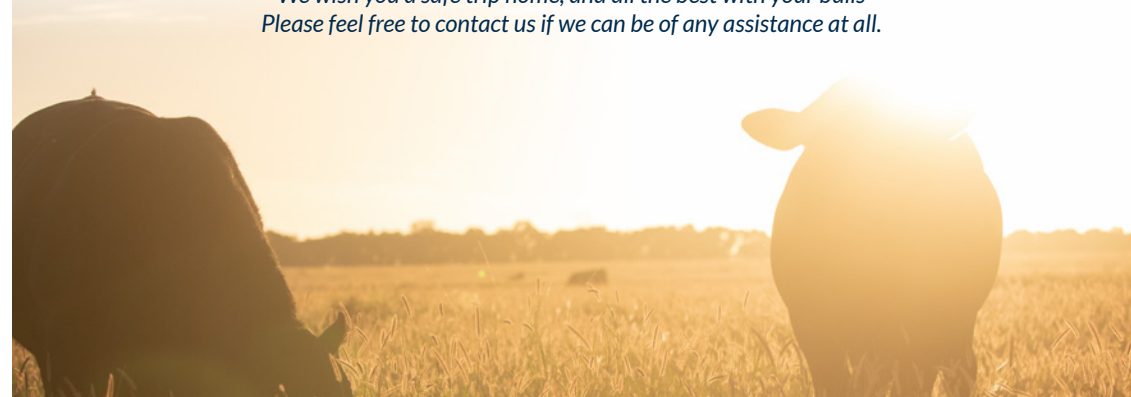
Sale Results

| ANGUS | |
|-----------|--|
| CLEARANCE | |
| AVERAGE | |
| TOP PRICE | |

| BRANGUS | |
|-----------|--|
| CLEARANCE | |
| AVERAGE | |
| TOP PRICE | |

| OVERALL | |
|-----------|--|
| CLEARANCE | |
| AVERAGE | |
| TOP PRICE | |

A big thank you to everyone for joining us at our bull sale, we are very appreciative of your support of our program. We wish you a safe trip home, and all the best with your bulls. Please feel free to contact us if we can be of any assistance at all.



Recessive Genetic Conditions



This is information for bull buyers about the recessive genetic conditions in the Angus breed, Arthrogryposis Multiplex (AM), Hydrocephalus (NH), Contractural Arachnodactyly (CA) & Developmental Duplications (DD).

Putting undesirable Genetic Recessive Conditions in perspective

All animals, including humans, carry single copies (alleles) of undesirable or "broken" genes. In single copy form, these undesirable alleles usually cause no harm to the individual.

But when animals carry two copies of certain undesirable or "broken" alleles it often results in bad consequences. Advances in genomics have facilitated the development of accurate diagnostic tests to enable the identification and management of numerous undesirable or "broken" genes.

Angus Australia is proactive in providing its members and their clients with relevant tools and information to assist them in the management of known undesirable genes and our members are leading the industry in their use of this technology.

What are AM, NH, CA and DD?

AM, NH, CA and DD are all recessive conditions caused by "broken" alleles within the DNA of individual animals. When a calf inherits two copies of the AM or NH alleles their development is so adversely affected that they will be still-born.

In other cases, such as CA and DD, calves carrying two copies of the broken allele may reach full-term. In such cases the animal may either appear relatively normal, or show physical symptoms that affect their health and/or performance.

How are the conditions inherited?

Research in the U.S. and Australia indicates that AM, NH, CA and DD are simply inherited recessive conditions. This means that a single gene (or pair of alleles) controls the condition.

For this mode of inheritance two copies of the undesirable allele need to be present before the condition is seen; in which case you may get an abnormal calf. A more common example of a trait with a simple recessive pattern of inheritance is black and red coat colour.

Animals with only one copy of the undesirable allele (and one copy of the normal form of the allele) appear normal and are known as "carriers".

What happens when carriers are mated to other animals?

Carriers, will on average, pass the undesirable allele to a random half (50 %) of their progeny.

When a carrier bull and carrier cow is mated, there is a 25% chance that the resultant calf will inherit two normal alleles, a 50% chance that the mating will result in a carrier

(i.e. with just one copy of the undesirable allele), and a 25% chance that the calf will inherit two copies of the undesirable gene.

If animals tested free of the undesirable gene are mated to carrier animals the condition will not be expressed at all. All calves will appear normal, but approximately half (50%) could be expected to be carriers.

How is the genetic status of animals reported?

DNA-based diagnostic tests have been developed which can be used to determine whether an individual animal is either a carrier or free of the alleles resulting in AM, NH, CA or DD.

Angus Australia uses advanced software to calculate the probability of (untested) animals to being carriers of AM, NH, CA or DD. The software uses the test results of any relatives in the calculations and the probabilities may change as new results for additional animals become available.

The genetic status of animals is being reported using five categories:

| AMF | TESTED AM FREE |
|------|--|
| AMFU | BASED ON PEDIGREE AM FREE - ANIMAL HAS NOT BEEN TESTED |
| AM_% | % PROBABILITY THE ANIMAL IS AN AM CARRIER |
| AMC | TESTED AM-CARRIER |
| AMA | AM-AFFECTED |

For NH, CA and DD, simply replace AM in the table with NH, CA or DD.

Registration certificates and the Angus Australia web database display these codes. This information is displayed on the animal details page and can be accessed by conducting an "Database Search" from the Angus Australia website or looking up individual animals listed in a sale catalogue.

Implications for Commercial Producers

Your decision on the importance of the genetic condition status of replacement bulls should depend on the genetics of your cow herd (which bulls you previously used) and whether some female progeny will be retained or sold as breeders.

Most Angus breeders are proactive and transparent in managing known genetic conditions, endeavouring to provide the best information available. The greatest risk to the commercial sector from undesirable genetic recessive conditions comes from unregistered bulls with an unknown genetic background. The genetic condition testing that Angus Australia seedstock producers are investing in provides buyers of registered Angus bulls with unmatched quality assurance.

For further information, contact Angus Australia's Breed Development & Extension Manager on (02) 6773 4618.



G A R HOME TOWN



G A R RELIANT



SUGARLOAF HARVESTOR N174



GLENOCH KALLANGUR K112



JK CATTLE CO QUAKER Q615



Pictured at nine years of age

GLENOCH HINMAN H221



BELVIEW POSIEDON P052 (P)



BIMBADEEN Q PICUS P108 (P)

G A R HOME TOWN^{PV}

Angus Reference Sire

ID. USA19266718 HBR DOB. 6/9/2018 AMF,CAF,DDF,NHF,DWF,MAF,MHF,OHF,OSF,RGF

G A R DAYLIGHT*
G A R EARLY BIRD*
G A R PROGRESS 830*

CONNEALY IN SURE 8524*
G A R SURE FIRE^{SV}
CHAIR ROCK 5050 G A R 8086*

SIRE G A R ASHLAND^{PV}

DAM CHAIR ROCK SURE FIRE 6095*

B/R AMBUSH 28*
CHAIR ROCK AMBUSH 1018*
G A R YIELD GRADE N366*

G A R PROGRESS^{SV}
CHAIR ROCK PROGRESS 3005*
CHAIR ROCK 5050 G A R 9057*

5 SONS

LOTS:
10, 11, 12, 13, 56

Mid June 2023 TransTasman Angus Cattle Evaluation

| TACE | CED | CEM | GL | BW | 200 | 400 | 600 | MCW | MILK | DC | SS | DOC |
|------|------|-------|------|------|------|------|-------|----------|------------|-----------|-------|---------|
| EBV | +6.8 | +5.6 | -6.7 | +2.3 | +58 | +101 | +119 | +78 | +15 | -4.8 | +1.5 | +24 |
| RANK | 17% | 23% | 21% | 16% | 16% | 20% | 46% | 82% | 64% | 45% | 72% | 31% |
| ACC | 81% | 60% | 99% | 99% | 98% | 98% | 97% | 90% | 83% | 51% | 97% | 94% |
| | CW | EMA | RIB | RUMP | RBV | IMF | NFI-F | CLAW SET | FOOT ANGLE | LEG ANGLE | \$ABI | \$ABI-L |
| EBV | +73 | +14.3 | -2.8 | -4.9 | +1.1 | +5.0 | +0.11 | +1.26 | +0.94 | +0.78 | \$285 | \$434 |
| RANK | 31% | 2% | 95% | 98% | 14% | 3% | 40% | 99% | 42% | 2% | 1% | 3% |
| ACC | 87% | 89% | 87% | 85% | 81% | 89% | 65% | 99% | 99% | 89% | | |

Traits Observed: Genomics Number of Herds: 44, Prog Analysed: 1797, Genomic Prog: 768

One of the hottest bulls out of the Gardiner program – we used Home Town for his calving ease, fast growth, moderate MCW, big EMA and IMF, and balance of other traits.

G A R RELIANT^{PV}

Angus Reference Sire

ID. USA18669357 HBR DOB. 19/8/2016 AMF,CAF,DDF,NHF,MAF,OHF,OSF

MYTTY IN FOCUS*
CONNEALY IN SURE 8524*
ENTREENA OF CONANGA 657*

B/R DESTINATION 727*
B/R DESTINATION 727-928*
B/R BLACKCAP EMPRESS 558*

SIRE G A R SURE FIRE^{SV}

DAM G A R DESTINATION N244*

G A R NEW DESIGN 5050*
CHAIR ROCK 5050 G A R 8086*
CHAIR ROCK GRID MAKER 2107*

G A R PREDESTINED*
G A R PREDESTINED 3279*
G A R OBJECTIVE N906*

5 SONS

LOTS:
1, 36, 37, 49, 53

Mid June 2023 TransTasman Angus Cattle Evaluation

| TACE | CED | CEM | GL | BW | 200 | 400 | 600 | MCW | MILK | DC | SS | DOC |
|------|------|------|------|------|------|------|-------|----------|------------|-----------|-------|---------|
| EBV | +0.5 | -2.1 | -3.8 | +4.5 | +60 | +109 | +137 | +105 | +24 | -4.6 | +2.1 | +16 |
| RANK | 68% | 89% | 66% | 60% | 11% | 8% | 14% | 40% | 7% | 51% | 48% | 70% |
| ACC | 77% | 60% | 98% | 98% | 96% | 96% | 95% | 88% | 79% | 55% | 94% | 84% |
| | CW | EMA | RIB | RUMP | RBV | IMF | NFI-F | CLAW SET | FOOT ANGLE | LEG ANGLE | \$ABI | \$ABI-L |
| EBV | +86 | +8.7 | -3.3 | -4.9 | +0.9 | +3.2 | -0.75 | +1.22 | +1.10 | +1.04 | \$236 | \$381 |
| RANK | 7% | 22% | 98% | 98% | 23% | 22% | 1% | 97% | 78% | 52% | 14% | 22% |
| ACC | 85% | 86% | 84% | 82% | 79% | 86% | 65% | 93% | 93% | 75% | | |

Traits Observed: Genomics Number of Herds: 34, Prog Analysed: 508, Genomic Prog: 155

Reliant was chosen for his big capacity, top 1% NFI, fast growth, combination of carcase traits, and balance across all other traits.

SUGARLOAF HARVESTOR N174^{SV}

Angus Reference Sire

ID. DFTN174 HBR DOB. 16/7/2017 AMFU,CAFU,DDFU,NHFU

CAR DUKE 104*
S A V HERITAGE 6295*
S A V BLACKCAP MAY 4136*

S A F CONNECTION*
SYDGEN C C & 7*
SYDGEN FOREVER LADY 4087*

SIRE S A V HARVESTOR 0338*

DAM SUGARLOAF CLEO J15^{SV}

S A V NET WORTH 4200*
S A V EMBLYNETTE 7749*
SAV EMBLYNETTE DIAMOND 6377*

SITZ TRADITION RLS 8702^{SV}
SUGARLOAF CLEO D84^{PV}
NOONEE CLEO U38*

11 SONS

LOTS: 2, 3, 5, 6, 8, 14,
30, 31, 34, 48, 55

Mid June 2023 TransTasman Angus Cattle Evaluation

| TACE | CED | CEM | GL | BW | 200 | 400 | 600 | MCW | MILK | DC | SS | DOC |
|------|------|------|------|------|------|------|-------|----------|------------|-----------|-------|---------|
| EBV | -5.6 | -0.9 | -1.6 | +7.7 | +59 | +105 | +136 | +120 | +18 | -6.4 | +2.6 | +20 |
| RANK | 93% | 83% | 90% | 98% | 13% | 13% | 15% | 20% | 39% | 11% | 29% | 48% |
| ACC | 69% | 53% | 83% | 93% | 91% | 90% | 89% | 82% | 73% | 44% | 87% | 46% |
| | CW | EMA | RIB | RUMP | RBV | IMF | NFI-F | CLAW SET | FOOT ANGLE | LEG ANGLE | \$ABI | \$ABI-L |
| EBV | +76 | +6.1 | -2.4 | -2.3 | +1.3 | +0.2 | -0.39 | +0.90 | +0.98 | +0.86 | \$203 | \$349 |
| RANK | 22% | 51% | 92% | 82% | 9% | 93% | 3% | 62% | 52% | 7% | 47% | 47% |
| ACC | 76% | 75% | 76% | 76% | 70% | 75% | 56% | 85% | 86% | 79% | | |

Traits Observed: GL,BWT,200WT,400WT,Genomics Number of Herds: 1, Prog Analysed: 75, Genomic Prog: 37

Harvestor is an impressive, quality bull with real sire appeal. He ticked many boxes for us when we purchased him in 2019 for \$44,000, the 10th highest selling Angus bull in Australia that year. Harvestor offers plenty of length, and genuine muscle expression. He is exceptionally quiet and sound in his structure, and these traits are clearly evident in his progeny. We've never witnessed him with a lazy prepuce, which is a trait that is often overlooked and can contribute to bull breakdown.

GLENOCH KALLANGUR K112^{PV}

Angus Reference Sire

ID. QBGK112 HBR DOB. 25/8/2014 AMFU,CAFU,DDFU,NHFU

PAPA POWER 096*
PAPA EQUATOR 2928*
PAPA ENVIOUS BLACKBIRD 8849*

TE MANIA AMBASSADOR A134^{SV}
TUWHARETOA REGENT D145^{PV}
LAWSON'S HENRY VIII Y5^{SV}

SIRE ARDROSSAN EQUATOR A241^{PV}

DAM GLENOCH FLOWER G72^{SV}

B/R NEW DIMENSION 7127^{SV}
ARDROSSAN PRINCESS W38^{PV}
ARDROSSAN PRINCESS U24*

GLENOCH ZAMBANI Z163^{SV}
GLENOCH FLOWER B133*
GLENOCH FLOWER Q17+95*

3 SONS

LOTS: 7, 20, 23

5 GRANDSONS

LOTS:
6, 13, 19, 35, 50

Mid June 2023 TransTasman Angus Cattle Evaluation

| TACE | CED | CEM | GL | BW | 200 | 400 | 600 | MCW | MILK | DC | SS | DOC |
|------|------|-------|------|------|------|------|-------|----------|------------|-----------|-------|---------|
| EBV | -6.1 | -2.3 | -4.0 | +6.9 | +56 | +98 | +126 | +103 | +16 | -7.4 | +2.0 | +19 |
| RANK | 94% | 90% | 62% | 94% | 22% | 27% | 31% | 45% | 58% | 3% | 52% | 54% |
| ACC | 77% | 67% | 93% | 95% | 94% | 94% | 94% | 87% | 85% | 61% | 91% | 80% |
| | CW | EMA | RIB | RUMP | RBV | IMF | NFI-F | CLAW SET | FOOT ANGLE | LEG ANGLE | \$ABI | \$ABI-L |
| EBV | +93 | +12.4 | +1.2 | +3.5 | +0.6 | +2.2 | +0.49 | +0.74 | +0.76 | +0.68 | \$246 | \$385 |
| RANK | 3% | 4% | 22% | 5% | 40% | 46% | 84% | 28% | 9% | 1% | 8% | 20% |
| ACC | 89% | 88% | 87% | 88% | 81% | 89% | 81% | 91% | 91% | 88% | | |

Traits Observed: GL,BWT,200WT,400WT,600WT(x2),SC,Scan(EMA,Rib,IMF),Genomics Number of Herds: 5, Prog Analysed: 141, Genomic Prog: 75

We purchased K112 in 2016 when we were looking for a bull that would offer high fertility traits, muscle expression and softness. He is a bull that improves every cow he's joined to. His sons are super consistent, with soundness, shape and softness. His daughters are very maternal looking, good-bodied females and continue to be a strong platform for our breeding herd. K112 has fantastic feet structure, with little to no claw curl in all four feet, and plenty of heel. He steps correctly and is very quiet like a lot of A241 progeny. It's his cow-line that makes K112 extra special, with so many cows that are not only highly proven for fertility, but that have bred on to produce great ones. K112 has been a sire of influence and consistency in our herd for seven joining seasons. He was part of Cohort 10 of the Angus Sire Benchmarking Program to further improve the accuracy of his EBVs.

Angus Reference Sire

LT 598 BANDO 9074#
GLENOCH FLOWER B154#
GLENOCH FLOWER X124#

| |
|-------------------------------|
| 3 SONS |
| LOTS: 24, 28, 32 |
| 6 GRANDSONS |
| LOTS: 4, 5, 25, 43, 51, 54 |

| TACE | CED | CEM | GL | BW | 200 | 400 | 600 | MCW | MILK | DC | SS | DOC |
|------|------|------|------|------|------|------|-------|----------|------------|-----------|-------|---------|
| EBV | +5.4 | -2.6 | -3.4 | +3.0 | +53 | +91 | +124 | +114 | +22 | -3.6 | +1.0 | +16 |
| RANK | 28% | 91% | 72% | 27% | 37% | 48% | 34% | 27% | 15% | 78% | 86% | 68% |
| ACC | 82% | 71% | 97% | 97% | 96% | 96% | 96% | 91% | 91% | 67% | 95% | 82% |
| | CW | EMA | RIB | RUMP | RBY | IMF | NFI-F | CLAW SET | FOOT ANGLE | LEG ANGLE | \$ABI | \$ABI-L |
| EBV | +84 | +6.0 | -2.6 | -5.2 | +0.6 | +5.2 | -0.42 | +0.88 | +0.80 | +1.04 | \$205 | \$351 |
| RANK | 9% | 52% | 94% | 99% | 40% | 3% | 3% | 58% | 13% | 52% | 45% | 45% |
| ACC | 91% | 90% | 90% | 90% | 86% | 91% | 82% | 88% | 88% | 84% | | |

Number of Herds: 13, Prog Analysed: 228, Genomic Prog: 70

Angus Reference Sire

HA PROGRAM 5652#
GLENOCH FLOWER D80^{SV}
GLENOCH FLOWER B154#

3 SONS

LOTS: 4, 25, 43

| TACE | CED | CEM | GL | BW | 200 | 400 | 600 | MCW | MILK | DC | SS | DOC |
|------|------|------|------|------|------|------|-------|----------|-----------|-----------|-------|---------|
| EBV | +6.7 | -1.5 | -2.9 | +2.3 | +47 | +82 | +114 | +79 | +28 | -2.3 | +0.6 | +18 |
| RANK | 18% | 86% | 78% | 16% | 64% | 73% | 58% | 82% | 2% | 94% | 93% | 61% |
| ACC | 64% | 53% | 84% | 81% | 79% | 79% | 78% | 74% | 68% | 47% | 80% | 50% |
| | CW | EMA | RIB | RUMP | RBY | IMF | NFI-F | CLAW SET | FOOTANGLE | LEG ANGLE | \$ABI | \$ABI-L |
| EBV | +73 | +5.5 | -1.6 | -4.3 | +1.0 | +4.1 | -0.35 | +1.12 | +1.08 | +1.12 | \$199 | \$315 |
| RANK | 29% | 59% | 82% | 97% | 18% | 9% | 4% | 92% | 74% | 76% | 52% | 71% |
| ACC | 70% | 68% | 70% | 70% | 65% | 71% | 59% | 76% | 76% | 71% | | |

There are a lot of similarities between Q615 and his sire, Hinman. His mother K609 was wedge shaped, feminine through the shoulders and neck, with length in a moderate frame. She had 6 calves for a 375 day ACI, and her mother H631 had 9 calves for a 365 day ACI. They descend back to popular Ardrossan donor cow, Q17.

Brangus Reference Sire

FLORABUNDA 165 (P)
BELVIEW CAITRINA (P)
BELVIEW YAFFA (P)

11 SONS

LOTS:
15, 16, 19, 21, 22,
26, 40, 41, 42, 45, 46

| | GL | BW | 200 | 400 | 600 | MCW | MILK | SS |
|------|------|------|------|------|------|------|-------|-------|
| EBV | -1.6 | -0.1 | +6 | +21 | +25 | +13 | 0 | +1.5 |
| RANK | 10% | 60% | 70% | 45% | 35% | 65% | 15% | 20% |
| ACC | 53% | 84% | 87% | 87% | 84% | 67% | 45% | 81% |
| | CW | EMA | RIB | RUMP | RBY | IMF | \$EXP | \$DOM |
| EBV | +12 | +3.2 | +0.4 | +0.5 | +1.2 | -0.1 | \$26 | \$28 |
| RANK | 50% | 5% | 30% | 30% | 5% | 95% | 25% | 25% |
| ACC | 72% | 58% | 71% | 71% | 60% | 62% | | |

Traits Observed: Number of Herds: 2, Progeny Analysed: 93, Scan Progeny: 48

We inspected P052 with his contemporaries at 18 months old – he was the clear stand out. We leased him for a season and Belview have retained him as a sire. A cracking bull who is sure to continue making his mark in the breed.

Brangus Reference Sire

BRINKS BRIGHT SIDE 607L11 (P) (E)
TELPARA HILLS MISS L11 820D4 (P) (ET)
CENTER MS BEST BET 820/R42 (S)

5 SONS

LOTS:
17, 18, 29, 39, 44

| | GL | BW | 200 | 400 | 600 | MCW | MILK | SS |
|------|------|------|------|------|------|-----|-------|-------|
| EBV | -1.0 | -0.5 | +9 | +12 | +15 | +10 | -1 | +0.1 |
| RANK | 35% | 45% | 55% | 75% | 60% | 10% | 30% | 65% |
| ACC | 55% | 93% | 90% | 87% | 84% | 69% | 59% | 83% |
| | CW | EMA | RIB | RUMP | RBY | IMF | \$EXP | \$DOM |
| EBV | +10 | +1.5 | -0.6 | -0.7 | +1.1 | 0.0 | \$15 | \$16 |
| RANK | 60% | 35% | 90% | 90% | 5% | 90% | 65% | 65% |
| ACC | 74% | 58% | 69% | 69% | 59% | 61% | | |

Traits Observed: 200WT,400WT,600WT,SS,FAT,EMA,IMF Number of Herds: Number of Herds: 1, Progeny Analysed: 114, Scan Progeny: 43, Number of Dtrs: 7

Picus has crossed so well over F707 and Lamont daughters, adding softness without losing the muscle expression. He is a very balanced bull, very good footed and quiet. He's a goer in the paddock and doesn't mind trying to find a few more cows.

Bringing Your New Bull Home

When purchasing a bull, care and handling after the sale can be as important as the purchase itself. Looking after your bull well during the initial stages of his working life can contribute to longevity and success within your breeding herd.

RECEIVING/SETTLING IN

A bull leaving our herd is leaving the security of a large mob of mates and will arrive in a strange environment at your property. The truck ride to your property can sometimes be a little distressing, especially if he is on his own.

Unload him and make sure he has a cow or a steer as company straight away, in a secure yard with hay and water. Avoid the use of buzzers or dogs during this arrival time.

A two-year-old bull can move in with older bulls and settle in quite well but remember that, being the youngest, he will get the last of any supplementary feed if available, because of the dominance of older bulls. The paddock is best to be of reasonable area to allow him to keep away from the others.

HANDLING

Respect your bulls and handle them quietly, allow them to walk rather than rushing. Treat them with care, and in a gentle but firm manner. Our bulls are handled on horses, quad bikes, side-by-sides, and with dogs. They have respect for fences, including electric fences.

ANIMAL HEALTH

All of our calves are vaccinated twice with 7-in-1 and then receive a booster prior to the sale. They are also vaccinated for vibrio and 3-day sickness.

We suggest that they be given a booster for these each year.

Vibriosis, a sexually transmitted disease, causes infertility and abortions, and is most commonly introduced to a clean herd by an infected bull. These bulls show no signs of the illness. Vaccinated bulls are free from vibriosis, so vaccinating bulls against the disease should be a routine practice. Complete the vaccinations ideally six weeks before joining.

MATING

Most well grown Angus bulls will handle up to 50 females in a joining season but this will depend upon the environmental conditions and management. We have had reports of our bulls handling considerably more.

If you multiple join bulls it is best not to initially mix young bulls with older bulls as they will be socially dominated, and at risk of injury, thereby reducing their contribution to your calf crop.

For the yearling bulls, we recommend that they can be joined with up to 30-40 cows in October or November, ideally once they are around 500kg.

BULL MANAGEMENT & MAINTENANCE CHECKS

Your new bull is an investment in the future of your business. Access to adequate nutrition will allow your bull to continue to grow, develop, and perform. Regular observation of your bulls during the joining season can be of advantage in early identification of injury.

If a bull does not behave in a normal manner serving, he must be replaced immediately and checked out. Should a cow have been served prior to an observer arriving, the bull may not repeat the performance with her. This is no call for alarm as some bulls will move off and seek another active female after serving a cow.

Get up close to them and watch each bull walk; check for swellings around the sheath and for lameness. If a penile infection is treated in the early stages, your bull's future can be restored and he can be back on the job. This will not apply to a broken penis but a lot of suspected broken penis injuries are just an infection unnoticed.

If you are single-sire joining, rotate bulls to make sure that any bull infertility is covered. Single-sire joining works well but it has risks. The bulls must be checked regularly and carefully, or the bulls should be rotated every one or two cycles.

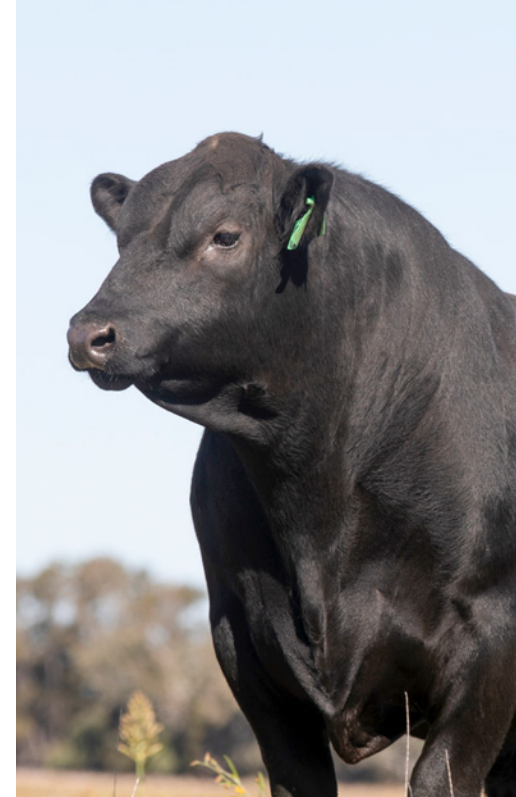
BETWEEN SEASONS

After the joining season, attend to his health requirements and put him away in a soundly fenced paddock with enough food to keep him in good order. Adequate food will eliminate some of the fighting, thereby reducing the risk of injury. After his first season, your bull will need to be conditioned up prior to the next joining.

Always handle your bulls with respect and kindness. Every attempt is made to ensure that no stock with bad dispositions are retained here in our breeding herd, and this group of sale bulls scored exceptionally well for temperament. With sensible handling our bulls will have a respectful attitude towards humans.

Bulls are a large investment for breeding herds and they have a major effect on herd fertility. A little time and attention to make sure they are fit, free from disease and actively working is well worthwhile.

If you have any queries about bull management, please don't hesitate to contact us.



Disclaimer & Privacy Information

Attention Buyer

Animal details included in this catalogue, including but not limited to pedigree, DNA information, Estimated Breeding Values (EBVs) and Index values, are based on information provided by the breeder or owner of the animal. Whilst all reasonable care has been taken to ensure that the information provided in this catalogue was correct at the time of publication, Angus Australia will assume no responsibility for the accuracy or completeness of the information, nor for the outcome (including consequential loss) of any action taken based on this information.

Parent Verification Suffixes

The animals listed within this catalogue including its pedigree, are displaying a Parent Verification Suffix which indicates the DNA parent verification status that has been conducted on the animal. The Parent Verification Suffixes that will appear at the end of each animal's name.

The suffix displayed at the end of each animal's name indicates the DNA parentage verification that has been conducted by Angus Australia.

- PV:** both parents have been verified by DNA. **SV:** the sire has been verified by DNA.
DV: the dam has been verified by DNA. **#:** DNA verification has not been conducted.
E: DNA verification has identified that the sire and/or dam may possibly be incorrect, but this cannot be confirmed conclusively.

DISCLAIMER: All reasonable care has been taken by the vendor to ensure that the information provided in this catalogue is correct at the time of publication. However, neither the vendor nor the selling agents make any representations for the accuracy, reliability or completeness of any information provided in this catalogue and do not assume any responsibility for the use or interpretation of the information included in this catalogue. You are encouraged to seek independent verification of any information contained in this catalogue before relying on such information.

Privacy Information

In order for Angus Australia to process the transfer of a registered animal in this catalogue, the vendor will need to provide certain information to Angus Australia and the buyer consents to the collection and disclosure of that information by Angus Australia in certain circumstances. If the buyer does not wish for his or her information to be stored and disclosed by Angus Australia, the buyer must complete the form included below and forward it to Angus Australia. If the form is not completed, the buyer will be taken to have consented to the disclosure of such information.

BUYERS OPTION TO OPT OUT OF DISCLOSING PERSONAL INFORMATION TO ANGUS AUSTRALIA

If you do not complete this form, you will be taken to have consented to Angus Australia using your name, address and phone number for the purposes of effecting a change of registration of the animal(s) that you have purchased, maintaining its database and disclosing that information to its members on its website.

I, the buyer of animals with the following ids.....
.....

from member.....(name) do not consent to Angus Australia using my name, address and phone number for the purposes of effecting a change of registration of the animals I have mentioned above that I have purchased, maintaining its database and disclosing that information to its members on its website.

Name: Signature:

Date:

Sale Day 2022

Images: Kent Ward - KB Consulting
and Jessica Courtne Photography



Notes



"Sunrise at Camilaroi West"

Photography by Kent Ward, KB Consulting | Catalogue by Kate Boshammer, Kabosh Creative

